

# MELBOURNE CUSTOM HOMES

2013-2014



See inside homes by some of Victoria's most awarded builders  
Award winning pools and landscape design  
Luxury products and stylish finishes



**HERMITAGE**BESPOKE

*tailor made homes*



PHONE: **03 9535 0513**

SUITE 15 • 622 FERN TREE GULLY ROAD

MULGRAVE • VICTORIA 3170

**HERMITAGE**BESPOKE.COM.AU

# The Range



Real Flame are the industry leaders in fireplace design and manufacture. Conceived, designed, researched, developed and built in Australia. All of our products have been meticulously finished using only the highest quality materials, with style ranging from classic to contemporary. We have a fireplace that will add value, warmth and ambience to any home.

**Head Office**  
1340 Ferntree Gully  
Road Scoresby  
T 03 8706 2000  
F 03 8706 2001

**Richmond VIC**  
300 Swan Street  
T 03 9428 4443  
F 03 9428 4445

**Geelong VIC**  
2a Gordon Avenue  
T 03 5229 0844

**Chatswood NSW**  
654 Pacific Highway  
T 02 8905 0189

**Miranda NSW**  
36 Kareena Road  
T 02 8513 6202

**Dandenong VIC**  
9 Lonsdale Street  
T 03 9791 9285

**Norwood SA**  
173 Magill Road  
T 08 8132 0371

**Milton QLD**  
46 Douglas Street  
T 07 3368 2011

**Osborne Park WA**  
47-53 McDonald Steet East  
T 08 9444 9900

**Fyshwick ACT**  
88 Wollongong Street  
T 02 6280 5522



[www.realflame.com.au](http://www.realflame.com.au)

**real flame**  
the hearth of australia

**Leaders in  
Gas Fireplace  
Technology**



ABOVE:

**\$2299**

'HASTINGS' 3-SEATER HANDCRAFTED FABRIC SOFA

Upholstered in an understated Natural linen.

Superbly crafted here in Australia, the 'Hastings' range represents quality craftsmanship and traditional elegance.

Also Available:

'Paris' Buffet \$2499



RIGHT:

NEW

**\$2299**

'PARIS' EXTENSION RECTANGULAR DINING TABLE

(W170-240 x H76 x D110cm)

Also Available:

'Paris' Upholstered Fabric Dining Chair \$599ea

**D O M A Y N E<sup>®</sup>**

Visit [www.domayne.com.au](http://www.domayne.com.au)

233207\_P01\_SQV



- For your nearest location dial 1800 **DOMAYNE**® (1800 366 296)
- **MELBOURNE** 8664 4300 (Enter the **QV** car park via either Swanston or Lonsdale Streets. Once in the car park, find the nearest elevator and make your way to level 4)
  - **SPRINGVALE HOMEMAKER CENTRE** 9565 8200 - NOW OPEN

Domayne® stores are operated by independent franchisees.  
Accessories shown are optional extras. Ends 07/10/12.

# DOMAYNE®



Stud detail



NEW

'Ravena' Bed Bench

## \$1599 'RAVENA' QUEEN BED

The NEW 'Ravena' features a high, elegantly shaped headboard with beautiful stud detailing, and gorgeously tapered timber legs. Put your own stamp on the 'Ravena' by customising the fabric, stud colour and timber leg stain. Upholstered in Warwick 'Diego' Fabric. Available in all sizes from Single up to King Size.

Also Available (shown):

|   |          |
|---|----------|
| <i>Bed Bench Large 140cm</i>  | \$799    |
| <i>Bed Bench Small 100cm</i>  | \$599    |
| <i>'Criss Cross' Square Side Table</i>                                  | \$549    |
| <i>'Ashton' Queen Quilt Cover Set*</i><br><i>in Blue by Linen House</i> | \$129.95 |



For your nearest location dial 1800 DOMAYNE® (1800 366 296)  
 • MELBOURNE 8664 4300 (Enter the QV car park via either Swanston or Lonsdale Streets. Once in the car park, find the nearest elevator and make your way to level 4)  
 • SPRINGVALE HOMEMAKER CENTRE 9565 8200

*affordable*  
**DESIGN**  
**EVERY DAY**



**\$1999** 'LETOILE' QUEEN BED

Bring hushed colour, subtle texture and acute beauty into your home with the classic French-inspired style of the 'Letoile.' Elegant cotton linen fabric and washed-finish Birch timber provide the perfect blend of neutral tones.

*Also Available (shown):*

|                                 |             |
|---------------------------------|-------------|
| 3-Drawer Bedside Table          | \$649       |
| 6-Drawer Dresser                | \$1699      |
| <i>'Maison Ruffle' by Aura:</i> |             |
| Queen Quilt Cover               | \$199       |
| Pillowcase                      | \$49.95pair |

*Also Available (not shown):*

|                  |        |
|------------------|--------|
| 6-Drawer Tallboy | \$1199 |
| Bed Bench        | \$649  |

**D O M A Y N E<sup>®</sup>**

Visit our website - [www.domayne.com.au](http://www.domayne.com.au)

Domayne<sup>®</sup> stores are operated by independent franchisees. Mattresses, bed linen and accessories are optional extras. Ends 07/10/12.

\*Single and king single quilt cover sets each consist of 1x quilt cover and 1x standard pillowcase. Double, queen, king and super king quilt cover sets each consist of 1x quilt cover and 2x standard pillowcases.

NEW

# POLYCLAD™

reinforced polystyrene cladding system

**Fully Accredited,  
Complete Wall  
Cladding System**



POLYCLAD™ is a reinforced lightweight cladding system for use on exterior walls of buildings. Commonly referred to as Exterior Insulation and finishing systems (EIFS).

It is made from Medium Density (M) Grade expanded polystyrene (EPS), moulded panels, coated and reinforced with an exterior **RBS Coating System** to give an exterior wall a durable structure and weatherproof standard property.

POLYCLAD™ has been tested in accredited laboratories and have been approved to meet Australian Standards for external building insulation cladding products, and is within the performance requirements of the Building Code of Australia (BCA).



ASK US  
TODAY

- ◆ BRAC ACCREDITED
- ◆ COMPLETE SYSTEM
- ◆ ENERGY EFFICIENT
- ◆ EASY TO INSTALL
- ◆ LIGHTWEIGHT
- ◆ 50MM, 75MM, 100MM SYSTEMS AVAILABLE

Building Commission  
**APPROVED** ✓



PHONE 1300 333 334

[www.polyclad.com.au](http://www.polyclad.com.au)



Professional finishes, made easy



RENDER  
TEXTURE  
WALL CLADDING SYSTEMS  
ARCHITECTURAL MOULDINGS  
EXTERIOR PAINT

PHONE 1300 333 331  
[www.multitex.com.au](http://www.multitex.com.au)



With a comprehensive **10-year** material replacement **warranty**, you know you can proceed with absolute confidence. (conditions apply).



Quality  
ISO 9001

Visit our showroom, 8-10 Swanston Street Preston, VIC 3072

The latest in European styling, real timber look & feel in a hard wearing porcelain tile





**NUANCES** EXCLUSIVE TO

**L A P E G E**

28-30 Brunswick Street, Fitzroy, VIC 3065 • T 03 9419 8777 • [www.lapege.com.au](http://www.lapege.com.au)

# Sleek Contemporary Design...



[www.sovereigninteriors.com.au](http://www.sovereigninteriors.com.au)

- Complete Interior Design Service
- Imported Italian Furniture
- Lighting
- Sculptures
- Artwork
- Glassware
- Accessories
- Window Treatments



**GOLD COAST SHOWROOM**

84 Upton Street Bundall Queensland 4217

Email: [info@sovereigninteriors.com.au](mailto:info@sovereigninteriors.com.au)

Tel: 07 55 920 161 Fax: 07 55 920 383

*Sovereign*  
INTERIORS



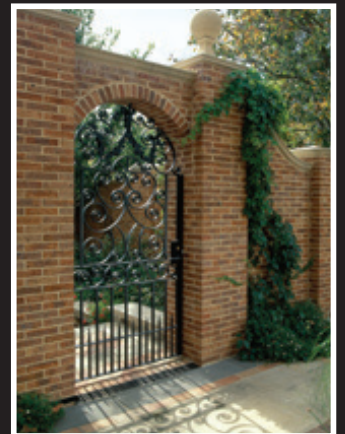
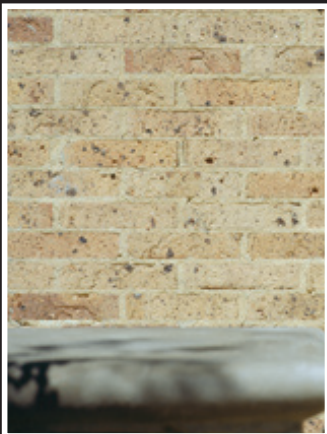
DANIEL  
ROBERTSON



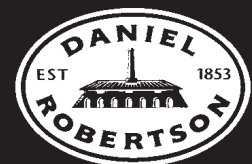
[www.danielrobertson.com.au](http://www.danielrobertson.com.au)



Daniel Robertson Australia -  
master crafters of clay brick and  
paving have been supplying the  
building industry for over 150  
years. Working with architects  
and owners, the Robertson  
team embrace the opportunity  
to realize architectural dreams.  
Daniel Robertson's bricks and  
paving are showcased in many  
of Australia's finest homes.



DANIEL ROBERTSON AUSTRALIA PTY LTD 490 Swan Street, Richmond, Victoria  
Tel: (03) 9303 4750 Fax: (03) 9894 1804 Email: [sales@danielrobertson.com.au](mailto:sales@danielrobertson.com.au)



[www.danielrobertson.com.au](http://www.danielrobertson.com.au)



Limestone  
Australia

Featured product:  
Western Australian Cream Limestone  
Diamond Cut Finish







Create something beautiful

# MELBOURNE CUSTOM HOMES

## Editor

Kandi Revian kandi@vipmarketing.net.au

## Advertising Sales

Jennifer Preston jennifer@vipmarketing.net.au

Kristi Welyk kristi@vipmarketing.net.au

## Administration & Accounts

Sharon Kullanacherry sharon@vipmarketing.net.au

## Assistant Editor

Bruce Kaplan

## Graphic Design

Murray Jongeling

## Cover Image

Award winning home by Atkinson Pontifex

Cover Photographer: Gerard Warrener

(Digital Photography Inhouse)

## Melbourne Custom Homes

ABN: 62 143735791

## Contact Us:

Ph 08 6270 6337

Fax 08 6311 7410

info@vipmarketing.net.au

www.vipmarketing.net.au

**Melbourne Custom Homes magazine is supported by the following leading building portals:**

[www.melbournecustombuilders.com.au](http://www.melbournecustombuilders.com.au)

[www.melbournebuilderdirectory.com.au](http://www.melbournebuilderdirectory.com.au)

[www.countrybuildersdirectoryvic.com.au](http://www.countrybuildersdirectoryvic.com.au)

**Custom Homes publications include:**



WA Custom Homes • Sydney Custom Homes • Melbourne Custom Homes  
For more information see [www.vipmarketing.net.au](http://www.vipmarketing.net.au)

## DISCLAIMER:

Melbourne Custom Homes magazine is subject to copyright, and the contents may not be reproduced in whole or in part without the express permission of the publisher. Although every effort has been made to ensure that the information contained within is accurate at the time of going to print the publisher accepts no liability for any errors or omissions or the consequences of any reliance upon these. The views and opinions contained within are not necessarily those of the publisher.





## 'The Headley'



'The Headley' Display Home Now Open:  
455 Springvale Rd,  
Glen Waverley VIC 3150  
Phone: 03 9558 9909  
Sales Contact: David Ruffolo  
Mobile: 0401 499 927

Opening Hours:  
Mon - Fri by appointment only  
Sat & Sun 12PM - 5PM

[www.drhme.com.au](http://www.drhme.com.au)

Find us on  





## Editor's note

Welcome to the second edition of Melbourne Custom Homes magazine which follows the huge success of edition one, published in 2012.

Our WA magazine is in its tenth year so we knew we were on to a good thing, but the positive feedback from both readers and advertisers in Melbourne has been truly overwhelming. Thank you to those who took the time to contact us.

I'm new to the Custom Homes group of magazines, having worked on publications in the wedding and food industry it was a great pleasure to be involved in my first building industry mag. Yes OK, partly as it satisfies the voyeur in me - after all who doesn't like looking into other people's homes, especially stunning, luxury homes most of us dream of?

Consistent with the format of the Custom Homes publications, this edition of Melbourne Custom Homes features many of Victoria's best builders, showcasing some of the truly exceptional homes they have recently completed. We aim to give you a glimpse at some of the best, and in fact many of the homes featured in this edition have been recognised by industry leaders with an MBAV award. (To find out more about what this means, don't miss our article on pg 28.

Due to not only the size but the attention to detail and quality of craftsmanship, it's not surprising to learn that some of these homes have taken years to complete, but what's a few years when the result is your dream home?

Embarking on a journey to see your dream home come to life can be one of the most exciting processes of your life and if this is your trip, I wish you smooth sailing along the way. Melbourne Custom Homes is certainly a great place to start, an excellent source for design ideas and profiles of top custom builders that have the skill and experience to complete your project!

PS. Our online site [www.melbournecustombuilders.com.au](http://www.melbournecustombuilders.com.au) and sister site [www.melbournebuilderdirectory.com.au](http://www.melbournebuilderdirectory.com.au) show you even more. You'll find additional photo galleries and project specifications and more.

*Kardi<sub>x</sub>*

# Timeless Style... Enduring Quality.



THE SANCTUARY



## Designed For Inner Melbourne Sites.

Lucas Morris has designed a series of award winning homes that capture the essence of modern living. Contemporary designs that encapsulate Melbourne's diversity; designed with timeless style and to quality standards at an affordable price. Visit the Sanctuary Display Centre and see for yourself how your dreams can become a reality.

**2010 MULTI AWARD WINNER**  
**MBAV BEST DISPLAY HOME**  
**MBA NATIONAL BEST DISPLAY HOME**  
**HIA BEST DISPLAY HOME**



**Visit the Sanctuary display home**  
Open Saturday - Wednesday 1pm to 5pm,  
or by appointment

**62 Belmore Rd BALWYN Mel Ref: 46 B5**  
Phone 0409 138 918

**Head Office:** 796 High Street, Kew East [sales@lucasmorris.com.au](mailto:sales@lucasmorris.com.au) **Ph. 9810 2888**  
A MEMBER OF THE AWARD WINNING ENGLEHART GROUP



*Love My Home*

[lucasmorris.com.au](http://lucasmorris.com.au)



52



76



176

# Contents

|                                 |     |
|---------------------------------|-----|
| Custom Builders                 |     |
| Melbourne                       | 32  |
| Enterprise Constructions        | 35  |
| Bellemore Homes                 | 43  |
| Stonehenge                      | 51  |
| Atkinson Pontifex               | 59  |
| ARCH:10                         | 67  |
| Englehart Homes                 | 75  |
| Norton Builders                 | 83  |
| Rycon Building Group            | 91  |
| Designer Interiors              | 106 |
| Beautiful Kitchens & Bathrooms  | 134 |
| Stunning Exteriors              | 154 |
| Regional Building Excellence    | 178 |
| Hedger Constructions            | 181 |
| Michael Higgins Building Design | 189 |
| Graeme Alexander Homes          | 197 |
| Advertisers index               | 214 |



The building's signature elements are the dramatic oversailing roof and underlying brickwork constructed with Daniel Robertson Roman bricks in London Blend.





# Ahead of the Pack

Architect's-own home and office blends timeless materials and proven building technology with leading edge design

Designing their own house is almost a rite-of-passage for an architect. "It was one of the hardest houses I have designed," admits Taras Wolf. "That's because you have accumulated too many ideas over the years of doing other people's houses."

How do you make a house out of so many ideas? "The key to holding it together is your budget," he asserts. "That quickly eliminates a lot of the fantasy ideas that we architects tend to have!"

The use of time-proven materials and techniques is central to Wolf's pragmatic approach. "Apart from having more steel than usual, (structurally) this is ultimately your average brick veneer home," he contends.

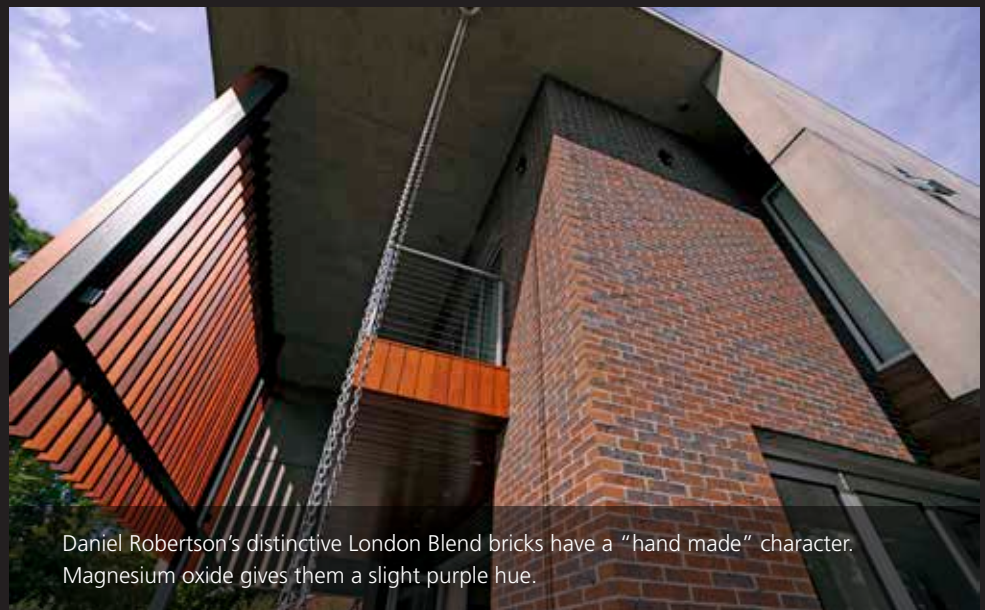
The Wolfs lived in a 1940's brick veneer on the site while formulating their ideas. All that remains is now the guest quarters and a brick tunnel. This section was partly retained for sentimental reasons but it also functioned as the practice and site office during the two-year build.

Externally, the signature elements are the oversailing roof and underlying two-storey

brick facade. No ordinary bricks, these are Daniel Robertson premium units in London Blend. They have a "hand made" character with colours ranging from greys to reds and tans, deep browns and blacks. Wolf chose distinctive Roman (50mm high) bricks for the front and sides, and standard height (76 mm) units to the rear.

The brickwork was laid by the builder David Toebelmann, who originally trained as a bricklayer. "He's a man with an eye for quality and a lot of patience," Wolf commends. The black-pigmented mortar was flush finished and then sculpted to blend with the surface irregularities of each brick.

Why brick, we asked? "There are all the obvious things: it's a great thermal material, strong in compression, long lasting and low maintenance." But more than that, Wolf values the symbolism and psychological importance of brickwork. To him bricks represent safety, strength, security and stability, giving what Taras calls "psychological comfort" to the occupants.



Daniel Robertson's distinctive London Blend bricks have a "hand made" character. Magnesium oxide gives them a slight purple hue.

The use of low maintenance, timeless materials continues inside with polished concrete, timber and quality fixtures and fittings throughout the 28 intertwined spaces.



Internally, 28 intertwining spaces are grouped around a vertical “corridor” that allows light to penetrate from the north-facing front through to the back and for heat to transfer from bottom to top. It’s a house that has to be experienced, encouraging the explorer to move seamlessly through the building.

In the house’s current configuration there are four bedrooms, four bathrooms, and a further shower and bathroom in the office

annex. The most unusual feature is the “Wolf Room” which houses Taras’s prized 1968 Mercedes 280SL convertible as well as functioning as his office!

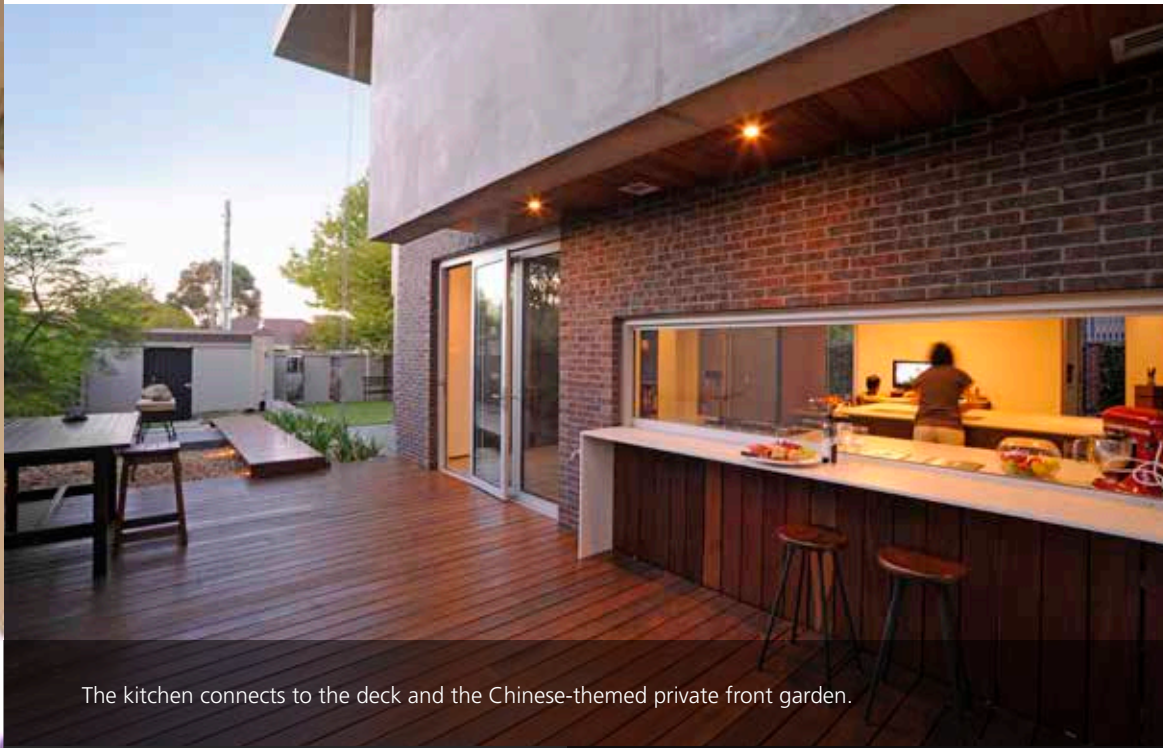
Ever pragmatic, Wolf has allowed for the building function to evolve over generations without rebuilding or renovation. For example, the office could be simply repurposed as separate accommodation for an elderly parent.

He contends that allowing a building to have a long lifespan without renovation or modification is essential to containing embodied energy. “There’s no point in having a house which is very energy efficient and then wasting all that energy in the cost of renovating.”

Taras Wolf has used his talent and vision and practical approach to create a flexible, efficient family home for generations to come.



Taras Wolf's pristine 1968 Mercedes 280SL is parked in his office at the rear of the house! Again these are Daniel Robertson London Blend bricks, this time in standard height.



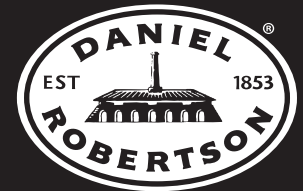
The kitchen connects to the deck and the Chinese-themed private front garden.

#### Wolf house

Location: Chadstone VIC  
Owner: Taras & Rebecca Wolf  
Architect: Wolf Architects  
Builder/bricklayer: David Toebelmann

#### Featured products

Daniel Robertson® London Blend clay bricks in Roman (50 mm high) and standard (76 mm high)



Visit us at **The Brick Studio**,  
490 Swan Street, Richmond VIC 3121  
t. 03 9303 4750  
sales@danielrobertson.com.au  
www.danielrobertson.com.au

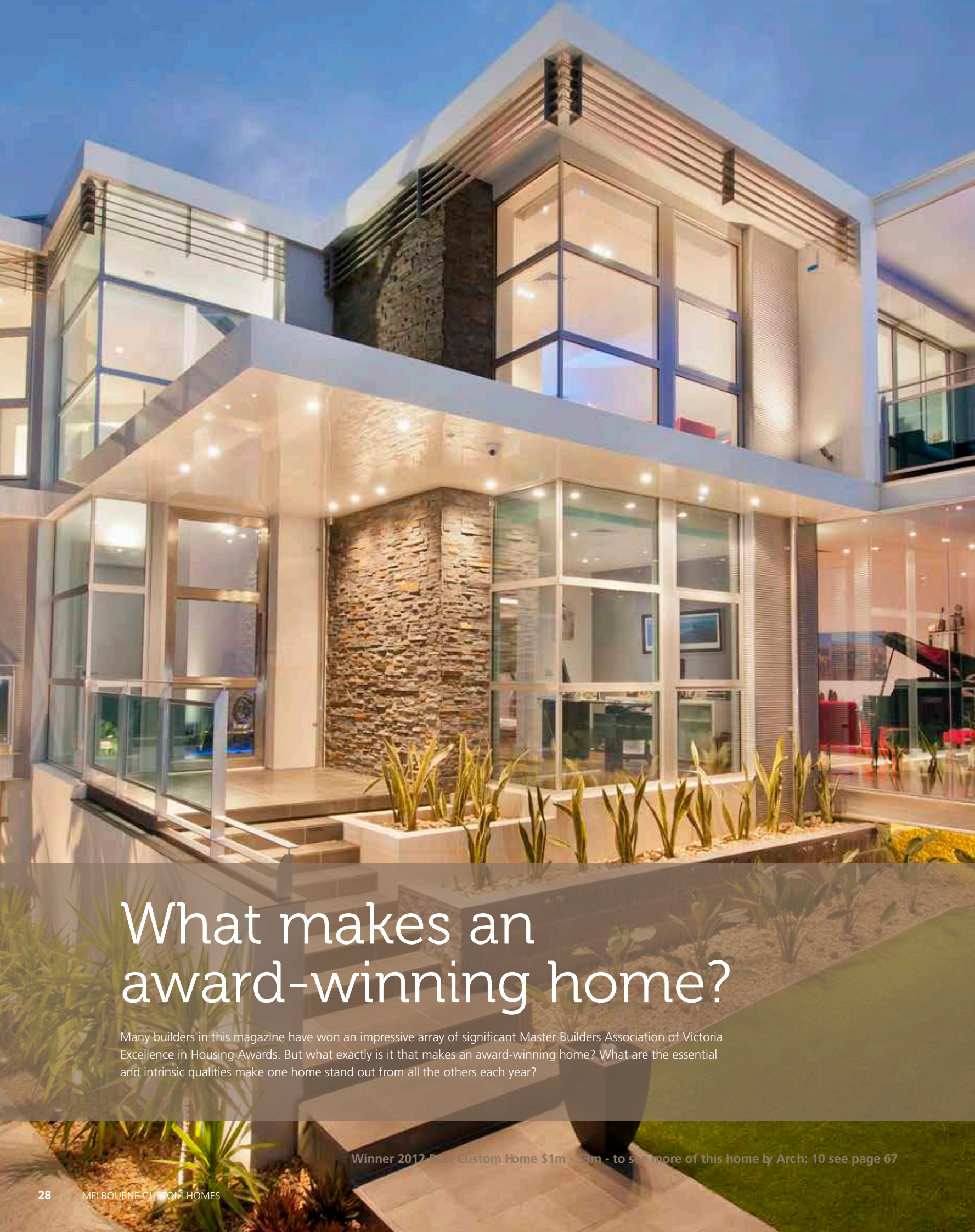




APPROVED BY THE EXPERTS

**ekodeck**<sup>®</sup>  
engineered bamboo composite decking

Turn to pages 212 – 213 for product feature article >



# What makes an award-winning home?

Many builders in this magazine have won an impressive array of significant Master Builders Association of Victoria Excellence in Housing Awards. But what exactly is it that makes an award-winning home? What are the essential and intrinsic qualities that make one home stand out from all the others each year?

Winner 2012 Best Custom Home \$1m - \$3m - to see more of this home by Arch: 10 see page 67

It takes sixteen judges to make these decisions. Between them they have more than 500 years' accumulated industry experience. They come from engineering, design and carpentry backgrounds. Some have specialised in renovations, restoration, project management and administration. One is active in the not-for-profit Habitat For Humanity organisation, another is a devoted supporter of the Cats football team.

Together they bring their professional knowledge, insights and enthusiasm to select homes – for which the builders have nominated themselves – that meet the demanding criteria required to build a standout residence that will win an award.

The first essential ingredient is high quality of construction, inside and out. Materials matter. What materials are used and how are they used? How are complex problems solved? Foresight, good planning, craftsmanship and fine attention to detail from the beginning to the end matter.

Judges also look at client relationships. Well thought-out strategies that allow frequent discussion and negotiation mean better decisions are made. Systems and processes put in place from the beginning with frequent meetings both on and off site lead to much better outcomes. Home building then becomes an involving and exciting project for the client and satisfaction for everyone else.

Award categories are split across a range of price groups, so value for money is another point to be considered. Cost management is essential. Costs must be in line with current market trends, and

ideally kept consistent throughout the project, with minimum unexpected variations. Whether it is a luxury home or a less-expensive dwelling, costs have to be reasonable and the money spent wisely and well.

Architecture, style, materials and methods need to come together to blend into the chosen location. Little things and innovative solutions mean a lot.

And finally, the judges look for sustainability and innovation. Use of natural light, thoughtful design, plus imagination and inventive technology are needed to meet the environmental expectations of current and future generations. The award-winning home must consider energy use, water conservation and maintenance requirements for the years to come.

Of course, ultimately, an award-winning residence must delight its owners and provide a comfortable and enjoyable living experience for many years

**Best Display Home over \$750,000  
- to see more of this home by  
Englehart Homes see page 75**

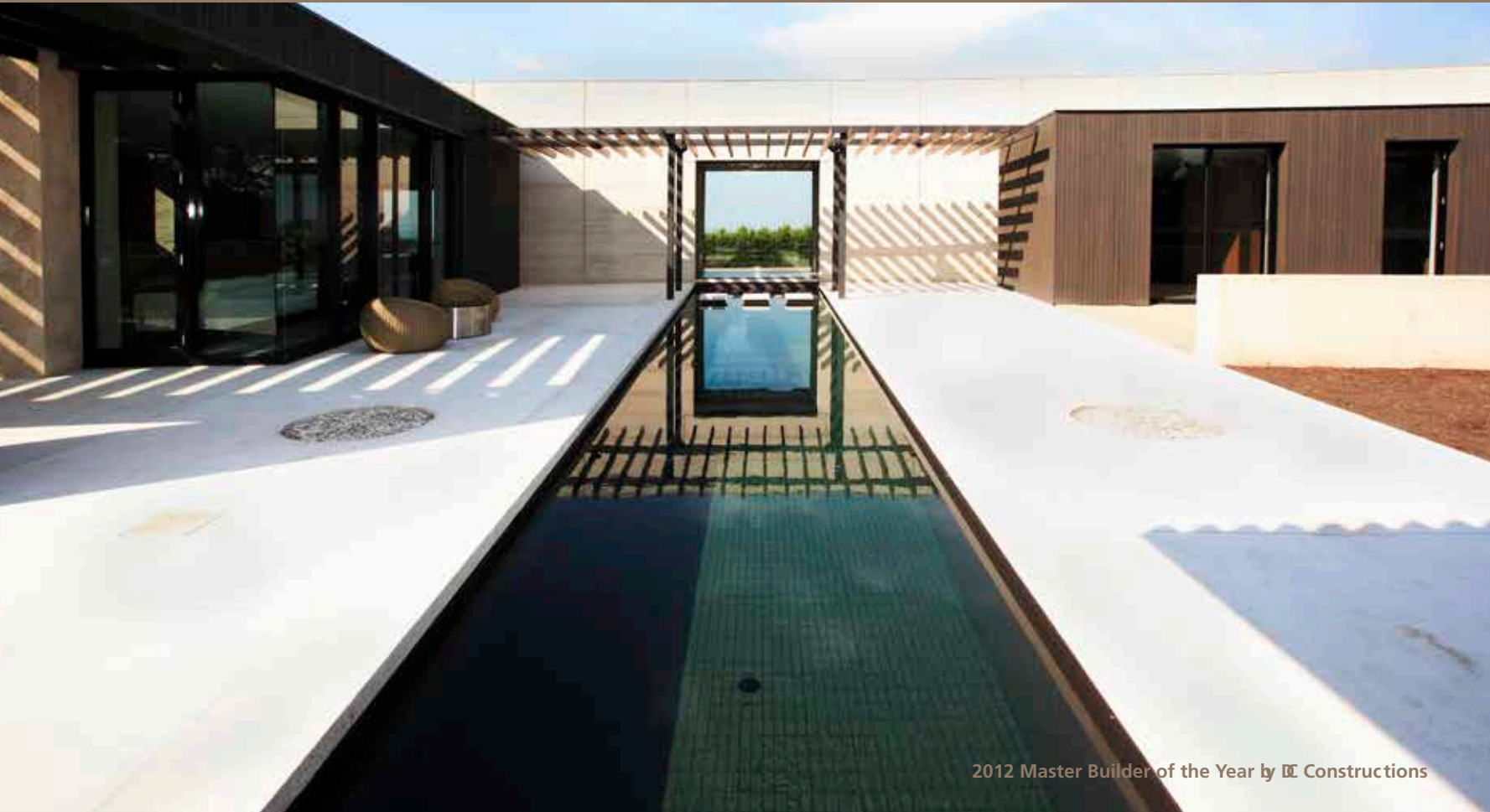


**This house located in Merricks won the 2012 Master Builder of the Year Award for its builder, D&C Construction. The judges also voted it Best Custom Home over \$3 million.**

Set within a peaceful vineyard environment, this winning home showcased two other elements needed to impress the judges: design and execution of design. Design starts with a creative idea; execution of the design is putting it into practice – making it work. The challenge is twofold: creating an elegant, aesthetically pleasing and innovative design and then bringing the concept to fruition.

Curving rammed earth walls form the primary structural spine of the Merricks house. Extra effort was needed for the set-out, computerised surveying equipment and multiple templates were used. Carefully placed undulating timber ceiling-battens and polished concrete floors reveal craftsmanship. The necessary fixtures, fittings and all-round finish were meticulous.

Energy dependency is reduced in Merrick House with its hydronic slab insulation layer, and water is conserved with its 70,000-litre underground tank. The water is collected and treated on site. Windows are detailed internally to prevent thermal transmission. These are the ideas that make a difference.



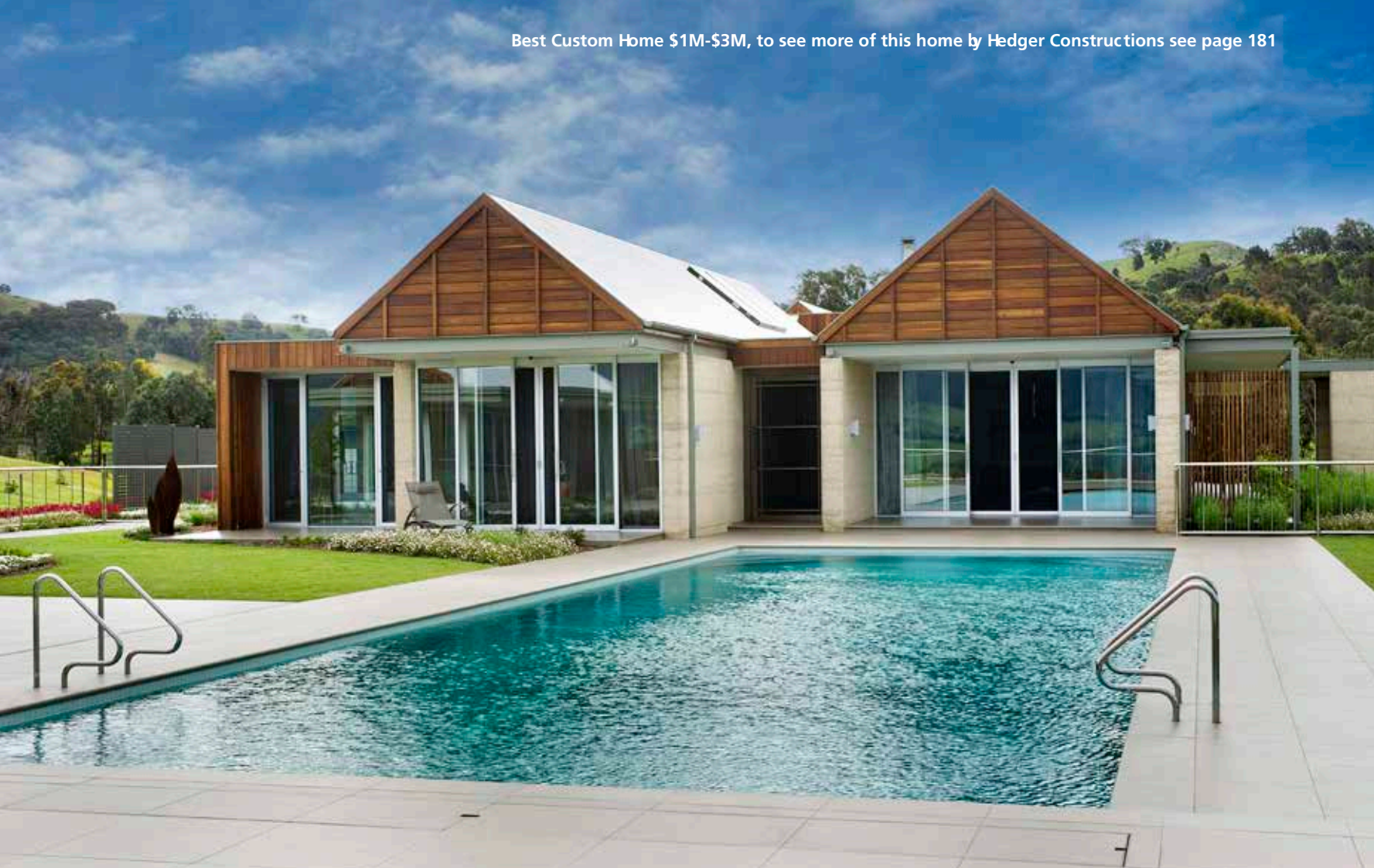
2012 Master Builder of the Year by D&C Constructions







2011 Best Display Home over \$500,000, to see more of this home by Enterprise Constructions see page 35



Best Custom Home \$1M-\$3M, to see more of this home by Hedger Constructions see page 181



Picture courtesy of Atkinson Pontifex



Top Custom  
Builders Melbourne

# The smart way to build

Make big savings on building and energy costs while doing your bit for the environment with this remarkable building system

The Thermacell system is an exceptionally strong system, with fantastic insulation properties. Our blocks have been cyclone rated, and have been used for new houses, high wind areas, load bearing walls, multi-storey buildings and factories.

Visit the Thermacell website to learn more about the product that's revolutionising the building industry and letting Australian ownerbuilders create the homes of their dreams.



THE ORIGINAL AND THE BEST

PO Box 447  
Somerville VIC 3912  
Phone: 03 5977 7996  
Geoff Bennett: 0414 664 500  
David Bennett: 0412 577 431  
Email: [info@thermacell.com.au](mailto:info@thermacell.com.au)  
Website: [www.thermacell.com.au](http://www.thermacell.com.au)



Enterprise Constructions (Aust) Pty Ltd

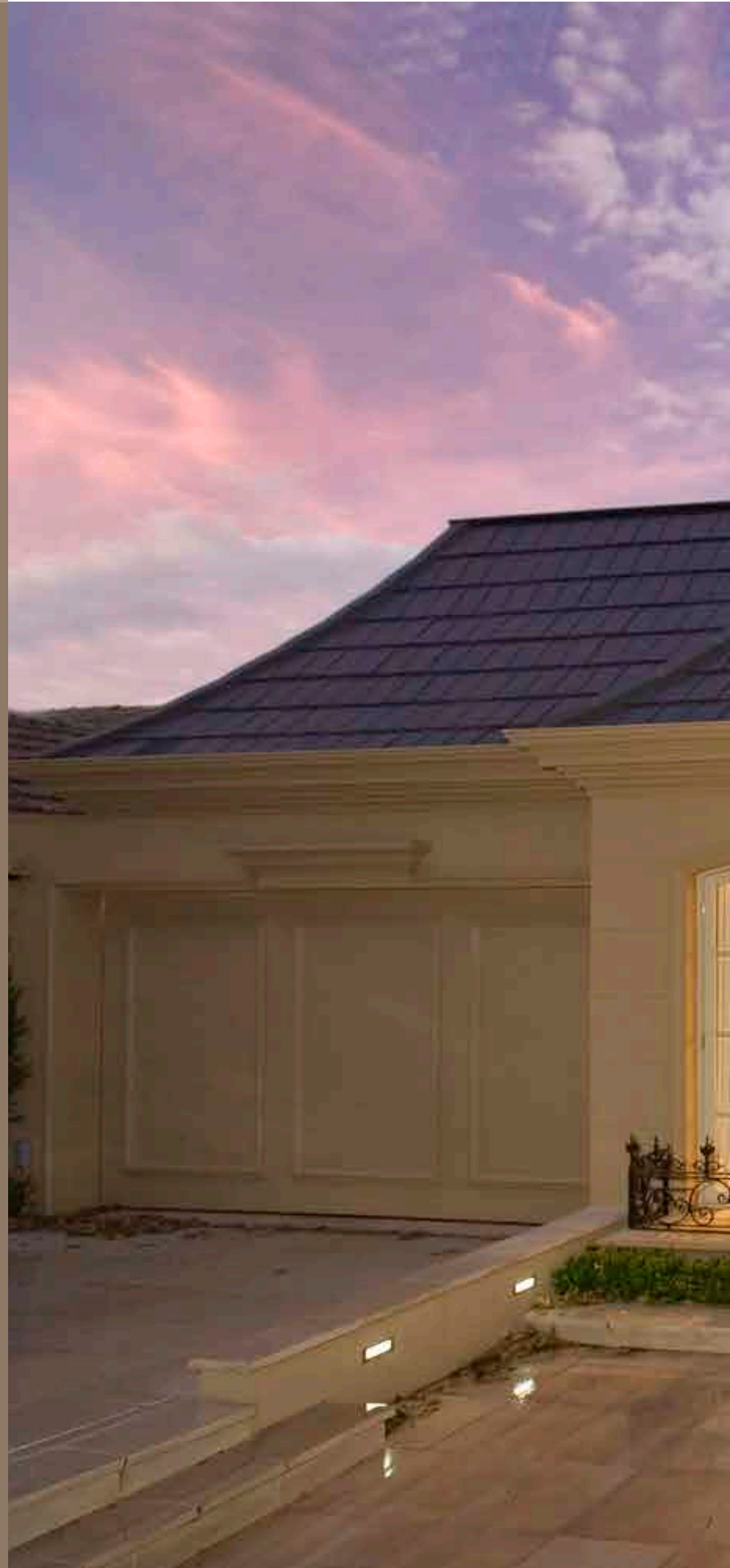
# Works of art

Monet the artist was forever searching for new textures and new effects in his paintings and in his garden. He always broke the rules, combining the traditional and historical with the recent and contemporary.

This Enterprise Constructions house, fittingly named the 'Monet' won the 2012 MBAV Best National Display home over \$500,000 Award, demonstrating the same wonderful blending of old and new.

The Melbourne house is a timeless architectural classic echoing the grand old homes of provincial France, while the exceptional features, materials and luxurious quality belong right in today's world.

Natural light and space embrace you on entering this lovely dwelling. French doors and frameless floor-to-ceiling windows, including a stunning bay window, enable a view of the Mediterranean themed courtyard with its central water feature.







An integrated coffee machine waits to make your early morning cappuccino. Sit at the stunning island bench made of white Italian Calacatta marble. State-of-the-art fittings to satisfy the chef, and a walk-in pantry with wine racks, allow more than ample storage space.

The master bedroom has an en suite of floor-to-ceiling marble, twin vanities with Grohe tap ware and a convenient spacious walk-in-wardrobe.







High coffered ceilings, ornate cornices, oak floor parquetry with meticulously handcrafted Antoinette borders and a hand-carved limestone fireplace contribute to a feeling of grandeur.

Expansive living zones lead to a stunning alfresco dining area for outside entertaining, perhaps with a late movie in the leisure/cinema room. All are designed for today's lifestyle.

This is a house to live and enjoy.





Soaring three-metre square-set ceilings and richly coloured tiles welcome you into this harmonious family-friendly home that exhibits the beautiful and dramatic lines of a Mondrian artwork. The home combines luxury living with everyday practicality.

The double entrance doors are 2.7 metres high and lead to a magnificent formal living area with its frameless gas fireplace and the floor-to-ceiling windows that are a feature throughout this contemporary and versatile dwelling.

An eye-catching view of a dramatic Japanese water feature in the central courtyard continues the minimalist elegant theme.

Expansive hallways with plush carpets lead throughout this sophisticated house.

The stylish kitchen with its open-plan family area is the centrepiece. Stainless steel appliances, polished quartz bench tops and two-packed cabinetry make for easy food preparation.

A butler's pantry is cleverly concealed, allowing preparations for entertaining while guests enjoy a cocktail at the bar, or a coffee from the shining espresso machine.

The clean, simple lines continue outside, with stainless steel bench tops in an "outdoor room" where an integrated barbecue and gas fireplace allow for year-round entertaining. The resort-style outdoor area is perfect for summer living.

Afterwards, enjoy a Gold class cinema viewing with massive projector screen and reclining chairs with family and friends.



The luxury and style continues in the master bedroom, with its his-and-her walk-in robes and elegant en suite.

A spacious rumpus room is ideal for teenagers to gather with friends or as a retreat where they can study and dream.

This is a perfect home where a family can relax and enjoy life in pleasure and comfort, and entertain friends all year round.

Enterprise Constructions are a specialist, boutique building company who have been constructing luxury custom designed homes in Melbourne's premier suburbs for the last 19 years.

Whether contemporary or classic Enterprise Construction's expert design team will help your ideas come to life in a stunning architecturally designed home that reflects the company vision of distinction, style and elegance.

The tradesman that are employed by Enterprise Construction are also experts in their field, ensuring that each home is completed with exceptional craftsmanship and attention to detail.

Enterprise Constructions currently have the Mondrian display home available for viewing, located at 1495 Burke Road, Kew East.



**Enterprise Constructions (Aust) Pty Ltd**

34-38 Steel Street, North Melbourne VIC 3051

P 9329 9611

[enterpriseconstructions.com.au](http://enterpriseconstructions.com.au)







# Prestigious Homes

From humble beginnings in 1985 as a single project company, Bellemore Homes has grown to become one of Melbourne's most prestigious, custom design builders.

Established 25 years ago by husband and wife Nick and Tina Pateras, the same enthusiasm and attention to detail is still put in to every Bellemore Homes creation.

Right from the first meeting you can tell that the Bellemore Homes experience is something different. Because every home is created from the ground up according to the customer's needs and desires, we are able to deliver truly stunning results that are elegant, as well as functional. Because we don't restrict ourselves to predesigned plans like other builders there is almost no limit to what can be achieved.

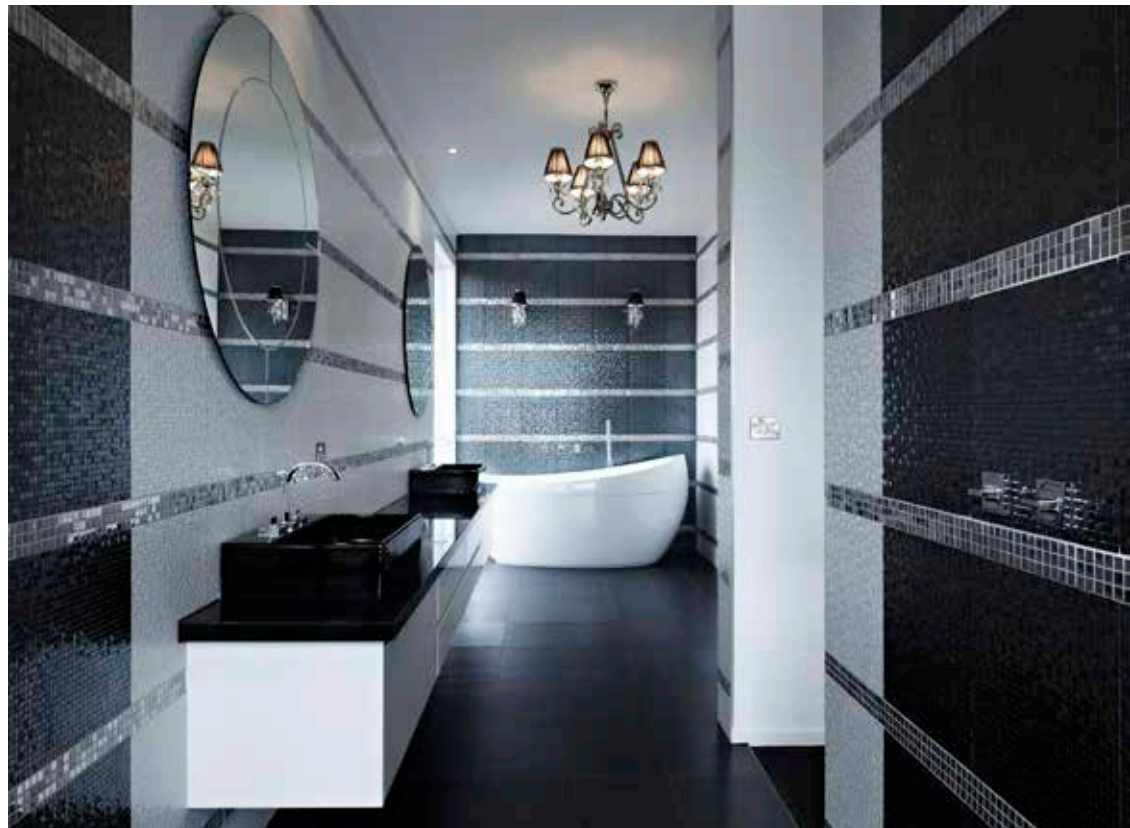
Innovation in design is but one step on the way to a truly stunning home. For this reason Bellemore Homes has assembled a team of industry professionals who strive for excellence in customer service and quality construction. All of our suppliers and trades people have been hand selected for over 20 years to ensure the quality of materials and workmanship needed to produce results befitting a Bellemore Home.





The Montage is an up to the minute display home showcasing some of the latest key trends to emerge from Europe. The elegance and individual style of this home makes a strong statement from the street and is a preview to its unique sophisticated quirks. From the moment of entry, the unusual palette of black and white appear to be a dominant theme, bringing light into the room, and naturally creating points of visual interest with contrasting tones.

The lounge room is situated immediately to the right of the entry. Making interesting use of the second level void, this room features raised ceiling and a number of windows that almost border the roofline. Warming the area with a flood of natural light, it also emphasizes the contrasting black toned bulkhead, which sits above a glass-encased fireplace. Functionality and true avant-garde style combine here to create the perfect space for both formal living and casual entertaining.







Polished white floor tiles flow from the front door straight through to the kitchen, meals and sitting area towards the rear of the residence. With countless windows and access to the outdoors on either side of the kitchen, a pleasant and bright experience is to be had by occupants. Ample storage space, sleek black cabinetry and a generous walk in pantry surround a gorgeous black marble bench top. The area is logically located within close proximity to both the dining area and expansive alfresco, bi-fold doors soften the dominant whites in the room and invite the guests out onto the deck.

Twin floor to ceiling windows grace the staircase, allowing light to open up a typically gloomy space. Opulent styling continues on the second level of the home. In the master bedroom, black carpet and the continuation of patterned wallpaper from downstairs create a dramatic effect. A series of interior windows

that overlook the lounge room below are an eye-catching feature. A large walk-in-robe is situated parallel to the remarkably decorated en-suite. Parallel lines embedded into the tiling along the wall lead the eye down the room and elongate its dimensions, generating an interesting effect of space and light. The standout feature of the en-suite is its screen-less shower. A large window almost fills the entire back wall of the shower, while a fascinating image of a woman is transcribed onto the adjacent wall using a selection of small mosaic tiles. Adding a stunning aspect to the room, the image acts to soften the dominance of geometric forms.

Encompassing all of the different design aspects scattered throughout the home, this room accurately reflects its distinctive appeal. Elegance and contemporary styling is applied throughout the property with a functional and flowing floor plan.



This stunning home in Kew draws inspiration from the Bellemore Homes display home, the Newport. The geometric shapes of the front facade are highlighted through the use of feature materials. Rockfaced bricks draw attention to the large horizontal windows of the front lounge, while the lengthy front portico invites you into the home. Once inside, curved walls add a striking feature to the front entry and lounge.



The use of the upstairs landing as a study space brings light and openness to a room that would otherwise be cold and secluded. Spacious family and living areas adjoin the kitchen, and open out onto the outdoor meals area to create a fantastic for entertaining. The hidden butler's pantry features stone benchtops and Imperite cupboards to match the main kitchen, and allows a second convenient space for food preparation.

A covered upstairs balcony connected to the master bedroom, creates a private retreat, while also overlooking a spacious outdoor area. Overall this house is designed with functionality and family areas in mind, and creates a good relationship between indoor and outdoor spaces.



1st Floor, 2 Centreway,  
Mount Waverley, Victoria 3149

P 9887 8984  
F 9887 6097

[bellemorehomes.com.au](http://bellemorehomes.com.au)  
[enquiries@bellemorehomes.com.au](mailto:enquiries@bellemorehomes.com.au)

The logo graphic consists of four adjacent rectangular blocks of color: red, yellow, orange, and purple.

Stonehenge™





Stonehenge™

'Everything in architecture is connected to a complex structure of meaning, insinuation and connotation, exactly like in clothing. The occasion in this case is the design of your house. It is a big one, a very big one, with a long aftermath, and you will be seen for many years to come and be judged by others what they see of you. So try to dress not for the night but for half a lifetime. That's quite different.'

Hans Balwaldski,  
Senior Project Architect,  
Stonehenge



### **Awarded 30+ Year History**

Based in Melbourne, Stonehenge is a boutique custom design and construction company incorporating in-house planning, architectural design, interior design and construction services under the one roof.

Multiple award winners of 60 National and State housing awards, Stonehenge has gained an enviable reputation having designed and built many of Melbourne's finest homes over our 30 plus year history.







### **Synergy of Design & Construction Under The One Roof**

Whether you are in the market for a new luxury home or renovation, Stonehenge provides a completely integrated service that will design, construct, furnish and landscape your project from inception to completion.

The synergy of our professional team brings integrity, authenticity and openness to every aspect of the work we do. You will benefit from the peace of mind, ease and convenience of dealing with one company to attend to all your needs throughout the entire design & construction process.





## Superbly Crafted Luxury Homes

Our architects listen, assist and guide you towards an outcome that chooses:

- Modesty over ostentation
- Natural appearance over glamour
- Integrity & honesty over pretentiousness & hypocrisy.

Your superbly crafted Stonehenge home will be customized to your way of life as a synergistic statement of architectural harmony and exceptional construction quality.



## Meticulous Attention to Detail

Every aspect of your home, amenities, outdoor living, fence styling and garden will be designed, documented and costed in minute detail to deliver you a new home that works - on time and on budget.



### A Commitment to Excellence

With an ongoing commitment to excellence in everything we do, the Stonehenge team is constantly adopting the latest practices and products to maintain our reputation as leaders in the design and construction of luxury homes.



68 Clarke Street  
South Melbourne VIC 3205

P 9696 2522  
F 9696 2511

[stonehenge.com.au](http://stonehenge.com.au)  
[info@stonehenge.com.au](mailto:info@stonehenge.com.au)

#### Display Home Now Open

Williams Cove  
9 Waterfront Place  
Williamstown Vic 3016  
Open: Sat & Sun 2pm-4pm  
[www.williamscove.com.au](http://www.williamscove.com.au)  
(Melways Ref 55 G8)



**ATKINSON • PONTIFEX**  
superior quality :: exacting standards :: exceptional service





# Testament to skill and vision

Atkinson Pontifex is a multi award-winning boutique construction company that builds luxury homes in Melbourne's Bayside suburbs. Childhood friends Dean Atkinson and David Pontifex founded the company in 1985, sharing a common vision to build homes of distinction and provide exceptional customer service.

Successful collaboration with award-winning architects and interior designers, and experience with award-winning landscapes at the prestigious Royal Horticultural Society Chelsea Flower Show, has led to many satisfied and repeat clients.

The Atkinson Pontifex mission is two-fold. Dean and David are passionate about building the finest residential homes, and enjoy delivering results that far exceed clients' expectations. Pursuing excellence with every home, the two work hard to maintain a reputation as the elite master builder of choice in the Bayside area.

The approach is simple – each year only three to four homes are selected to build. Each project is chosen based on whether it will be challenging, enjoyable, and ultimately successful for both the clients and Atkinson Pontifex. This enables the company to achieve the quality and service clients expect. While most projects are new homes, Atkinson Pontifex also enjoys the challenge of renovating and extending quality homes. Above all else, Atkinson Pontifex stands for integrity, priding itself on friendly, honest service. For the past 25 years, it has established a reputation for exactly that.

Directors Dean and David are qualified carpenters and joiners with more than 50 years' experience between them, and enjoy a hands-on, customer-oriented approach. Both establish direct relationships with every client, and ensure open communication from start to finish. Furthermore, clients only ever deal with Dean or David. As the number of projects each year is limited, every client receives their personal service. From the initial design phase, to completion and well into the future, David and Dean share their journey at every step.







Winning the Australian Achiever Awards for Victoria's Building & Construction Services in 2006, 2008, 2011 and 2012 is testament to Atkinson Pontifex's ongoing commitment to exceptional customer service. Indeed, the 2012 result displayed an impressive 99.36 per cent score for customer relations and service.

Unlike other builders that subcontract, Atkinson Pontifex proudly employs its own staff of 15. This means the best people are always available for the job, who share a passion for craftsmanship and attention to detail. Choosing the right people and ensuring job satisfaction means a happy, productive workforce – very few staff have left. In fact, the longest-serving team member has been with Atkinson Pontifex more than 20 years. The dedicated team includes an office manager, full-time carpenters, apprentices and landscape gardeners.





The multi-award-winning house at 14 Coronet Grove, Beaumaris, is the result of a collaboration between Atkinson Pontifex and architect Peter Maddison, of Maddison Architects – host of the TV series *Grand Designs Australia* – with contributions from interior designer Fiona Austin, of Austin Design Associates, and landscape designer, Mark Browning, of Cycas Landscape Design. Built in an elevated seaside location, this unique, contemporary home has sweeping views of Port Phillip Bay. The home responds beautifully to its coastal natural surrounds, and has featured in design publications in Australia and internationally. The residence is an extraordinary feat of design and engineering, which Atkinson Pontifex has executed meticulously.

To make the most of the bay views, the home comprises a south-facing, cantilevered, black zinc-clad living area, and a two-storey, north-facing alabaster concrete block wing. The two elements are separated by a circulation zone, with the roof prised up over the elements, allowing the northern sun into the south-facing wing living zones. Anodised aluminium window frames, sawn concrete block and black zinc were chosen for their architectural qualities. The timbers used, including 4.5 kilometres of decking, plus cladding, fencing, and doors, have Category One durability and have been sealed with the best available products. Materials requiring minimal maintenance were specifically sought because of the particular demands of the sloping block and its closeness to the beach. The home

impresses as a unique and stylish residence with bold lines, streamlined living spaces and a light, airy feeling. It is one of the most complex and challenging homes Atkinson Pontifex has built.

“The block deserved something special and we’re proud of the outcome,” Dean says. “There are five bedrooms, three bathrooms, two powder rooms and a 26-square basement that easily houses a boat and a caravan.”

The home also has two spectacular alfresco entertaining spaces, each with its own comprehensive outdoor kitchen, as well as a Gold Class cinema standard 12-seat home theatre. The 270-degree views over Port Phillip Bay can be enjoyed from most of the house on the upper and lower levels, and from the extensive outside decking. Indigenous plantings need minimal watering and accentuate the masculine beauty of the residence. The 16-metre pool with spa has underwater windows facing the street. The house took just over two years to build, but Dean says it was worth the time and effort. The property will stand as a testament to the skill and vision of Atkinson Pontifex.

At the HIA-CSR Australian Housing Awards 2010, 14 Coronet Grove won top honors as Australian Home of the Year and Custom Built Home of the Year. At the 2009 HIA-CSR Victorian Housing Awards, it was named Victorian Home of the Year, Custom Built Home of the Year and Custom Built Home over \$2 million. The house also won Best New Dwelling in the 2009 Bayside Built Environment Awards.



Atkinson Pontifex has also won HIA awards for Best Renovation and Addition, Best New Kitchen, and Best New Bathroom, among others.

Atkinson Pontifex is highly sought after in the Bayside area, with many homeowners finding the company through word of mouth from satisfied previous clients. Architects and interior designers also regularly refer clients to Atkinson Pontifex, because of work quality and extensive experience working on both traditional and contemporary style luxury homes. The Coronet Grove residence is a prime example.

With the company's reputation for attention to detail, excellent craftsmanship, and the focus on personal service and relationships with each client, homeowners can feel assured they will be proud of their Atkinson Pontifex residence for many years.



3/69 Tulip Street Cheltenham Vic 3192

P 9585 1165

[atkinsonpontifex.com.au](http://atkinsonpontifex.com.au)

[info@atkinsonpontifex.com.au](mailto:info@atkinsonpontifex.com.au)







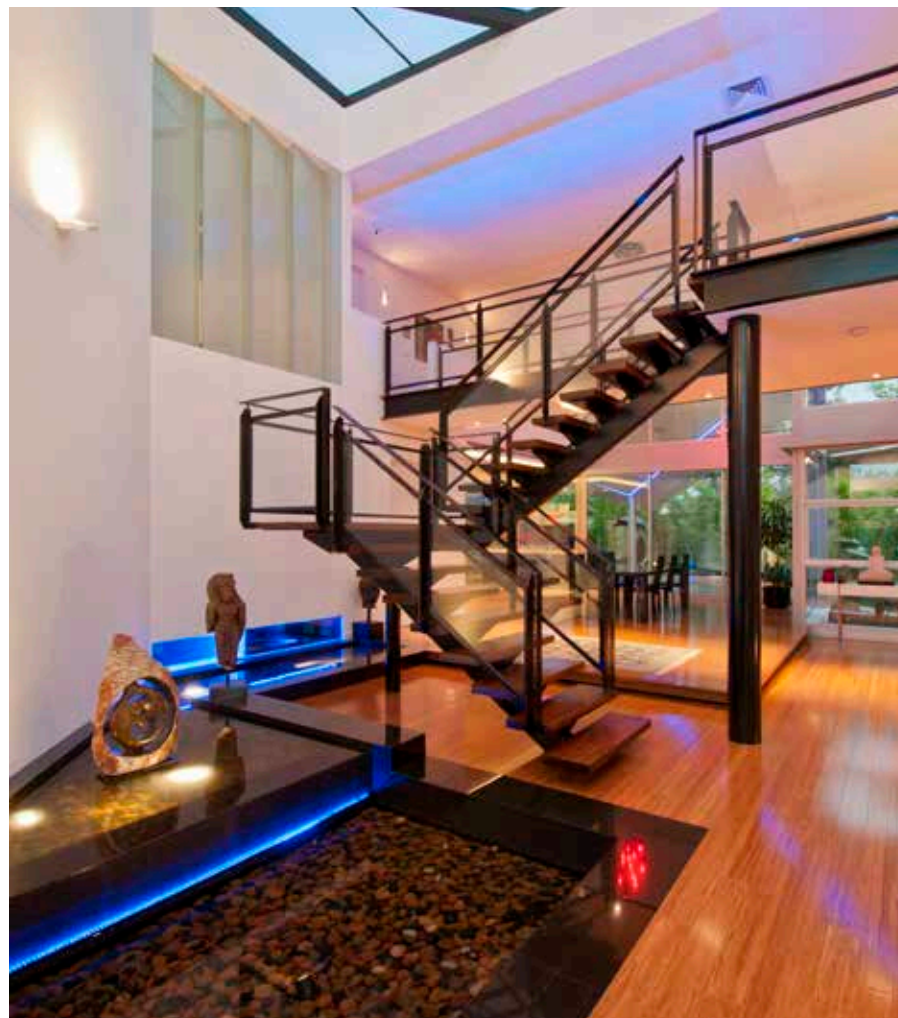
# Light, water and air

An internal water feature welcomes visitors at the front door of this uniquely designed two-storey 65-square home in Leyland Road, Mount Waverley.

Around a suspended staircase and sky bridge framed under a trapezoidal glass roof, water cascades and gently meanders to create an atmosphere of peace and harmony. The interior is filled with natural light.

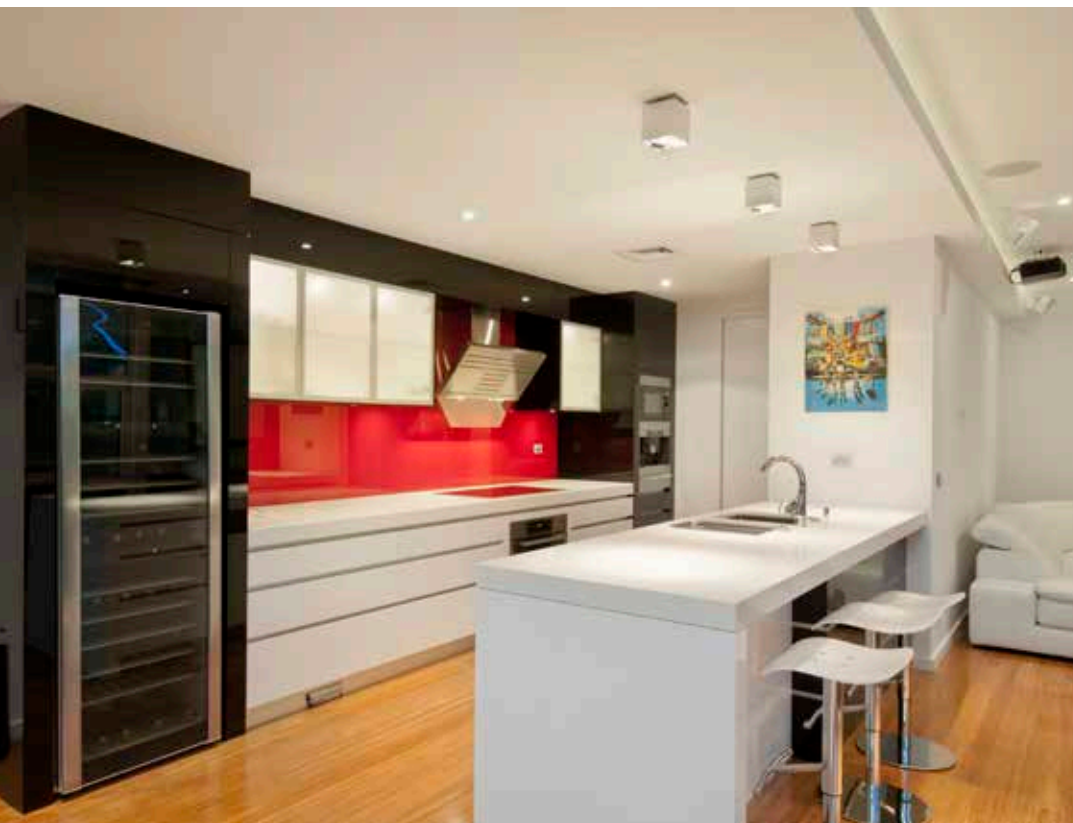
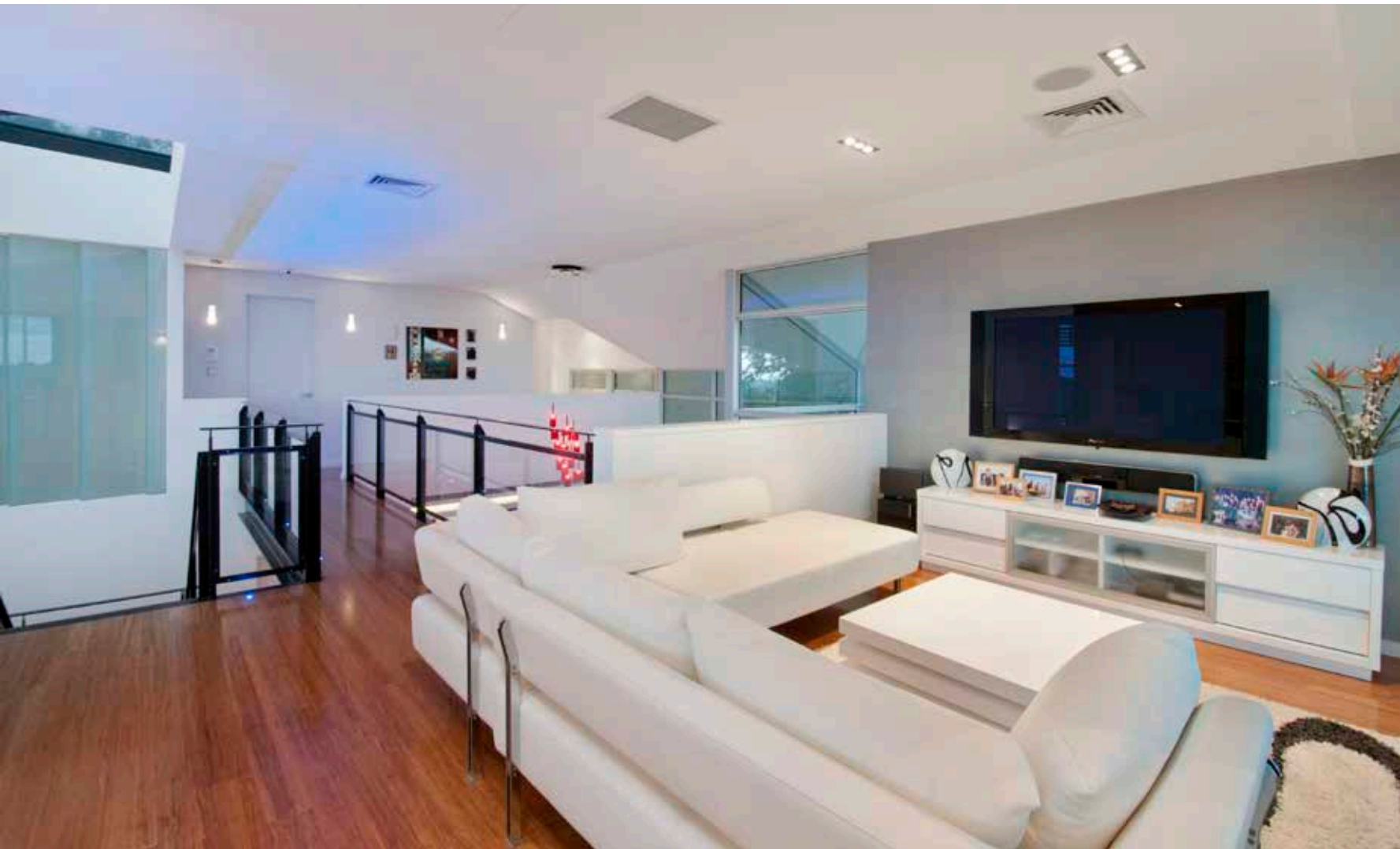
The owner expressed a strong wish to build something a little different and had even drawn a sketch of the house he envisioned. It was not the traditional approach of a square building – following the property's boundaries.

Instead, a triangular form emerged from the initial design sketches so that the open-plan house, built on an upward sloping block, is shaped like an arrow, capturing the sun and pointing towards a spectacular view of the city skyline.









A vaulted ceiling comes down from the glass roof to act as the central node of the house, helping to link the main outdoor entertaining area with the internal living areas. The walls, except for the rear, are essentially glass, providing a luminous aspect to the interior and framing the views. The angular nature of the design lends itself to a sense of openness and space in the four separate living areas as well as in the four bedrooms and study.

The open-plan design makes an easy connection to the kitchen, where a floating bulkhead inverts the idea of a platform. The dining area is raised, and part of the roof folds down to allow for summer dining. Several steps lead into the front living area from the main entrance. This blends and tempers the cool, modern interior and creates the calming connection with the outside garden and decking as the owner requested.

This Arch:10 home has several green initiatives that include solar photovoltaic roof panels to supply power and temperature control, and large underground water tanks to provide garden irrigation and water for the toilets. The extensive glass areas are built of high-performing, double-glazed Low-E glass.



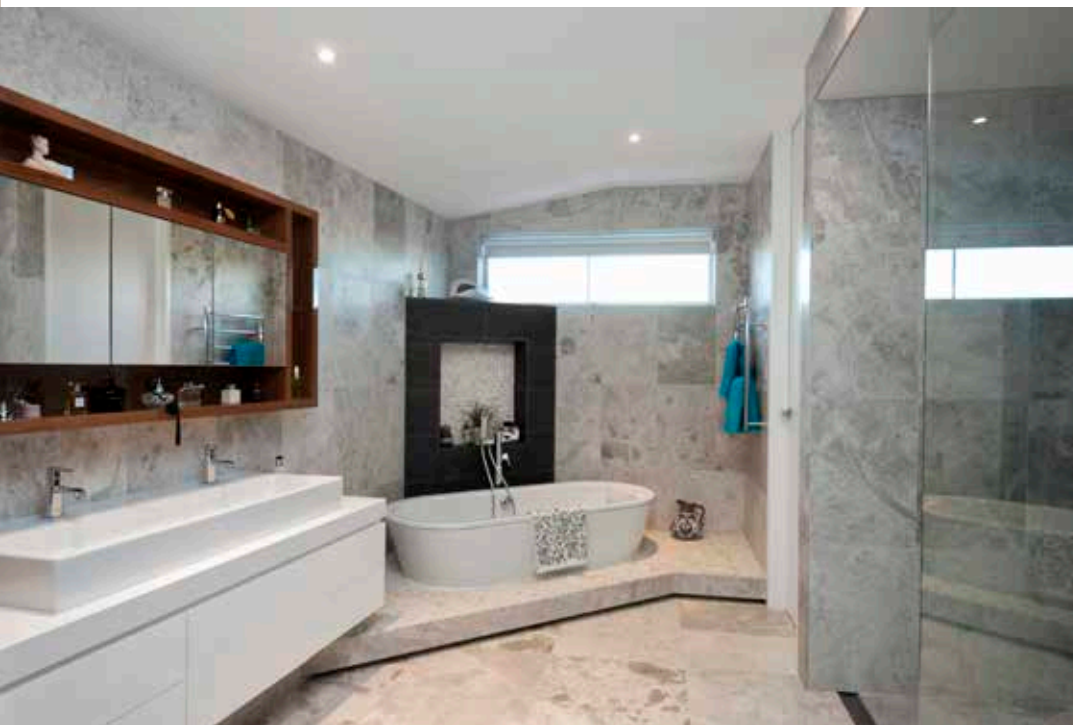
## Echoes of sea and sky

The design intent was paramount when building this contemporary, two-storey 47-square home on Beach Road, Black Rock.

The owners desired a home reminiscent of the white houses and rooftops nestled in the mountainous coastal regions of the Mediterranean. They also wanted to maximise the superb views of ocean and sky without compromising neighbours' privacy and amenities.

A predominantly white, modern exterior is the result, with a bluestone wall entry that hints at the home's Melbourne roots. Horizontal sharp-angled lines give a weightless, suspension-like quality, so the home appears to be floating.



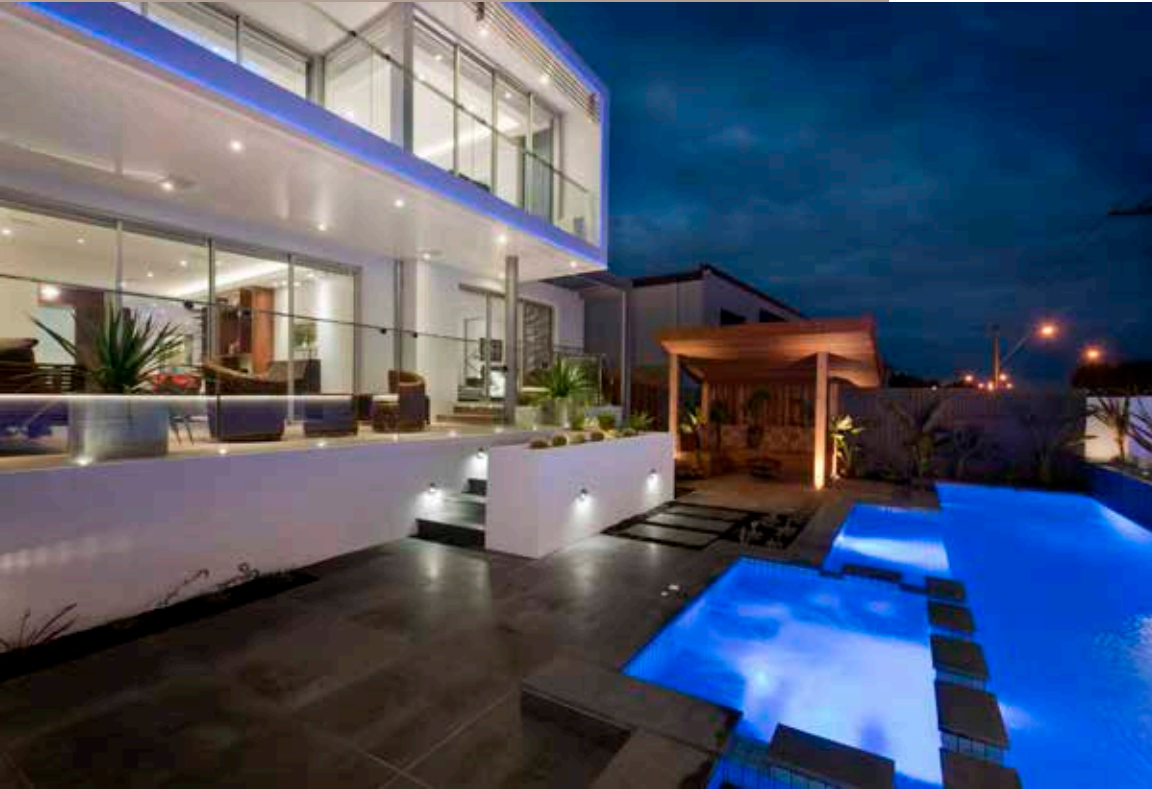


The uninterrupted views of the city skyline and Port Phillip Bay are framed and brought right inside, with living areas designed to make the most of this 180-degree panorama. The desire to capture these views required a unique form and layout. The four-bedroom home has a two-car garage, a basement theatre and a three-level lift that accesses each floor.

Spacious, light-filled interiors feature rustic earthy textures, a burst of natural timber wall cladding and travertine-tiled floors.

Several green initiatives are also included. High-performance, Low-E glass double-glazed windows naturally keep the house cooler in summer and warmer in winter. Air-conditioning is linked to a C-Bus monitoring system to keep the temperature steady.

Architecturally decorative exterior louvres contribute to the cooling and distinctive appearance of this seamless Mediterranean-inspired home.



ARCH:10's wealth of experience and expertise in design, construction and project management, ensures that total value management is provided in all stages of the project life cycle from concept to completion.

The ARCH:10 project management service ties together the three key areas of your property development process:

- Design and Cost Planning
- Pre Construction Services
- Construction

to ensure your project is delivered to your expectations, on time and on budget!

**MBA Awards**

- Winner of Best Custom Home \$1M-\$3
- Nominated Master Builder of the Year 2012
- Nominated Young Builder of the Year 2012



600 Waverley Road,  
Malvern East VIC 3145

P 9530 4910

[arch10.com.au](http://arch10.com.au)

[david.filice@arch10.com.au](mailto:david.filice@arch10.com.au)



# ENGLEHART HOMES

Englehart Homes has an unsurpassed reputation as a leading builder of both luxury project and individually designed custom homes.

To date, Englehart Homes have been awarded over 100 Building Industry Awards, including the HIA Professional Builder of the Year, Master Builder of the Year, The Age/D&B Victorian Business Award for Building and Allied Services, MBA Master Builder of the Year, National Recognition for Outstanding Achievement in Energy Efficient Homes, Bi-Centennial Home of the Year, and Inaugural 1984 Low Energy Home Award, clear testament to the enduring quality and master craftsmanship of the Englehart Homes team.







Whether it's the grandeur of a French chateau, or the nobility of a Parisian residence, La Provence by Englehart Homes is an impeccably designed home that you will fall in love with.







From the street front, four bold yet elegantly tapered classical columns conspire to showcase the stately entrance to this home. Guests approach through the wrought iron entry gate, and traverse Bluestone sawn finish paving towards the fanlight front door. Above, a Juliet balcony awaits, replete with customized wrought iron cresting. Beautiful French casement windows set with classic mouldings complement the facade, and complement the shingled slate roof. This statement home can't help but impress and charm.

On entry, a soaring foyer of freestanding and engaged columns draws you towards the formal living area. The room is grandly adorned with a marble fireplace, glassed cabinetry, French leadlight casement windows, and decorative cornices and moulded ceilings.

Look left and you catch a glimpse of a handsome and generous study/guest room with built in shelving and storage. To the right, a luxuriously appointed powder room/guest bathroom including marble, a frameless shower and adjoining Caesar stone laundry with ample storage and direct access to a patio.

Discreetly located beyond the main mirrored foyer is a vestibule allowing secure internal access to the garage and lift.

The centerpiece of La Provence is undeniably the curved stairway, complete with custom-made heart-shaped wrought iron balustrading, sweeping upwards to meet the balcony that enables access to the three large bedrooms and ensuites. A leadlight dome skylight inlaid with 1260 individual pieces of colored glass creates a stunning focal point, flooding the house with natural light.

Beyond the staircase, French doors reveal a vast kitchen and entertaining space. The European-style kitchen is complete with huge island bench, ceiling canopy and soft-closing cabinetry. Concealed is a butler's pantry and service area with marble preparation areas, an in-built wine rack, large fridge and storage.

A sweeping curved window wraps around the dining area. The adjacent European-style loggia, or 'outdoor room' with square colonnades, molded plaster ceiling, sawn Bluestone paving and el-fresco kitchen, plus outdoor TV and audio, all complement a stunning 11.5m tiled wet edge pool. The pool is accessed from bi-fold doors in the living area, and can also be seen from the massive home theatre room.







The Saville has been designed specifically with the Australian climate, lifestyle and landscape in mind. Dramatic, distinguished, stylish and substantial, this home is destined to become an "Australian Classic."

Influenced by the architecture and vernacular philosophy of Frank Lloyd Wright, The Saville is customised to our way of life. The design is classic, contemporary, luxurious. Sweeping horizontal lines contrast with wide sheltering eaves, an expansive entertaining loggia, and statement blade walls, creating a striking street appeal.

Both impressive and timeless, the Saville evokes permanence and great integrity has been invested in the details. Indoor and outdoor living spaces blend seamlessly, in harmony with our modern entertaining lifestyle.

The front of The Saville offers an impressive lobby, square-pillared study, formal living area with high vaulted ceiling, powder-room, hotel-suite proportioned master bedroom, resort-style ensuite and double dressing rooms.

The concealed sliding door in the middle of the home opens to an expansive kitchen area, dining and living area. Combined with the adjoining loggia, the inside-outside room doubles in size. An extension of the home, the 'outdoor room' maximises your entertaining space, and is an irresistible place to eat, socialise and relax.



The Saville is set to create a new precedent in luxurious, classic Australian design. With a number of design options available to you, along with Englehart Homes design flexibility, The Saville can also be tailored to perfectly suit your needs.

Every Englehart Home built incorporates innovation with proven design principles and environmental awareness. Our management system ensures all our 'Everest-high' standards are achieved, and that your requests, whims and wants - from our first meeting, right through planning, construction and after-residence service, are all carried out with a minimum of fuss.

Englehart Homes are passionate about the end result, our one-to-one personal contact with you, our tradespeople and our suppliers is exemplary. An Englehart built home is a home constructed with the knowledge and peace of mind that every facet will be undertaken to a standard few other builders can hope to match.

Englehart Homes is a Member of both the Housing Industry Association and the Master Builders Association.

**Display Homes now open**

La Provence – 289 Belmore Road, Balwyne North  
 Saville – 25 Belmore Road, Balwyn North



796 High Street, Kew East, VIC 3102

P 9810 2800

F 9810 2810

[engleharthomes.com.au](http://engleharthomes.com.au)

[info@engleharthomes.com.au](mailto:info@engleharthomes.com.au)



# Gracious Style

This magnificent French-Provincial home in Bayside Melbourne exhibits the singular care that Norton Homes provides for its clientele. This house is designed to accommodate the flexible and busy lifestyle of a modern family, yet its gracious style still blends into the historic Bayside area.

A traditional high pitched slate roof was requested so that the front elevation has the look of a single-storey home. A basement was excavated to allow maximum use of site space. Wrought iron fencing catches the eye from the street and the featured fence pattern is repeated on window boxes on the front entrance, upper back balcony and rooftop balustrade. A splendid full grown palm tree was transported from South Australia as a front garden feature that complements the seaside location of this romantic house.





Inside is luxurious comfort and convenience. The north-facing living area with its parquet flooring, and the spacious plush-carpeted master bedroom, are on the ground floor while the children's bedrooms, all with en suites and walk-in robes are upstairs. Stately high ceilings with elegant cornices and fireplace enhance a comfortably formal living room.

All rooms overlook the pool and surrounding landscaped gardens. Downstairs, French doors open to a heated and tiled entertainment area with steps leading into an inviting pool area. Meticulous design with exceptional finishes complete this elegant home.







In contrast, this cutting edge two storey townhouse on a beachside corner in Black Rock, is focused around a central palazzo courtyard with a resort-style swimming pool accessible from both floors. A striking Red staircase outside descends from the central Alfresco area with a louvered roof. All rooms over look this central courtyard with a sense of relaxation.

Design, comfort, and care for the environment were major concerns in building this dramatic contemporary residence.





The double glazed Low E glass windows and huge central courtyard capture every ray of light, while the inspirational addition of lightweight Alucobond screens allows winter brightness and excludes the hot summer sun. The architect himself lives in this superb three-bedroom home. Each luxury bedroom has its own en suite, while a separate powder room caters for visitors.

The wooden entrance opens to spotted gum flooring inside, contributing to the natural

feel of an inviting home. A sleek, white kitchen breathes elegance. The creative design surprises with a stained timber feature at the top of the carpeted winding stairway that leads to streamlined living spaces.

There is zoned living for reduced heating and cooling, as well as underground water tanks.

This is a stunning quality home built for a sophisticated lifestyle.





This home in East Brighton was a finalist in the 2012 HIA Excellence in Housing Awards. It is a single-storey contemporary residence with an exceptional external design element showcasing elongated windows and an unusual roof, front-pitched with a flat back.



Norton Builders, a boutique design and construction company based in Black Rock, Melbourne, is passionate about its individual service. Norton understands that every homeowner is different. As a family-owned business for more than five decades, Norton prides itself on creating homes that are distinctive and innovative and reflect the personal needs and styles of its clients. Its range of fine new homes feature exceptional designs, unparalleled finishes with exemplary client care.

Inside, bluestone flooring, stone bench tops and striking cabinetry stand out against the solid white walls that make a superb backdrop for the modern timber furniture and state-of-the-art fittings that contribute to this welcoming, luxury, open-plan home.

The kitchen is the hub. European appliances and the feature island bench make for easy living, as does the most useful separate scullery and walk-in pantry. Full height aluminium doors integrate inside and out, and well-placed outdoor lighting creates an atmosphere in the landscaped alfresco area making it ideal for entertaining.

Part of a Japanese Zen garden is visible from the master bedroom with its floating bedside tables, and from the stone bath in the marble-walled bathroom. A simple bamboo water feature trickling over black pebbles creates a sense of tranquillity. This is a house for relaxation and harmony.



92 Bluff Road, Black Rock, Victoria 3193

P 9598 8464

F 9598 9291

[nortonbuilders.com.au](http://nortonbuilders.com.au)

[info@nortonbuilders.com.au](mailto:info@nortonbuilders.com.au)



# Luxury and style

Two very different styles of beautiful homes showcase the talents and flexibility of the team at Rycon Building Group.

A classic French provincial-style residence at Balwyn North breathes elegance, style and quality, with extra-fine acrylic render, double-glazed casement windows and decorative mouldings to the external windows and doors.

Splendid wrought-iron gates open from the street on to a formal landscaped garden. This eye-catching architectural theme is then continued with wrought-iron balcony surrounds and front entry door. Step inside and a skylight illuminates the wrought-iron balustrading of the curved stairway.







The orientation of this superb residence can be appreciated on entry – a flood of natural light draws the visitor towards the seamless elegance of a grand formal living area with its high ceilings and fireplace. An open-plan family, dining and kitchen area, with European oak blocked flooring, opens on to a paved pool area. European oak parquet floors, classic decorative skirting and architraves add to the ambience and luxury.









The bedrooms nestle upstairs, each with its own en suite bathroom complete with marble benchtops and frameless shower screens. The majestic main bedroom offers views of the Melbourne skyline.



Inside boasts American oak floors and a kitchen that would delight the most fastidious chef. There is even a separate butler's pantry with a sink. The carpeted, timber-panelled bedrooms are upstairs, with a large en suite to the master bedroom. This upper level, with treetop views, has a cosy, relaxed feel.

This is an exceptional house designed and built to fit into its environment on a sloping block. Every room has a window or a remote-controlled skylight to provide a view of surrounding gum trees.

Quite different in style, but with the focus still on ultimate luxury, this home is an ultra-modern version of a timeless, traditional weatherboard residence.

This weatherboard home, four-bedroom entertainer is a private oasis, with a mosaic-tiled infinity pool, 140mm ironbark decking, 300-year-old recycled timber posts and large alfresco area with an immaculate outdoor kitchen and bar. Amid the landscaped gardens sits an inviting cubby house.

**RYCON**  
BUILDING GROUP

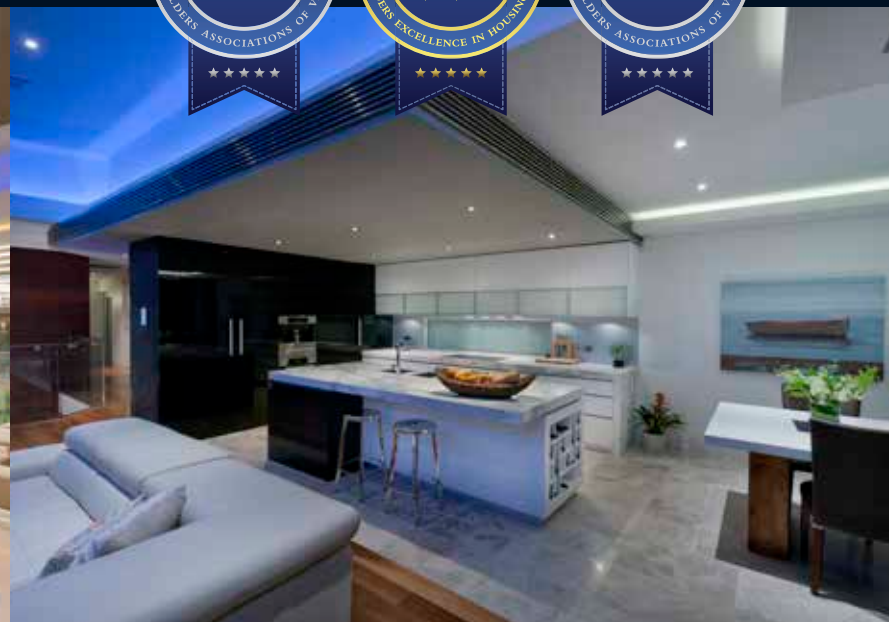
Suite 8/14 Albert St  
Blackburn Vic 3130

P 9894 1500  
F 9894 1577

[ryconbg.com.au](http://ryconbg.com.au)  
[info@ryconbg.com.au](mailto:info@ryconbg.com.au)



ARCH:10 specialises in the design and construction of high-end residential developments, from single dwellings to medium density housing and apartments.



Contact us today to discuss the plans for your next dream home or development project and experience the superior quality and attention to detail provided by the team at ARCH:10.

[www.arch10.com.au](http://www.arch10.com.au)

Daniel Filice | EMAIL: [daniel.flice@arch10.com.au](mailto:daniel.flice@arch10.com.au) | MOBILE: 0407 954 373





# YARRA VALLEY HOUSE

.stevehansondesign.

When the owners, Noel and Chris, came to me, they had purchased a property with one of the most spectacular and exposed building sites in the Yarra Valley, with 330° views and the land falling away steeply on all sides. The brief was to design a house that captured the views, was energy efficient, had zoned guest rooms, allowed for outdoor entertaining on windy days and ideally used rammed earth somewhere. To achieve all these goals I designed a house with two wings, the northern one for living and the southern one for sleeping. A rammed earth spine runs through the middle of the house joining the two wings with a connecting gallery. The result is that the views are captured north to the Yarra Valley, southwest to the Dandenongs and east down the valley towards Warburton. The large roof cantilevers provide shade in the summer without interrupting the views and stretch the house across the site to settle it down onto its hilltop site.







CITY

.stevehansondesign.

STEVE HANSON

I have been designing and building houses for almost 30 years. My primary focus is on creating site-responsive houses that are much more than just a roof over clients' heads. While material selection, quality workmanship and finishes are important, it is the function and appeal of the designed spaces that separates a good house from an ordinary one. If the spaces are well designed, a house can be built out of simple materials and still be a joy to live in.

EMAIL [info@stevehansondesign.com.au](mailto:info@stevehansondesign.com.au)

WEB [www.stevehansondesign.com.au](http://www.stevehansondesign.com.au)

PHONE (03) 5964 9211



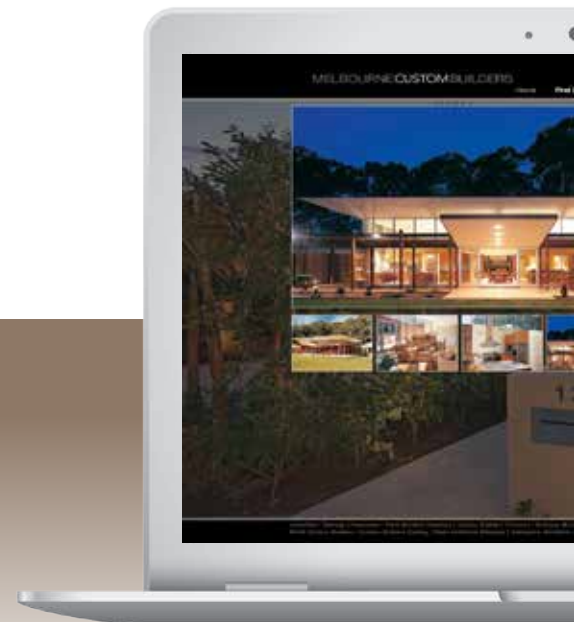


COUNTRY



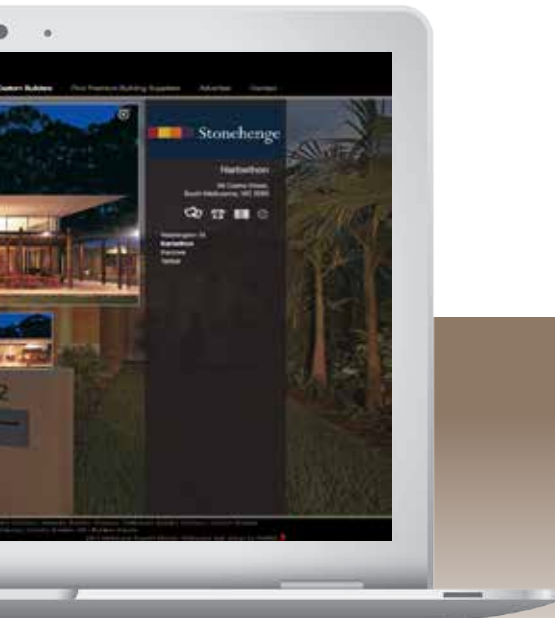
COASTAL

# See more of Melbourne



If you like what you've seen, there's even more to see on our Melbourne Custom Builders website. More stunning award winning homes and more photos all on one easy to use site.

's best builders...online



[melbournecustombuilders.com.au](http://melbournecustombuilders.com.au)



Picture courtesy of Bellemore Homes



Designer Interiors

# Sleek Contemporary Design...



[www.sovereigninteriors.com.au](http://www.sovereigninteriors.com.au)

- Complete Interior Design Service
- Imported Italian Furniture
- Lighting
- Sculptures
- Artwork
- Glassware
- Accessories
- Window Treatments



**GOLD COAST SHOWROOM**

84 Upton Street Bundall Queensland 4217

Email: [info@sovereigninteriors.com.au](mailto:info@sovereigninteriors.com.au)

Tel: 07 55 920 161 Fax: 07 55 920 383

*Sovereign*  
INTERIORS



# Bespoke art advice

In today's "buyers" market, receiving the best art advice is crucial and that involves being guided through the three basic rules for collecting art.

- Love the Picture.
  - your true investment is realized every time you receive pleasure viewing it
- Try and love a work by a famous or up and coming career artist.
  - art can be an asset if chosen wisely
- Ensure the work is a good and typical example of that artist's oeuvre.

Finally there is a forth rule . . .

- When you do find that 'right' piece, **find the money**.

Paul Auckett



photo courtesy of [cherryandme.com](http://cherryandme.com)





**look art consulting**

[www.lookart.net](http://www.lookart.net)  
[paul@lookart.net](mailto:paul@lookart.net)  
+61 419 309 321

# ZOKK FURNITURE

High quality, bespoke furniture  
assembled and finished by hand



[www.zokk.com.au](http://www.zokk.com.au)

Showroom. Factory 15, 350 Settlement Road, Thomastown Vic 3074

Mob. +61 (0)4 0363 8848

Email. [zoran@zokk.com.au](mailto:zoran@zokk.com.au)



Zokk Furniture's owner Zoran Barbesoski completed his apprenticeship in Rorschach, Switzerland, and has over 15 years experience in cabinet making and interior design. Swiss and European qualities are mixed with contemporary Australian style to form a unique new take on furniture design.

In 2005, he established Zokk Furniture. Zoran's intentions are simple: each piece of furniture is handcrafted to the highest quality, using traditional woodworking techniques and the very best materials. Zokk's commissions range from free-standing furniture to bespoke fitted kitchens.

Zoran works closely with each customer to design a piece of furniture based on their exact specifications. He likes to visit them at their homes to create a design specific to his customer's personal aesthetic and environment.

"I like to build furniture that I'm proud of; pieces that will last forever," he says. Because of their originality, the unique items are all different and pleasing to the eye. Being made by hand and not machine, they reflect the individual characteristics of the wood.



‘The unique items are all different and pleasing to the eye’





Zokk Furniture features in the second edition of *Handmade in Melbourne*, published July 2010.





**BUSBY HOMES - IT'S ALL ABOUT YOU**  
**SPECIALISTS IN CUSTOM HOME BUILDING**

Web: [www.busbyhomes.com.au](http://www.busbyhomes.com.au)  
Ph: (03) 9761 5444 • Email: [enquiries@busbyhomes.com.au](mailto:enquiries@busbyhomes.com.au)







---

Who better to advise you on your choice of mattress or pillow than a health care professional.

---

*Call and book your complimentary assessment with our specialist today!*

back to **sleep**<sup>®</sup> head office and showroom:

276 Canterbury Road  
Surrey Hills Victoria 3127  
1300 854 557

Additional showrooms in:

Victoria  
Queensland  
New South Wales

back to **sleep**<sup>®</sup> specialise in:

- Mattresses
- Bases
- Pillows
- Protectors
- Sleeping Aids
- Massage Chairs
- Ergonomics

**1300 854 557**  
backtosleep.com.au



back to **sleep**<sup>®</sup> has your needs covered!



### *Lifestyle*

Whether you read in bed or catch up on the days events with a little bedtime television, our adjustable base provides back support at a touch of a button.

### *Advice*

Our specialists are health care professionals *not* sales people - we understand the bodies need for correct support, the right comfort and quality sleep.



### *Size*

We cater to your entire family's needs - from looking after the kids in a supportive single to providing that extra space in a king size.



**back to sleep**<sup>®</sup>  
mattress & pillow specialists



*The bathroom typically features a freestanding bathtub and a vintage vanity. A trolley or stand, used to store towels and other toiletries is a practical and stylish way to create a French theme.*

A photograph of a room interior. In the foreground, a vase of pink roses sits on a wooden table. The background features floral curtains and wood-paneled walls. The title 'French Connection' is written in a large, elegant script font on the right side of the page.

# French Connection

By Ruth Thornley

Talk about things French and words like elegance, chic, style, grace and sophistication spring immediately to mind. So the recent trend to French-inspired interior design comes as no surprise as homeowners seek to create relaxing, calm and stylish interiors. In an era of computer technology that can often alienate, people are looking for a more comfortable lived-in feel, one that is elegant and which mimics some of the most popular furniture designs in French history.

The canvas of the French-styled home is a soft, neutral backdrop that allows the details and textures of a room to shine. When it comes to French-inspired decorating, less really is more.

Discipline is required to keep saying "non" to everything as you hold out for the right time to say "oui" to what you really want. This way, you will be surrounded only by things you love. Showcase these items, such as a glass-based lamp, a pile of books, and fresh flowers. Keep clutter at bay.



*A French-style daybed fitted with neutral-toned linens and cushions is an elegant, yet classical way to turn a vacant space into a calm and stylish retreat.*

Linen is a staple of French decorating. Not only does it have a wonderful texture, it keeps getting better with age, softening each time it is washed. For the dining room kitchen and bathroom, look for exquisite luxury products from quality manufacturers that will not only look and feel exquisite but stand the test of time.

Have your curtains made to measure in natural fabrics, such as a rich silk or a classic, airy muslin. Be generous with the proportions. Let your curtains billow in the breeze or softly pool at the floor, creating a relaxing and romantic atmosphere.

When it comes to furniture, the French are masters of mixing old with new and knowing what to spend money on. Spend on the important pieces and don't be afraid to select furniture that looks like it has passed the test of time. "Distressed" furniture, chosen wisely, is chic and stylish. The visible knocks and bumps add character to your décor, reminding us of another age when craftsmanship was everything. Look for furniture to cherish, finished in traditional French colours or natural timber stains.



Ruth Thornley is an interior designer based in Melbourne and also the proprietor of Maison Living which sells high-quality French-style furniture in a variety of hand-painted traditional colours, distressed and polished natural wood finishes and decorator items. **Items can be ordered online at [www.maisonliving.com.au](http://www.maisonliving.com.au).**



*Hemmingway Dining Table  
298cm Price: \$2,310.00  
available from Maison Living,  
Swan Street, Richmond*

*The French set a beautiful table every day, paying particular attention to the style of furniture and the dining setting. The table is used often, so choose a "distressed" one and dress it with beautiful linens that bring home the colours of Provence.*



quality  
handmade  
plaster products

**Abbotsford** 18 Flockhart Street Abbotsford VIC 3067 **T** +61 3 9427 9966 **F** +61 3 9428 0527 **E** sales@vitale.com.au  
**Essendon** 88 Albion Street Essendon VIC 3040 **T** +61 3 9375 4666 **F** +61 3 9370 8362 **E** sales@vitale.com.au

Vitale master craftsman recreating  
a plaster moulding from a  
100 year-old church



**F.VITALE & SONS**  
Quality Plaster Products

To see our full range of  
decorative plaster products visit

[www.vitale.com.au](http://www.vitale.com.au)

# STUNNING RANGE OF BOTH TRADITIONAL AND CONTEMPORARY CRYSTAL CHANDELIERS.

· CONSULTANCY SERVICE AVAILABLE · CUSTOM-DESIGNED & MADE TO ORDER  
MELBOURNE'S ONLY CHANDELIER SPECIALIST



## House of Chandeliers

388 BURKE ROAD, CAMBERWELL VIC 3124 · TEL +61 3 9809 4411 · FAX +61 3 9809 4411 · EMAIL - OKSAN@TPG.COM.AU



*Every home needs a piano...*



## AUSTRAL PIANO WORLD

*"the true music professionals"*

Ph: (03) 9497 2616

245-247 Lower Heidelberg Road

East Ivanhoe Victoria 3079

[www.pianoworld.com.au](http://www.pianoworld.com.au)

**KAWAI**  
THE FUTURE OF THE PIANO

**PETROF**  
PIANOS SINCE 1864

**C. BECHSTEIN**

**YAMAHA**

**W. HOFFMANN**

**Roland**

Huge showroom with one of  
Melbourne's largest ranges of Grand  
Pianos from the world's leading brands



# Art for Hire

Stunning contemporary artwork without the capital outlay



**Sculptura® is the leading supplier of corporate commissioned art in Australia. Sculptura® artwork can be found in leading hotels, corporate enterprises, as community landmarks and in some of the most exclusive private homes in Australia. Now Sculptura® offers you the opportunity to obtain a bold and sophisticated statement piece of art on hire terms.**

Art Hire provides many benefits including:

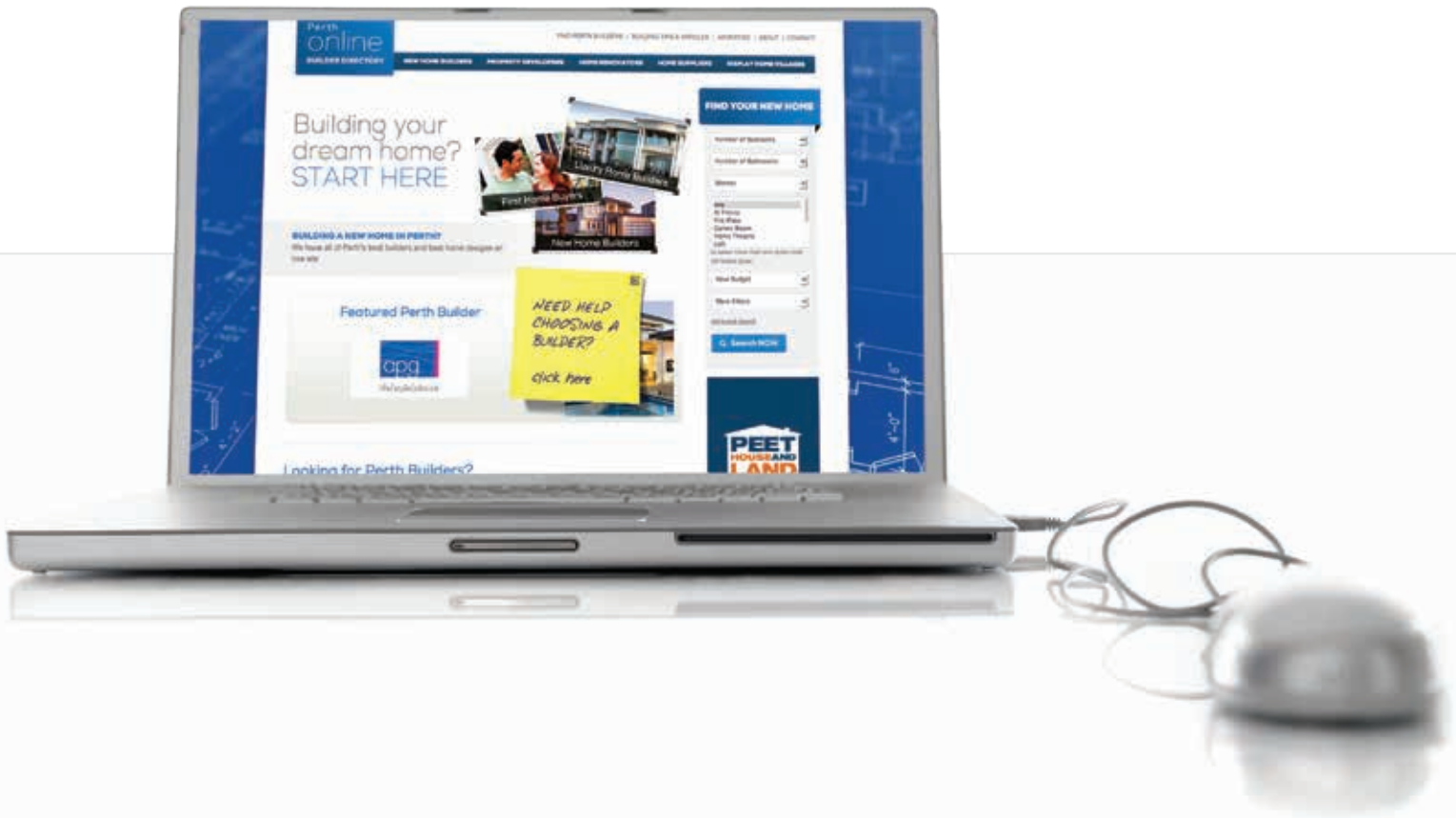
- No capital outlay
- No depreciation or asset maintenance
- Option to change artwork with décor change etc
- Free delivery to all major Australian cities


From striking stainless steel to extraordinary corten artwork, Sculptura® artwork add elegance and class to any building, or landscape.

# SCULPTURA®

Art Hire Enquiries: PH +(61) 3 9824 5555 email: [sales@sculptura.com](mailto:sales@sculptura.com)

[www.sculptura.com](http://www.sculptura.com)





# Choosing the best wines to cellar

Many custom-designed homes are now incorporating built-in wine cellars. There are great pleasures to be had from starting your own wine cellar, but a few pitfalls to be wary of, too. The Wine Society's Adam Booth explains how to avoid the latter and see more of the former.

Wine improves with age. We've all heard it, but as anyone knows who has ever been disappointed by that special bottle that's been hiding under the bed, there is a little bit more to it than that. The choice of cellaring location is critical, but no more so than the wine itself

Winemakers know that the majority of what they produce (as much as 90% according to some market research) will be consumed within 24 hours of purchase, so they make wines accordingly. Put these wines in your cellar and you'll only be storing up disappointment. There are plenty of varieties too that are simply better suited to early drinking (think sauvignon blanc, for one very popular example). Lay them down for a period of years and all you'll do is see the vibrant flavours fade and die.

As a result, there is a sea of wines that should be enjoyed while young and fresh and only a relative handful that will reward our patience. But it is in that handful of wines that the real magic lies. Wines that are made to age – and that have the qualities to match these lofty ambitions – deliver a more complex and interesting experience. It is an experience that develops over time, with each bottle opened showcasing its qualities at that particular moment, and asking the wine lover to assess whether the wine has hit its peak.

The challenge is to sort out the sprinters from the marathon runners. When starting a brand new cellar, how can you know which wines have the staying power?

There are never any guarantees of course – variation from vintage to vintage, even from bottle to bottle, ensures that; but there is plenty you can do to turn your cellar into a treasure trove rather than a graveyard for lifeless wines that have long since given up the ghost.



## Let The Wine Society help you start your cellar!

The blind tastings conducted by our tasting panel make us Australia's only truly independent wine selectors. Combine this with 67 years of experience – and a not-for-profit co-operative status that allows us to focus solely on sourcing the best wines for our members and you'll find no one better to guide you on the next stage of your wine journey.

Our friendly wine advisers are the best in the business and their brief is simple – to match the right wines with the right people. See what they can do for you and learn more about Wine Society membership by calling 1300 723 723 or visiting [www.winesociety.com.au](http://www.winesociety.com.au).

**Ask about our Cellaring Six Pack, a wine plan specially designed to help you build your cellar!**



Most wine lovers start by cellaring red wines and there is good sense in this. The tannins that are found (in varying quantities) in red wines are key factors in their potential longevity. Tannins, which in a young wine may be quite off-putting, provide the structure that allows the wine to age gracefully. As they break down, the wine gradually softens to reveal the complex and exciting secondary flavours that make aged wine so exciting. When selecting reds, look for wines with firm tannins as well as intense fruit flavours and good acidity.

White wines don't contain the tannins of their red counterparts, so acidity, which acts as a natural preservative, is much more important, keeping the wine in perfect condition as the secondary flavours begin to develop. Of course, you cannot simply pick the most acidic wines and hope for the best; the acidity must be in balance with the rest of the wine's flavour profile.

Balance should be at the forefront of your mind when choosing any wines for your cellar. Lay down an unbalanced wine for a few years and all you'll end up with is an older unbalanced wine. If anything, its youthful faults are likely to be exaggerated with age.

With these simple principles in mind, you can begin to make your selections with confidence. Big, bold red varieties that are naturally high in tannins, such as cabernet sauvignon and shiraz, are a great place to start and it's no surprise that these varieties dominate many Australian wine cellars. Some pinot noirs will age well too, but success varies, so while it is definitely a variety worth including in your collection, it is worth taking advice if this is an area on which you wish to focus.

A good cellar will be varied, with wines for all occasions, so it is important that whites are not neglected. Rieslings live long and exciting lives, gradually taking on rich, toasty and oily characters that beautifully complement the citrus notes of their youth. Chardonnay too has potential, but comes with the same caveat as pinot noir, so should be treated with caution. There is, though, another white wine that deserves space in every Australian wine cellar.

Hunter Valley semillon is one of Australia's great contributions to wine. Unique in style, no other Australian wine speaks as clearly of its place of origin – and it ages beautifully too. Naturally high in acidity, it is a wine with two distinct personalities. For the first couple of years after bottling, it is typically light and crisp and pale in the glass, with lemon and lime aromas and flavours. Then after a period of two or three years in hibernation, when it can appear dull and lifeless, it emerges with a whole new layer of complexity. Colour, texture and flavour all become deeper and richer, with honey and toasty notes enhancing the citrus palate.

It can be a stunning transformation and a wonderful demonstration of the joys of cellaring wine, as you follow the wine from frisky youth, through its sullen teenage years to fully-fledged adulthood. Just make sure you buy at least a few bottles of each wine you wish to cellar, so that you can follow its development and still have some to enjoy when you're satisfied that it has reached its peak.





Picture courtesy of Atkinson Pontifex





Beautiful Kitchens  
& Bathrooms



# Timber in a tile

There is no denying the feeling of warmth that timber adds to a home.

However, many areas traditionally exclude timber because of moisture issues.

So here is good news – it is now possible to have the look and feel of timber throughout your home, even into wet areas, including showers.

Sound impossible? Not so. The latest in European styling is an exciting range of porcelain tiles allows you to do just that.

Exclusive to Lapege, the Nuance by FAP is a unique porcelain tile that provides a natural timber effect. Available in a range of tones, each tile in the collection is a smooth blend of shade, creating evocative, sophisticated effects that are original and natural.



The Nuance range comes in two modular sizes, with the long staves suitable for floors and walls.

A large variety of patterns is possible, from classic wooden flooring to more modern, creative solutions. The moment the staves have been laid, they look like they have been there forever. This is because a wealth of authentic detail, colour and naturally speckled textured surface allows light to play on it.

**NUANCE RANGE  
EXCLUSIVE TO LAPEGE**

# LAPEGE

28-30 Brunswick Street, Fitzroy, VIC 3065 • T 03 9419 8777 • [www.lapege.com.au](http://www.lapege.com.au)





Nuance offers the feel of wood where you would not normally expect it, even in the shower, where smaller mosaics are ideal for a sloping floor.

The Nuance range is on display at the Lapege showroom in Brunswick Street, Fitzroy.

Lapege is an exclusive supplier of many leading European brands. The showroom is more like a designer boutique than a typical tile store. On display is an exclusive range of stunning tiles, stone and mosaic products that Lapege supplies direct to the public, tilers, architects, designers, stone masons and builders.

# LAPEGE

28-30 Brunswick Street, Fitzroy, VIC 3065 • T 03 9419 8777 • [www.lapege.com.au](http://www.lapege.com.au)



This Toorak kitchen incorporates a combination of both modern clean lines and classic use of materials to compliment the elegance of this 1880's home.



## Bringing your dream kitchen to life!

Everyone's ideas of their dream kitchen differ according to both your own personal taste and perhaps the style of your home. AKL Designer Kitchens aim is to bring your ideas to life, no matter what they may be with both exceptional craftsmanship and a focus on customer satisfaction.

Founder, Adrian Lee has over 16 years experience in the industry and his philosophy for producing fantastic results for his clients is ensuring that all AKL staff are not only skilled craftsman but passionate about kitchen design. AKL staff are also kept up to date with the latest trends by attending both local and international trade shows, ensuring the best products and design techniques are used in your new kitchen.



The design process begins with an in-house consultation allowing AKL's skilled design team to get a feel for both the space and obtain a thorough understanding about your aims for the project. Throughout every project the AKL design team's objective is to provide each client with a bespoke, stress free experience while delivering the most luxurious and functional kitchen within the available budget.

On completion of your installation, each kitchen is personally inspected by Adrian Lee. AKL's commitment to delivering nothing but exceptional quality kitchens is reflected in the 8 year warranty provided to all clients.

AKL also design beautiful bathrooms and alfresco kitchens. Showroom by appointment only, please contact them on 1300 536 233.





Custom made stainless steel bench top with intergrated stainless steel splashbacks add to the sleek, modern lines of this contemporary kitchen



DESIGNER KITCHENS

MELBOURNE, VICTORIA

PHONE 1300 536 233 • [WWW.AKLDESIGNERKITCHENS.COM.AU](http://WWW.AKLDESIGNERKITCHENS.COM.AU)





## LAB COOKTOPS

Designed and crafted in Italy, the Barazza LAB & Select Collections redefine the integrated cooktop, with sleek, industrial-inspired lines and finishes that are as functional as they are beautiful. The preferred choice of Europe's most elite interior designers for more than 30 years, Barazza is renowned for timeless style, enduring quality and effortless performance. Barazza's sophisticated Italian style is reflected in the versatile LAB range of hobs, which perfectly combine form and function like never before.

# BARAZZA

**Victoria**  
208 York Street  
South Melbourne 3205  
ph: 03 8696 4000

**New South Wales**  
1E Danks Street  
Waterloo 2017  
ph: 02 8572 8500

**Queensland**  
94 Petrie Terrace  
Brisbane 4000  
ph: 07 3369 4777

**Western Australia**  
34 Walters Drive  
Osborne Park 6017  
ph: 08 9446 8255



THE DESIGNER'S CHOICE

[www.abey.com.au](http://www.abey.com.au)



## B\_FREE

B\_Free is the new modular programme of ovens, hobs and sinks. Designed to allow the user to combine the most varied cooking models whilst exploiting a wealth of functions, and obtained by mixing two very important ingredients, aesthetics and functionality.



# BARAZZA

**Victoria**  
208 York Street  
South Melbourne 3205  
ph: 03 8696 4000

**New South Wales**  
1E Danks Street  
Waterloo 2017  
ph: 02 8572 8500

**Queensland**  
94 Petrie Terrace  
Brisbane 4000  
ph: 07 3369 4777

**Western Australia**  
34 Walters Drive  
Osborne Park 6017  
ph: 08 9446 8255

  
THE DESIGNER'S CHOICE  
[www.abey.com.au](http://www.abey.com.au)

Original design. Superior craftsmanship. Enduring quality.



— THE —  
**ENGLISH  
TAPWARE**  
— COMPANY —

The English Tapware Company Ltd is a boutique company dedicated to providing the world's best kitchen & bathroom tapware, fireclay sinks, bathroom accessories, towel warmers and bathroomware to builders, architects, interior designers and everyone who loves their home.

We offer the luxurious Perrin & Rowe, Acquello and Hawthorn Hill brands.

We offer peace of mind by guaranteeing the quality of our products and offering a high level of service before, during and after completion of the project. All our products are made to fit the local plumbing regulations and certified to comply with Australian Plumbing Standards. This is our assurance that we are selling a product which you can legally and happily install. We provide a minimum five year warranty against any manufacturing defects.



We are fastidious about which products we sell and if we would not have them in our own homes, we would not expect you to put them into yours.

Our close relationship with our suppliers enables us to provide a bespoke service to our customers. *Let us know what you need and we will do what we can to turn your dreams into reality.*

**PERRIN & ROWE**  
MAYFAIR LONDON

Hawthorn Hill

**ACQUELLO**  
ITALIA

CONTRACT 0498 990 029

MELBOURNE 03 9818 1403

SYDNEY 02 9362 4736

NATIONWIDE 1300 01 61 81

[www.englishtapware.com.au](http://www.englishtapware.com.au)

Hot

Cold



# Superior design and innovation



Lava Sink Mixer 4\* 7LPM



Lava Basin Mixer 4\* 7LPM

---

**New Lava collection – Designed and Made in Australia**

Partaps Head Office: 25-27 Bellevue Crescent, Preston VIC 3072  
Telephone: 03 9484 0960 | Facsimile: 03 9484 0949

[www.partaps.com.au](http://www.partaps.com.au)

**par**  
TAPS



Argent is the stockist for Victoria & Albert bathwares.

Victoria and Albert create the finest freestanding baths in the world, baths that combine fabulous good looks with superior comfort. Every bath is made by mixing a rare volcanic limestone material exclusive to Victoria and Albert with resin, creating a bath that is seamless, rigid, warm to the touch and naturally white.



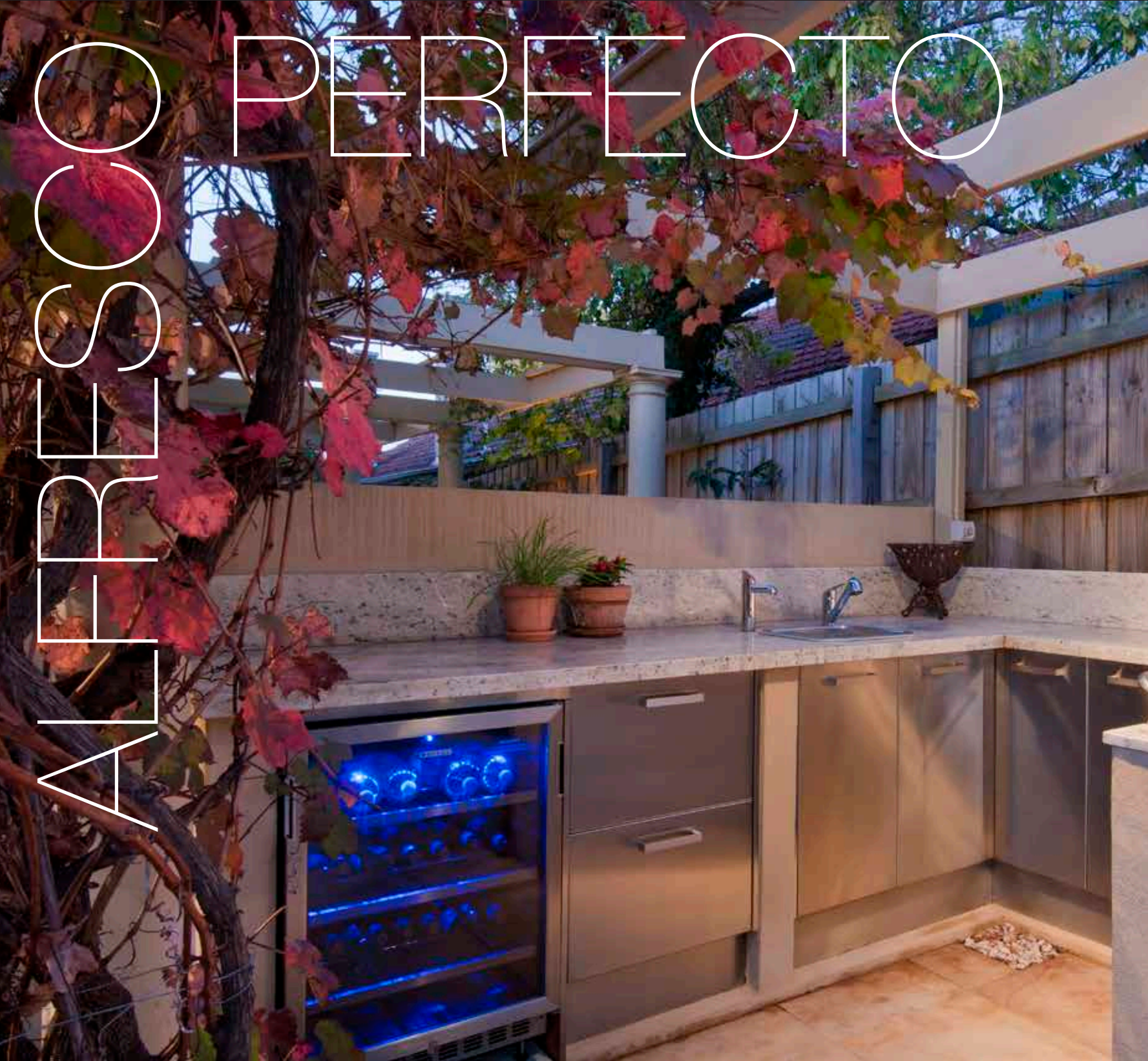
victoria ⊕ albert<sup>®</sup>  
volcanic limestone baths





Stunning Exteriors

SO  
PERFECTO  
S  
H  
E  
R  
A





**AKL DESIGNER KITCHENS ARE SPECIALISTS IN DESIGNING STUNNING AL FRESCO KITCHENS THAT ARE BUILT TO LAST**

HAVING PERFECTED THE 100% WATER AND WEATHER PROOF OUTDOOR KITCHEN UTILISING MATERIALS SUCH AS GRANITE BENCH TOPS, PVC CABINETRY AND UV RATED ACRYLIC DOORS, AKL ARE ABLE TO PROVIDE THE MODERN AUSTRALIAN HOME WITH A SPACE THAT NOT ONLY LOOKS FABULOUS BUT IS ABLE TO WITHSTAND THE ELEMENTS

AKL

DESIGNER KITCHENS

MELBOURNE, VICTORIA

PHONE 1300 536 233 • [WWW.AKLDESIGNERKITCHENS.COM.AU](http://WWW.AKLDESIGNERKITCHENS.COM.AU)

# Brighton Pools and Spas

Sunlight dances a slow waltz across the surface. Lazy ripples flow gently from the base of the tiled infinity edge. A glistening oasis awaits.

When your clients' home boasts canal frontage and a private mooring, expectations are naturally high. Engaged to design and install a pool and spa combination that liaised cohesively with the canal, Denis and Jay Gordon of Brighton Pools and Spas displayed their award-winning skills to create this monument to imagination, design excellence and customer focus.

In a competitive industry where there is no substitute for practical experience, Denis Gordon's 25 years of bringing outdoor areas to life through unique pool and spa designs is the cornerstone of Brighton Pools and Spas' success. Coupled for the last 13 years with the energy, passion and design flair of son Jay, the pair has further enhanced the family-owned business' strong reputation for creative and intelligent design in conjunction with superior construction and finishing.

The Brighton Pool and Spas team proudly provides personalised service and complete project management, working with a select group of qualified experienced pool builders and landscapers who share their commitment to quality, integrity and attention to detail.

Having won many industry awards over the years, including Best Lap Pool, Best Water Feature and Best Formal Pool, the team was well equipped to do justice to this stunning location. Designed and situated to offer maximum visual impact from both the house and the waterway, Brighton Pools and Spas executed a complex project that showcases an irregular shaped pool with its magnificently curved negative edge. Azure mosaic tiles accentuate the pool tiers and provide the richly coloured base that serves to highlight the sparkling water as a light breeze skims the surface.







brighton   
pools + spas





Wrapping around a large palm tree that the clients were keen to retain, the pool and landscaping is a delightful interlude between the canal and residence. A glass panel insert links the shimmering pool with an innovative sunken day bed area, a design element of which Brighton Pools and Spas is particularly proud. As regular entertainers, the clients love this use of space that maintains the clean architectural lines of the landscaping while creating a generously proportioned outdoor sanctuary for blissful relaxation.



The perfect geometry of the raised spa provides a counterbalance to the more organic lines of the pool. Glass inserts frame the spa waters above tiled walls and the visual deception of 'floating' stepping pads surrounding the spa creates an area that, in isolation, is simply beautiful. As a complement to the pool, the spa area provides the ultimate in luxurious and contemporary indulgence.







Come dusk, the mood of the entertaining area shifts to one of tranquil contemplation. A gentle glow emanates from the in-water lighting and strategically positioned LED lighting highlights the minimal plantings in and around the pool and spa. As the sun sets on the waterway, the man-made bodies of water provide a picture perfect reflection of the darkening skies.

Brighton Pools and Spas has ensured year-round use of this idyllic setting with the pool possessing both solar and gas heating. Designed for simplified maintenance and incorporating up-to-the-minute mechanical components, the team has endeavoured to minimise the time impost of a pool and spa so that their clients can enjoy the continued freedom of outdoor entertaining in this spectacular environment.

3/260 Wickham Road, Moorabbin VIC 3189

t. 03 9553 2011 | f. 03 9553 1955

info@brightonpools.com.au | [brightonpools.com.au](http://brightonpools.com.au)



# New generation of swimming pool & spa enclosures

## Benefits

- Extend your swimming season to 365 days
- Have an indoor or outdoor pool in minutes
- Reduce heating and maintenance costs
- Increase water temperature by up to 15°
- Keep fit and entertain your family
- Reduce chemical use and water evaporation
- Fully lockable for child/pet safety
- Customised European styling/quality
- Maximise lifestyle and property value
- Maximise your facilities and business revenues
- Finance available



Before



After

## Feature Project

Location - Toorak Vic

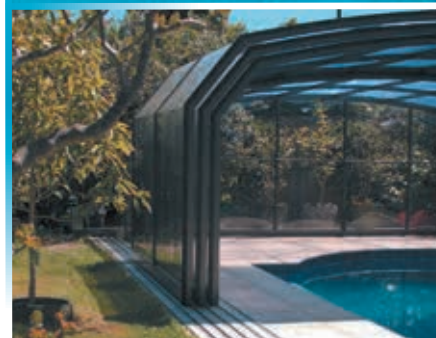
Model: Oceanic High

Dimensions: 14.8m x 6.9m x 2.55m

Polycarbonate: Clear compact sides/ends with blue twin wall roof

Doors: 1 main lateral sliding & 2 small (water feature)

*"The pool enclosure has made a huge difference in usability, maintenance time and solves water evaporation problems. Maintenance is less costly because you do not need as much cleaning gear and you don't need to use gas heating as much because it keeps the water warmer. TPEC's pool enclosure is easy to use and adds value to our Toorak home; I was very happy with TPEC's service."*  
Mr Robert Wong



Visit us on



As seen in



It's time to relax...  
& enjoy

For an obligation free solution please call 1300 658 285  
[www.thepoolenclosurecompany.com.au](http://www.thepoolenclosurecompany.com.au)

**BORAL CULTURED STONE**  
Build something great™



# Welcome to the new stone age

Stone has been loved through the ages; but its weight and cost has kept it out of reach of many – until now.

Introducing Cultured Stone®, a lightweight stone composite that has all the advantages of natural stone without the drawbacks.

With a versatility that extends from external feature walls to fireplaces and wine cellars, the beauty of Cultured Stone®, both indoors and out, is inspiring.

Discover more at [www.boral.com.au](http://www.boral.com.au)  
or call **13 15 40**

Boral is a registered trademark of Boral Limited or one of its subsidiaries.

BCC 11097 07.12









# Award Winning Exteriors

COS Design was formed in early 2000 by Steve Taylor and has since become one of Australia's most highly regarded and awarded design companies.

Steve and the team specialize in a professional design process from consultation to concept plans through to part or full working drawings, 3D modelling, tender management and contract admin/project management services.

Steve is now co-host of Australia's new garden series, Best Gardens can be viewed on Foxtel's Aurora Channel Tuesdays nights at 730pm. Episodes can also be viewed direct from their website.

Steve himself is a qualified builder and designer, and employing only highly skilled landscape architects and drafts people, the COS team ensure your project is completely with both expertise and style.

With his extensive construction experience, core engineering principals, and knowledge of local laws and building codes, overcoming challenging levels, access and environmental restrictions are Steve's specialty.



COS DESIGN™

LANDSCAPE / POOL / ALFRESCO / HOME

392 Burke Road, Camberwell VIC 3124 P 9889 3329 F 9889 3328

[www.cosdesign.com.au](http://www.cosdesign.com.au)





# Pool Design

The COS team specialise in custom designed living spaces that exude style and sophistication with an emphasis on clean lines, simple timeless palettes, well balanced structural elements and most importantly liveability.

All designs compliment and enhance the surrounding architecture, decor and environments allowing a diverse design style from traditional through to modern minimalist concepts.

Swimming pool design is also a large part of their work sets, working with industry leaders such as Aloha Pools and Serenity Pools ensuring the pool is designed and positioned to belong in the space and become an asset all round. Steve and the team have design 2 swimming pools of the year, one for the SPASA awards, the other for the abode awards.



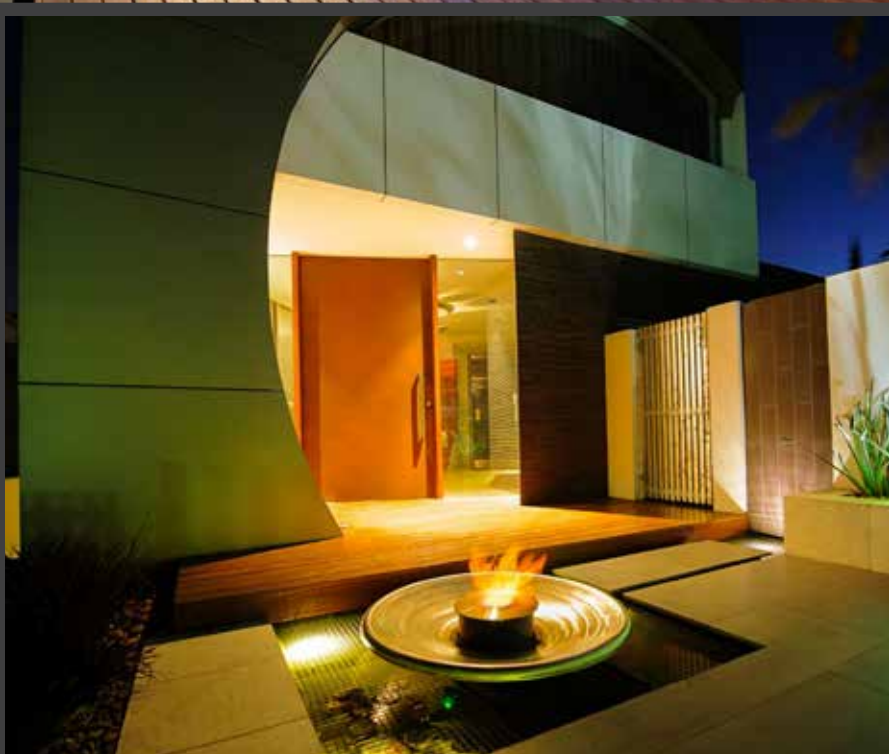
COS DESIGN™

LANDSCAPE / POOL / ALFRESCO / HOME

392 Burke Road, Camberwell VIC 3124 P 9889 3329 F 9889 3328

[www.cosdesign.com.au](http://www.cosdesign.com.au)





# Landscaping

The COS team enhance their spaces with the use of architectural foliage to suit any style garden from cycad palms, strelitzias, succulents, aloe trees, grass trees, through to layered perennial beds and more organic, eclectic style planting for more period style applications.

Screening plants and trees again make use of a diverse palette with selected bamboo species being high on the list teddy bear magnolias and Japanese maples.

Steve Taylor and the team now specialise in home design, home or façade renovations, alfresco/outdoor room design and complete home, pool and garden turn key packages.



COS DESIGN™

LANDSCAPE / POOL / ALFRESCO / HOME

392 Burke Road, Camberwell VIC 3124 P 9889 3329 F 9889 3328

[www.cosdesign.com.au](http://www.cosdesign.com.au)





# Affordable Excellence

Over the last few decades there has been an evolution in domestic and commercial outdoor design that has been nothing short of amazing.

Today the trend continues, and at the cutting edge of contemporary pool, tennis court and landscape design is Ultracourts and its swimming pool division, Exotic Pools.

Ultracourts has over 20 years, developed an enduring reputation for construction of Melbourne's finest tennis courts. Now combined with Exotic Pools, the company is able to offer a complete project package that encompasses the construction of a custom swimming pool, tennis court, and a full landscape design service.

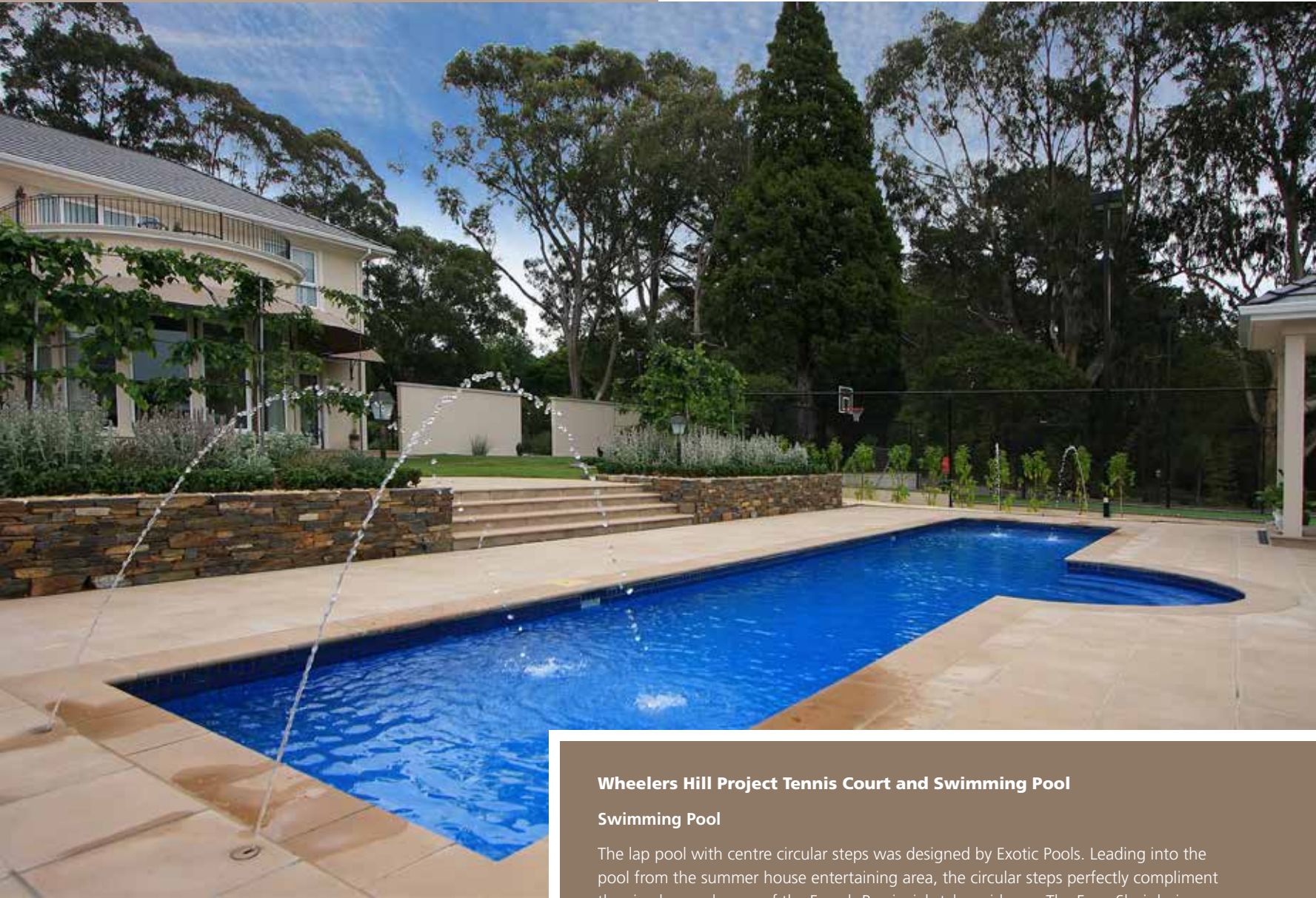
Exotic Pools and Ultracourts construct individually designed high quality indoor and outdoor in-ground concrete swimming pools, spas and tennis courts in accordance with Standards Australia. The company offers custom design of swimming pools and spas, created to the individual's specific requirements, whilst at the same time complimenting the surrounding environment.

From site inspection and surveying, design and documentation, to construction and management, the Ultracourts team are meticulous in their planning, preparation and execution of all projects undertaken.

As a registered builder commercially as well as domestically for the required categories, a member of the Master Builders of Victoria and Swimming Pool and Spa Association of Victoria, projects are performed to the required standards and regulations.

The company will also work with architects, landscape architects and designers to build pools and spas from their plans. Ultracourts and Exotic Pools will often work with landscape artists to aesthetically address the surrounds of the swimming pool leading to their outdoor entertainment area, incorporating any special features of the pool.

The companies form of contract exacts an undertaking to provide the highest standard of workmanship backed up by warranties and after sales service. The aim being to construct swimming pools and tennis courts that are consistent of quality workmanship and appearance, being the trademark of the companies ongoing success.



### Whealers Hill Project Tennis Court and Swimming Pool

#### Swimming Pool

The lap pool with centre circular steps was designed by Exotic Pools. Leading into the pool from the summer house entertaining area, the circular steps perfectly compliment the circular meals area of the French Provincial style residence. The Feng Shui design combines aesthetic appeal, with practical entertaining and family fun.

The pool incorporating the court yard and summer house provides an easy flow from the house to outdoor living. The pool and summer house form a lower terrace entertaining area. The colour scheme of the pavers around the pool, the summer house and tennis court surround are similar to reflect the tonings of the main residence.

Underground water reserve tanks were installed to provide water to fill the pool by use of an automatic water levelling device. The entire outdoor living spaces at the northern aspect of the residence were constructed by Ultracourts and Exotic Pools in conjunction with the builder to achieve an elegant style of entertaining.

#### Tennis court

This tennis court was built concurrent with the swimming pool to integrate with the residence, the pool and the summer house. A retaining wall was constructed around the tennis court with the surface finished to match the residence. The tennis court also incorporates two soccer goals and two basketball units within the fence line. Lighting of the tennis court is by use of high quality 1000 watt tennis court fittings exclusive to Ultracourts providing an environmentally friendly lighting system.

The tennis court surface is of a high quality low pile 16mm synthetic grass "Procourt" exclusive to Ultracourts, and infilled with 100% cover of green sand.







### Lysterfield - Pool with Sunken Bar

The design brief for this pool was that it had to be similar in style and features to a holiday resort swimming pool in Bali, where the owner's had an unforgettable holiday experience. They wanted to achieve the resort style home entertaining area, as good as a 5 star holiday away.

The pool was planned with a sunken bar and formed concrete submerged seats. To the rear side of the pool area a feature wall with a Silk Flow water feature and mood lighting is accompanied by two large planter boxes to enhance the aesthetics of the pool. A seating area with airgrid and blower was also included.

The design of the pool was cleverly executed to give the ultimate in entertaining, allowing a place for refreshment without having to get out of the pool. The sunken bar is the highlight of the pool, together with the underwater seating area, which combines with a built in airgrid to assimilate a spa for extra feature and entertainment.







### **Lysterfield - Pool with Sunken Bar**

The workmanship in the construction of the pool and all its features had to achieve the highest quality expected from the owners. The interior of the pool was Quartzon render with water line tiles. Other features of the pool include an in-floor cleaning system and an automatic chemical dosing system to keep the water balanced and the maintenance to a minimum.



*Ultracourts  
Exotic Pools*

Ultracourts Pty Ltd & Exotic Pools  
Unit 33, 513 – 515 Maroondah Hwy  
Ringwood, Vic 3134

Tel: 03 8870 5988 Ultracourts

Tel: 03 8870 5999 Exotic Pools

Fax: 03 8870 5900

[sales@ultracourts.com.au](mailto:sales@ultracourts.com.au) & [sales@exoticpools.com.au](mailto:sales@exoticpools.com.au)

[www.ultracourts.com.au](http://www.ultracourts.com.au) & [www.exoticpools.com.au](http://www.exoticpools.com.au)

Contact: Rob Johnson





## Regional Building Excellence



**need a country builder?**

[countrybuildersvic.com.au](http://countrybuildersvic.com.au)



# Country proud

Over the past 23 years, Hedger Constructions has grown to become the leading building company in Alexandra and surrounding districts. The reason is simple: friendly professional staff, quality materials and pride in workmanship.





Hedger Constructions is a local, family-based company with strong links to the community. Directors Steven and his wife Sharon are very much aware of what people look for in home building and renovations and take a hands-on approach.

The cornerstone of the company's success is pride in craftsmanship and use of top-quality materials and outstanding tradesmen. With client satisfaction paramount, Hedger's staff works hard to ensure customers are involved fully in every step. Open and ongoing communication is regarded as vital.

Hedger Constructions has won 21 Master Builders Association of Victoria Awards in seven categories, underpinning its reputation as an innovator in design and construction.

These awards include 2008 and 2011 Victorian Regional Builder of the Year. Hedger Constructions also won the HIA 2006 Best Energy Efficient Home in Victoria Award, emphasising the company's Green Living environmental approach to building.



Substantial excavation and an outstanding design were called for to meet the site challenges of building a three-bedroom retirement home on a one-in-two slope in mountainous Eildon. The owners wanted a low-maintenance residence that could comfortably accommodate guests and grandchildren.

Huge steel columns were built to an exact millimeter to support the suspended slab at the front. They stand as a work of art. Timber and aluminium extruded panels make a unique framing system for the double-glazed windows and doors. The excavated embankments are safely stabilised with shotcrete.

Each bedroom has a spacious en suite bathroom and walk-in wardrobes. All rooms offer scenic views from this rectangular house, which has a large terrace ideal for outdoor dining and children's play.

The home is air-conditioned, with an in-slab gas boiler-fired coil hot-water system meeting the owners' need for unobtrusive heating. For the owner chef, a state-of-the-art, Gaggenau-equipped kitchen and pantry area almost the size of a small apartment is a delight.

With water purity and conservation a priority, the property has a specially designed collection, storage and filtration system.



This Buxton residence won the 2011 Master Builders Regional Award for the Best Custom Home Between \$200,000 and \$300,000.

The owners lost their original home in the 2009 bushfires, and their new residence reflects their values of sustainability and recycling. A soaring 4.7-metre skillion roof, plus an extensive mix of recycled ship-lapped ironbark Shadowclad and corrugated iron, makes an eye-catching visual impact. Earthy tones connect with the natural landscape to create a sense of warmth and welcome. Two rammed earth walls frame the living, bedroom and study areas, further enhancing this relationship with the environment.

Inside, richly coloured polished concrete floors and natural timber fixtures and cabinetry complete the owners' desire for simplicity, as does an all-timber kitchen with solid red gum tops, glass splashbacks and hoop pine ply doors and shelving. Bathrooms are made of Zinalume mini orb panelling framed in ironbark picture palings. Double-glazed timber windows to the lower areas allow in plenty of natural light.

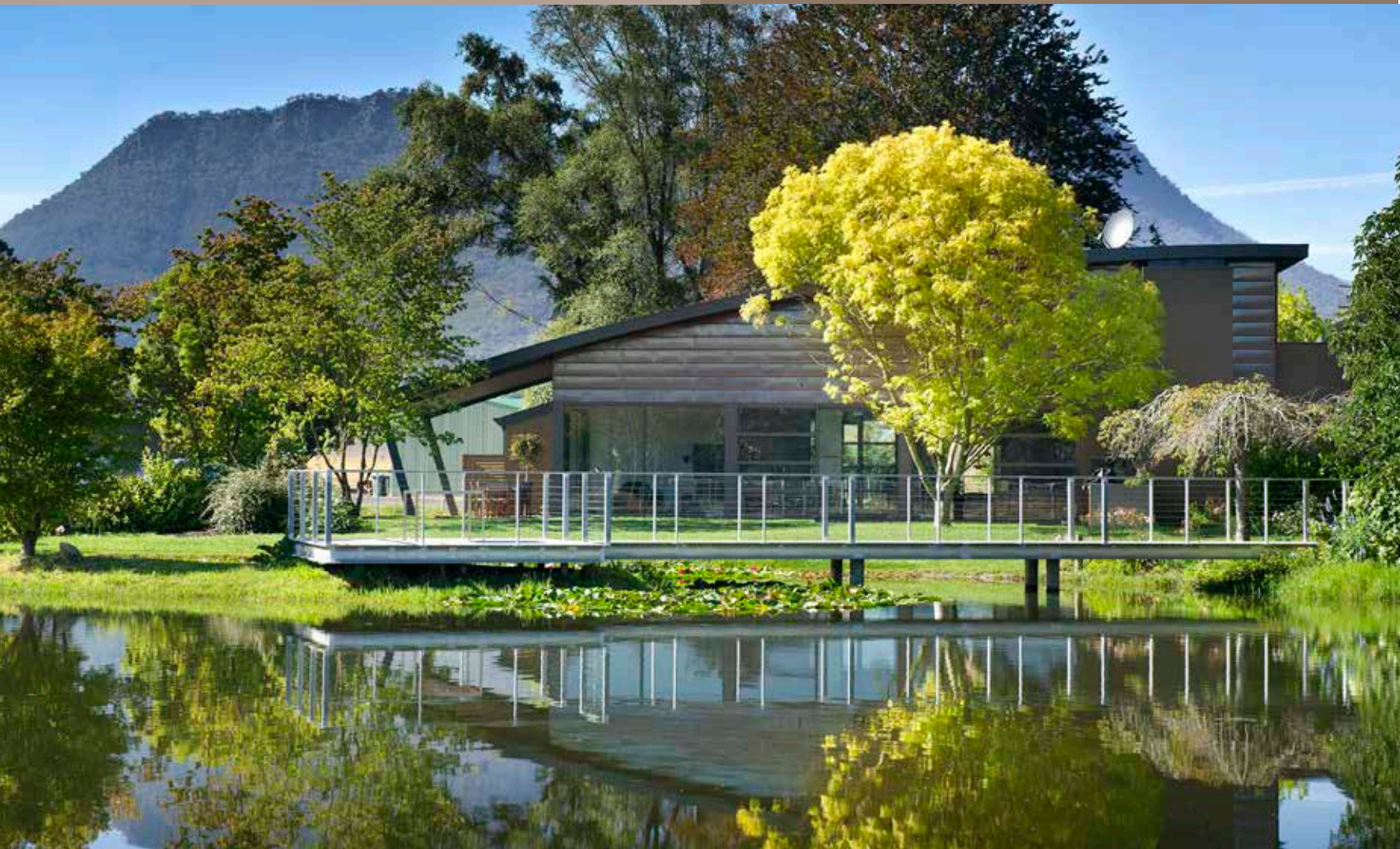
A 45,000-litre tank stores water collected from the roof, and a solar hot water system completes this durable and liveable home.



Using a simple rectangular homestead design, this home at Thornton – built to replace an original farmhouse – has a 30-degree pitched roof with wide verandahs and a textured rendered finish. The colours blend with the surrounding hills, with double hung windows and slightly raised landscape gardens giving the house a “nestling” appearance while still offering magnificent views.

Three-metre ceilings enhance the open feeling, while staying true to the spirit of traditional Australian homestead design. The front entry is into spacious lounge that features an inset fireplace on a raised hearth. In the kitchen, which has a wood-fired AGA oven, 900mm-high overheads add to a feeling of boldness, height and depth. A large meals area provides a sense of formality.

The bedrooms offer privacy using the traditional hallway concept. The sizeable main bedroom with its en suite can function as a parent retreat. Bedrooms two and three have floor-to-ceiling windows that open on to a picturesque backyard. The home was won the 2004 MBAV Regional Award for Best Custom Home \$175,000 - \$275,000.

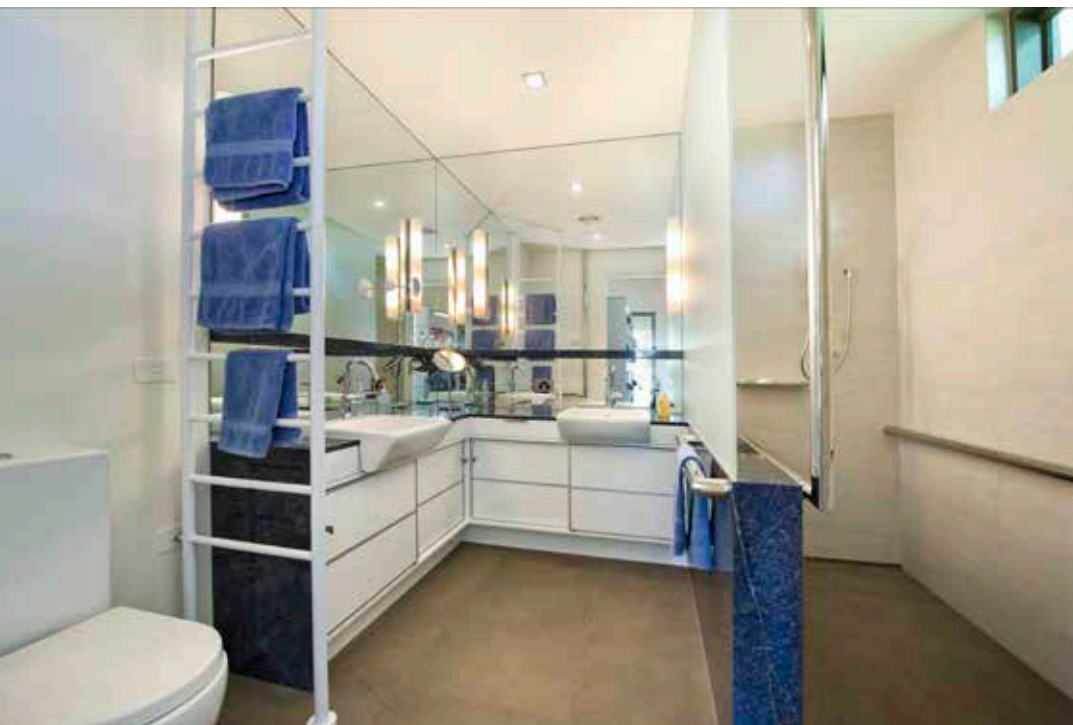


This large-scale open-plan home is built on 320 hectares on the outskirts of Taggerty. The design was for a recently retired couple.

They wanted an interesting and liveable environment that allowed for disability movement, and also took advantage of the beautiful location. The house sits within a heritage garden overlooking a large pond and has river and mountain views.

The result is a spacious interior that minimises the use of doors, every floor surface is non-slip and all grading is practical for a disabled user with or without a wheelchair. A lift provides access to the mezzanine study and a view of Cathedral Mountain. The bathroom looks out to the rose garden. A lift mechanism for the bath is flush-mounted in the ceiling. Grab bars are usefully and subtly placed in every service area.





Double-glazed sliding doors in the living and dining open out to the barbecue terrace and verandahs. Bedrooms have white Japanese-influenced sliding doors. Alpaca carpets in the three bedrooms and library were woven from the same dye lot.

Structurally, the building is 'T' shaped to accommodate the 100-year-old trees within the garden. Both wings have verandahs facing the large pond. A bridge leads to an entertainment and relaxation area on a small island. The shape of the roofing echoes the surrounding rolling countryside.



Bushfire protection was the major challenge in constructing the Narbethong Community Hall. The hall also needed to reflect the history and heritage of the community, a long association with the timber industry, plus provide a dynamic and inspirational multi-use venue.

To meet the high safety requirements, the innovative, protective exterior is made of floor-to-ceiling double-glazed windows wrapped in bronze, fire-resistant screens. Two sections of the building walls open on an automated system. This has created a welcoming building nestled into the surrounding countryside.

Inside, the main material is timber with recycled messmate to the ceiling complementing the messmate flooring. The 3.8-metre vertical timber fins that curve throughout the building are of laminated blackbutt and reflect the hall's association with the local Black Spur forest. The fins are also designed to create a series of smaller spaces within the main area.

A high-quality commercial kitchen with marble bench tops and full multi-access bathroom facilities completes a contemporary and functional building that will be well used and enjoyed for many years.

The hall received a special commendation in the 2012 MBAV North East Excellence in Construction of Commercial Buildings \$1m-\$3m category.



PO Box 343, Alexandra, VIC 3714

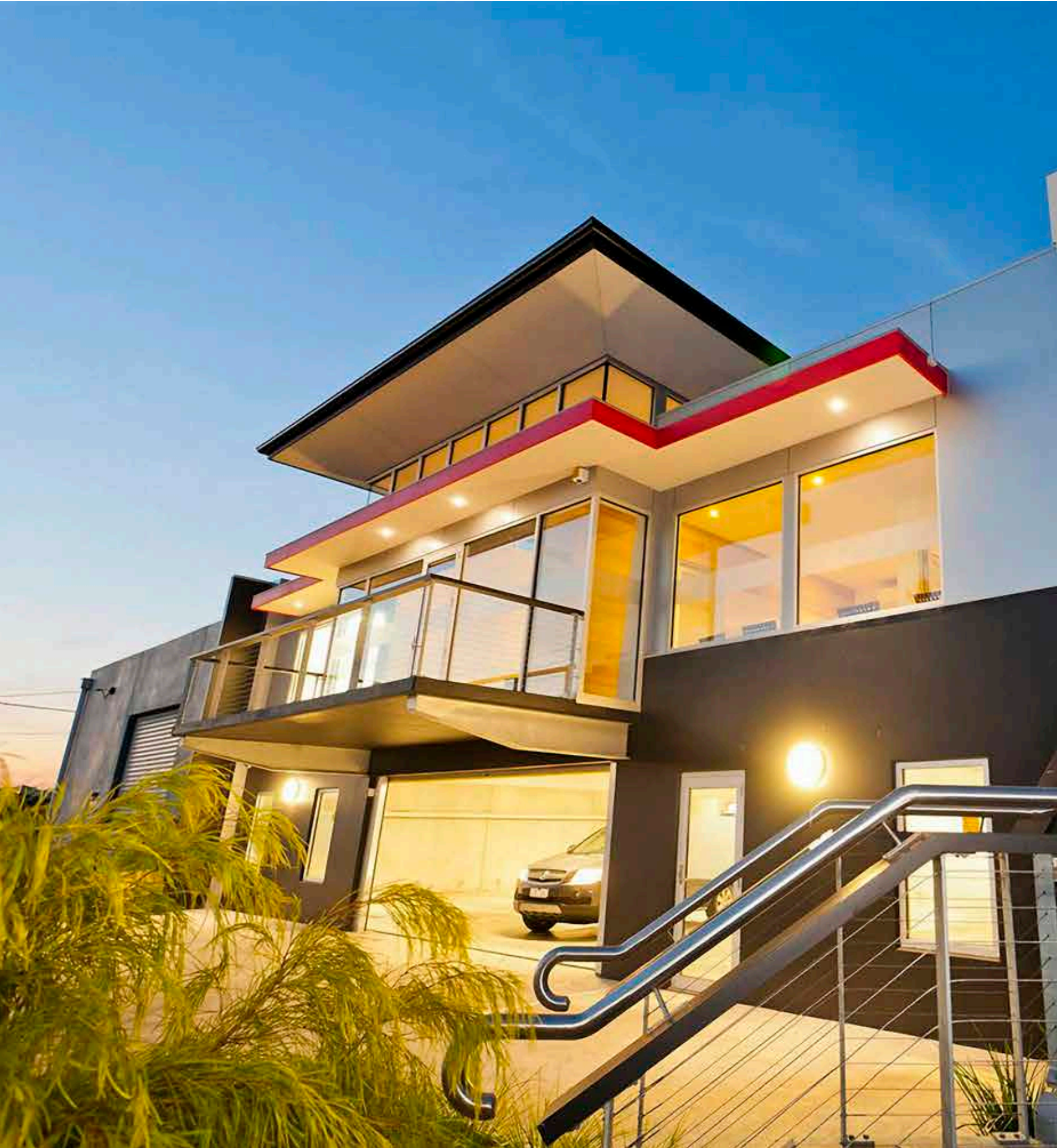
T 5772 2750

F 5772 1778

[www.hedgerconstructions.com.au](http://www.hedgerconstructions.com.au)

[info@hedgerconstructions.com.au](mailto:info@hedgerconstructions.com.au)







# Designed to last

Michael Higgins Building Design is a small-scale “boutique” firm in Ocean Grove, Victoria.

The multi-disciplinary practice has traditionally focused on the residential sector, but over the years has diversified into the commercial sector, with several medium-scale commercial projects to complement its substantial folio of completed works.

MHBD – principal Michael Higgins has 25 years’ industry experience – prides itself on providing practical, economic yet stimulating designs that collectively satisfy a client’s requirements and also the required town planning and review panel processes.

With an established and accountable consultant team, MHBD makes the most of their professional capabilities to give a well-rounded and realistic package that satisfies all criteria specific to each project.

Diversity has been one of MHBD’s strength. These images provide a snapshot of its range of projects and their broad aesthetic appeal. Different locations, site limitations, client perceptions, planning requirements and taste are all considered as part of the briefing evolution to create a valued and enduring product.

This project was for a Geelong surveying and planning practice that needed a dedicated, purpose-built facility for its expanding business.

The lower level has a forecourt where clients can park their vehicles. Staff vehicles are parked in an underground garage, which also has storage space. Central stairs lead to the office area above.

This area houses the main offices, reception area, boardroom, meeting rooms and staff facilities. Central clerestory windows allow in plenty of natural light for workstations and the general office.

An upper office area to the rear allows for expansion or could be sublet.

Designed and documented in a relatively short time, these premises have set the pace in a new commercial growth area of Geelong.





These two homes are designed to make the most of southern views across Bass Strait, Barwon Heads Bluff and Port Phillip Heads. At the same time, the layouts provide sheltered external northern living areas while allowing in plenty of light.

In each home, an excavated garage leaves room for two levels of living, with associated bedrooms and amenities. Neutral exterior tones make the most of the coastal environment.



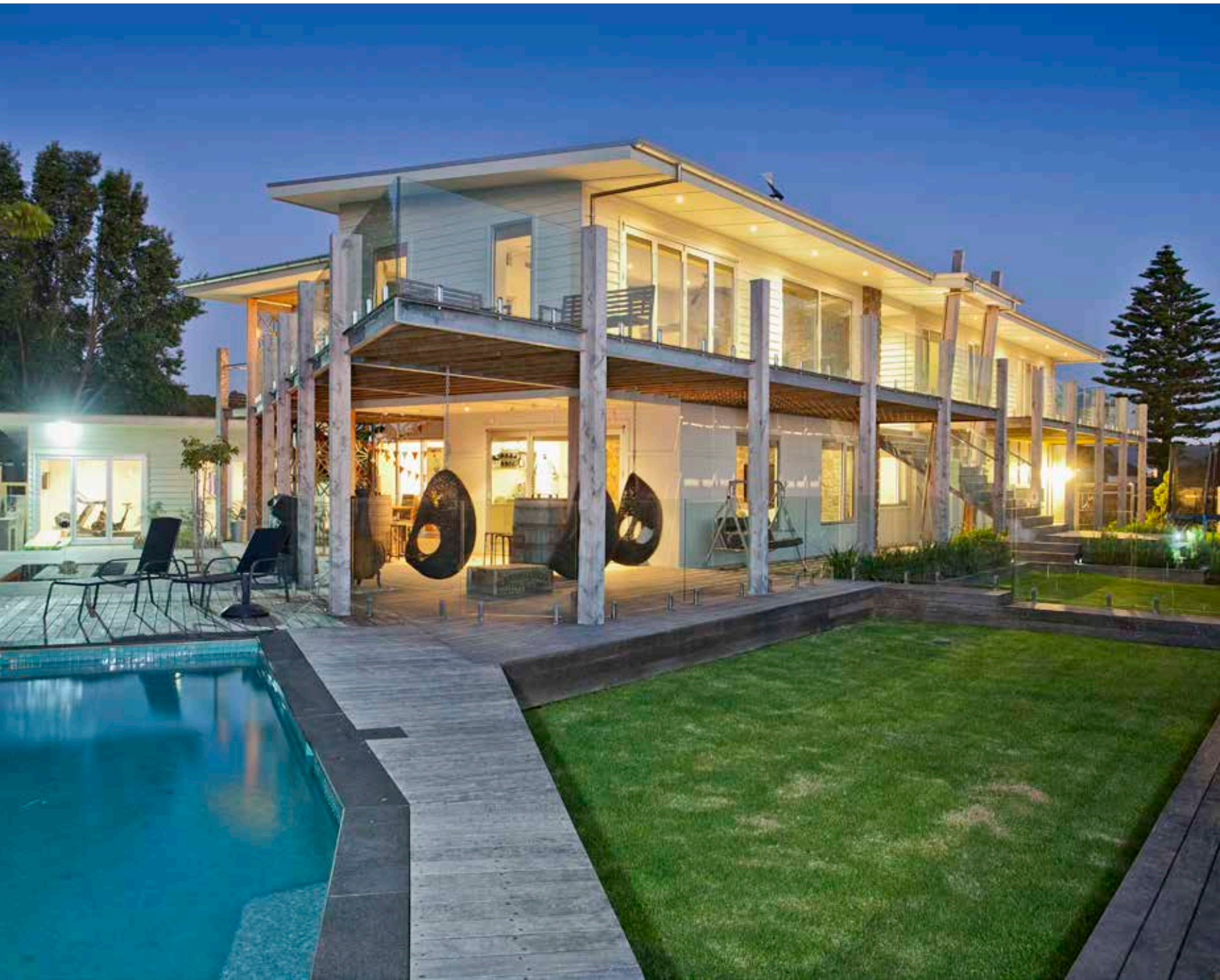
Two homes at 13th Beach Golf Links, Barwon Heads, offer strong cubic forms with natural timbers, metallic cladding and rendered masonry. The designs capture plenty of northern light to the sundeck and courtyard areas while capturing the views facing south.

The houses can be enjoyed from the street or the golf course – so essentially these properties have no front or rear space.

A vigorous design review panel process sets a high standard and level of desirability.

MHBD has completed 12 projects in this area and has been a major contributor in this precinct.





These homes feature contemporary versions of the traditional, modest skillion-roofed beach house. One home is in Lorne, the other is on the Barwon River in Ocean Grove. Both homes feature extensive double-glazed windows to make the most of ocean and river views.

Vaulted ceilings and textured interior linings add to a contemporary but timeless ambience. Outside, natural timbers and stone provide comfortable contrasts against painted weatherboard and sheet claddings.



Set in historical Queenscliff, with its stringent heritage controls, this home is an MHBD interpretation of the coastal/historical hybrid, paying respect to homes of previous years while avoiding the shortcomings of a bygone era.

This home is focused around a central northern courtyard, with views over Swan Bay and the Bellarine Peninsula hills beyond. The residence will stand the test of time.



This two-level commercial development has retail businesses on the lower level and offices above. Tilt panel walls contrasting with natural timber accents, polished concrete floor finishes, extensive halide lighting and exposed cable trays give a contemporary and industrial appearance in this growing commercial area.



87 The Parade  
Ocean Grove, Victoria 3226

P 5255 3355  
F 5255 3366

[mhbd.com.au](http://mhbd.com.au)  
[info@mhbd.com.au](mailto:info@mhbd.com.au)



**Graeme  
Alexander  
Homes**



## Turning yesterday into tomorrow

When you return to Australia after living overseas for a long time, you want to choose the right site and home environment for yourselves and your young children.







For one such family, an established 3573-square-metre battle-axe block with sea views, and with well-landscaped neighbourhood properties in bayside Mt Eliza, was perfect.

The main concern was that an existing house – a substantial five-year-old project home with a Georgian influence – was poorly positioned.

Because of its size and a wish to keep a lid on expensive ideas, we advised the owners to renovate, extend and upgrade. Renovating would also minimise damage to the established garden.

The first step in the design process was to reposition the existing south-east facing pool to the sunny, north-west view side. This then allowed the design to turn and face this new outdoor area.

A new kitchen was installed within existing and new living areas, the master bedroom was redesigned with en suite and walk-in robes, an upper rumpus room was added plus an additional bedroom and bathroom. A viewing deck was built off the upper rumpus room.

A new lower living room opened up the outdoor pool area, while the garden was redesigned to make the most of the mature trees already there.

New heating, cooling, curtains, blinds and floor coverings were installed, and a fresh colour scheme completed the picture.

When renovating, it is practical and worthwhile to incorporate as much of the existing building as possible otherwise you might as well start again.





## Bay Views and Easy Living

When you leave something special, returning can be just the thing you need. The owners of this home had enjoyed Mt Martha in their early years, but left to work and live elsewhere. A love of the town fuelled a desire to return, but their old home needed considerable work to make it comfortable.

Fortunately, a beautiful 1099-square-metre front-row block at the end of a neighbouring court was available. The block had been vacant for years, just waiting for a deserving home.

Graeme Alexander Homes was engaged to design a home that would do justice to the exceptional site and surrounding views. The owners wanted a light, airy home for easy living, with interesting lines to enhance the aesthetic appeal.

They also wanted room to accommodate extended family and guests comfortably during overnight visits. Graeme Alexander Homes fulfilled this requirement by incorporating a guest wing with spacious living areas and bedrooms.

Other key considerations were easy access and capturing the stunning views. To achieve these features, a slight elevation was needed to maximise bay views from the northwest and beach vistas from the north-east. This has also ensured the upper-level can be easily accessed via a ramp, without the need for stairs.

The upper level consists of an expansive deck, perfect for relaxing and taking in the views, a lounge, dining area, kitchen, pantry, study, powder room and main bedroom, with a private deck.

The lower level comprises an extended family area – including guest accommodation with a bathroom and en suite – which opens to a living area that boasts tree-lined views to the bay. A hidden cinema/entertaining area sits under the entry – perfect for effortless entertaining.

The lower part of the home houses an excavated three-car garage.

With its light, understated colours complemented by hardwearing and beautiful natural timber and stone, the home nestles gracefully into the wonderful block.

With almost 30 years' building and designing experience, Graeme Alexander Homes is the conduit from ideas to finished project and beyond, bringing together all the professionals to complete your project – from design lines, through the permit maze, and co-ordinating the finishing trades, including landscape and pool designers.

Being builders helps greatly when considering construction methodology, materials, and design details to fit the all-important budget.





## Worth the wait

They say the best things in life are worth waiting for.

So it was a dream come true when the opportunity arose to purchase a block and build a home in a natural setting with direct access to the beach.

The owners were so passionate about the Design Process that would maximise the use of this precious location that they put the project on hold for seven years, so their home could be built to its full potential. Happily, after such a long waiting time, the original concept still met most requirements, so only a few modifications were required.

The 907-square-metre block has a shared right of way on the northern side, which makes this unique dwelling more like a stand-alone townhouse. The views are to the south-east, so an elevated major living area was chosen to maximise this and accommodate the floor plan of an oddly shaped block.

The top floor consists a kitchen and meals area, living area, master bedroom with en suite and powder room. A mix of upper decks is designed to give protected outdoor living. There is a front-view deck, and a rear sundeck overlooking the northern-aspect swimming pool.

The lower level has a transparent feel, with views throughout across the pool area to the ocean. This level has an entry, living area, bar, a kitchenette that opens up to the pool and barbecue. There is also a guest bedroom with an en suite, spare family bedrooms, a study, and a garage that doubles as a rumpus room.

With its beautiful natural timber, simple classic roofline, WRC windows, Shadowclad facing and rendered brickwork, this home blends serenely into its natural setting.









## Now for the good views

A high-end exterior, an exquisite layout and . . . oh, a great view of the neighbours?

Achieving an enviable residence is about turning negatives into positives, in this case making the wrong views go away and opening up the design to get the right views.

This refined, contemporary residence sits on an 1100-square-metre axe-shaped block, but with neighbours on all corners, privacy was a primary objective for Graeme Alexander Homes.

"This was achieved by blocking affected areas with roof shapes and room placements," says principal Graeme Alexander. "Careful planting and landscaping channelled the views towards the east, over the infinity-edge pool to the Dandenong Ranges.

"The residence was planned for two parents and three children, with plenty of room for the family to expand into in the future."

The house boasts two generous living zones, an entertainer's kitchen that flows to an alfresco room, and a study. The four bedrooms include an east-facing master bedroom upstairs, an area that has the spacious, slightly removed feel of a parental retreat.

"A top-hat roof and highlight windows over the family and kitchen area mean the home is light and warm all year round," Graeme says. "The high standard of design is typical of our projects."



1 Albany Way, Mornington 3931  
(Corner of Watt Road and Woodbyne Crescent)  
Victoria, Australia

P 5975 4561  
F 5976 2380

[gahomes.com.au](http://gahomes.com.au)

# Being Green

As energy prices are set to soar and more extreme weather patterns become the norm, homeowners, builders and architects will need to shift their focus to more environmentally sustainable home design strategies.

The online Climate Design Wizard ([www.designingforclimate.com.au](http://www.designingforclimate.com.au)) is an initiative from Think Brick Australia and provides information about local climates and offers simple design strategies and advice to adopt a more environmentally sustainable outcome. The site is a valuable resource in the quest for energy efficiency in the domestic arena and can provide potential homebuilders with valuable information before they speak with their architect or building designer.

Even a basic understanding of the design options available to new homebuilders will help decide the long-term sustainability and energy efficiency of a home. When an architect or building designer suggests the inclusion of 'passive design principles' they refer to a multitude of elements including the appropriate placement of fixed, or adjustable, eaves and shade structures. The type of insulation and glazing used has a significant impact on the energy efficiency of a home and, when specified correctly, can help maintain year round comfort levels.

Passive heating and cooling initially involves the planning of living and sleeping zones according to the orientation of the home. For instance, the alignment of living areas on the north facade and bedrooms and bathrooms to the south or east ensures as much natural warmth as possible is absorbed in the most used areas of the home. The positioning of windows to deflect or encourage air movement and cross breezes assists in passively controlling thermal comfort.

Water efficiency is a sensitive topic around Australia. "Reduce, reuse and recycle" - it's the mantra of the environmentally aware and, while reducing overall water use is the obvious short-term solution, the installation of water saving devices at the construction stage of the home is not only responsible, but costs saving as well. Rainwater harvesting and recycling of domestic greywater will become higher priorities in the future. Investing in these technologies now will assist in 'future-proofing' the home.





# LED Lighting



LED (Light Emitting Diode) lighting is the obvious choice if your building a new home in today's energy conscious market. There are some new lighting products recently released, to help meet the 6 star energy efficiency requirements of the Building Code of Australia for all new homes.

You can achieve increased energy efficiency by considering recessed downlights, modern dimmable oysters, pendants, and replacement lamps to retrofit existing downlights, even candle globes for Chandeliers.

LED lights are a new generation of lighting technology. The application of LED into everyday residential or commercial lighting provides many benefits over traditional lighting. Other than the obvious, that of saving money by reducing energy consumption, LED lights also radiate very little heat, have a much longer life-span of up to 30,000 hours compared to 15,000 hours for fluorescent tubes and 2,000 hours for traditional bulbs. Using a light for 4 hours a day, will give a life-span of 20 years.

Manufactured free of Mercury, Lead, Cadmium and Chromium, LED lights use less power, emitting less greenhouse gasses, and reduce a household's carbon footprint by up to 68%, simply by exchanging all incandescent bulbs for new LED lights.

## Some common questions about LED lights include:

Can I use my existing halogen transformer?

*Yes, although it is not recommended. The use of purpose built LED transformers, or drivers will offer a regulated output and will ensure the maximum life span for your LED light.*

Will an LED replacement light be as bright as my 50W halogen light?

*Current generation LED replacement lights do not provide the same output as a 50W halogen light. A 6 watt LED replacement light offers up to around 35W of comparison light output. Only full retrofit down lights offer equal and superior performance to halogen lamps .*

Can I place insulation over my LED downlight?

*Insulation should be no closer than 30mm surrounding the heat sink of the downlight, as the heatsink requires air circulation to work effectively. Rolled insulation should not be pressed down over the heat sink.*

Does frequent switching of LED lights reduce their life span?

*No*

Are LED products going to get cheaper?

*As with any new technology, mass production and increasingly refined lighting designs will result in price reductions over time. In the short term it is unlikely that LED lighting will be as cheap as the incandescent lights they are replacing. However, the benefits of LED lights far outweigh the initial higher cost of ownership.*

Can I compare different LED lights by their wattage alone?

*No. A 3 watt LED light can be brighter than a 5 watt LED light. What matters is the efficiency, or how each watt of power is converted into light. When shopping for LED lights, focus on how bright the lamp is compared, not the watts being used.*

Can LED lights be used outdoors?

*LED lights are perfect for the garden. Being a low voltage light source LED is also perfect around pools and in the open weather. Wiring is done with 12 or 24 volt and connections are manufactured to an IP rating of IP67. Outdoor LED lighting is available in flood lighting, spot lighting, in-ground lighting and underwater lighting, with a choice of beam angles, brightness and colour.*





THE ORIGINAL AND THE BEST



perfect for multi-storey homes



curved walls are possible



pouring concrete into blocks



completed structure before render



overlayed with natural rock

## Thermacell is the smartest, safest, easiest and most cost-effective way to build a home.

Brought to Australia in 1980, and used in Europe since 1932, the Thermacell system is so easy to assemble that any handy person can build with it. So impressed was Geoff Bennett, he not only built his own home with Thermacell blocks, but also bought the company. Geoff's home in Sommersville houses the head office and storage facility for the company.

"We are happy to show customers our home and introduce them to all facets of our system. We can refer them to contractors if they wish to have their buildings built for them, or we can oversee owner builders at their sites."

This level of personal service from Geoff and son David Bennett, combined with the reduced costs, ease of construction, environmental and costs saving factors, means you cant go past Thermacell when building. Thermacell is also virtually maintenance free, with an end cost comparable to brick veneer, but that's where the comparison ends. Thermacell is stronger, and has superior acoustic and insulation qualities. The walls don't expand or contract, meaning no expansion joints are necessary, and no cracks ever appear on the interior walls.

Thermacell by definition is a smart insulated concrete form, or ICF technology, engineered using polystyrene to form a strong fire-retardant formwork, used to cast concrete wall and floor structures. The blocks are dry-stacked without mortar, and have keyways top and bottom which push together like Lego blocks. The hollow blocks are then filled with concrete.

Customers choose Thermacell for the quality of our product and our personal service. We believe that we make the finest ICF systems in Australia, and our system stands alone for speed of build, accuracy and quality.

The simplicity of our system also makes it attractive to owner-builders who have little building experience, as well as professional builders who choose our system because it is so quick and easy to use. Our company website at [www.thermacell.com.au](http://www.thermacell.com.au) for more information about Thermacell.





"We have a house that is structurally very sound and will save us even more money by not requiring much heating or cooling. It also means we are doing our bit for the environment. Building with Thermacell has been a very positive experience and we are more than happy to endorse the product."

**Steve Ryan - owner builder**

"A lot of people don't like to think outside the square, they're a little bit scared I think, set in their building practices, whereas, especially with the utility costs in this day and age, they keep rising, and you've got to look at avenues to save on power usage, heating and cooling - and you can't go wrong using this product".

**Michael Pratt - Pratt Builders**



PO Box 447, Somerville VIC 3912

Geoff Bennett: 0414 664 500

David Bennett: 0412 577 431

p. 03 5977 7996

info@thermacell.com.au | [thermacell.com.au](http://thermacell.com.au)



## EKODECK - THE TIMBER OF THE FUTURE.

When you hear the words 'bamboo' and 'recycled material', decking rarely comes to mind. However, one Australian company has combined these two elements to create a truly sustainable decking product.

Ekodeck is the new bamboo composite decking from the Australian owned company, Ekologix. Although it has the look and feel of traditional timber, Ekodeck is made almost entirely of plantation bamboo and recycled bottles, making it a sustainable alternative to timber decking.

As one of the fastest growing plants in the world, bamboo is an attractive alternative for customers concerned with the harvesting of tropical forests. The other ingredient in Ekodeck, recycled bottles destined for landfill, not only earns the product another green tick, but also gives the product some impressive durability features.

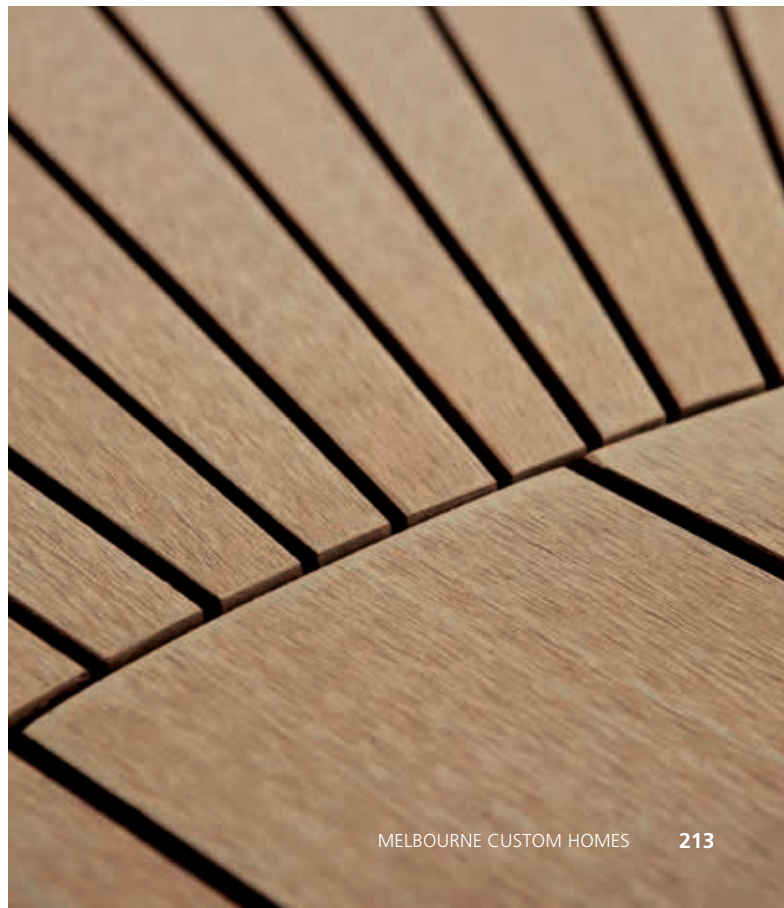
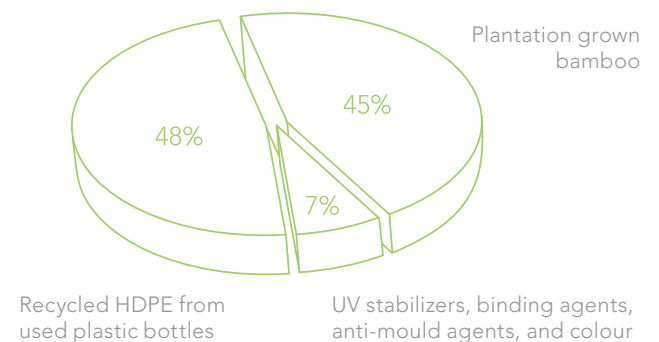
"Painting, oiling, staining and sealing become chores of the past, saving you both time and money."

The 'wonder' decking's unique construction means it's also incredibly low maintenance - never requiring painting, oiling or sealing. It's also tailor made for the unforgiving Australian environment, meaning it resists rot, decay and termites, all naturally.

With this impressive list of benefits, and obvious commitment to the environment, it was only a matter of time before people took notice. At this year's Melbourne International Flower and Garden Show, Ekodeck was a key feature in a Gold Medal winning garden. And at the time of printing, Ekodeck has been nominated for the WWF Switzerland's Tropical Forest Challenge.

Boasting all the benefits of traditional timber, but with superior green credentials and durability, Ekodeck is an attractive choice for homeowners, renovators and builders alike.

For more information on Ekodeck, visit [www.ekologix.com.au](http://www.ekologix.com.au)



# MELBOURNE CUSTOM HOMES

## Advertisers index

| ADVERTISER                      | Phone        | Web  | Page         |
|---------------------------------|--------------|--|--------------|
| ABEY                            | 1800 809 143 | <a href="http://www.abey.com.au">www.abey.com.au</a>                                       | 145          |
| AKL DESIGNER KITCHENS           | 03 9587 3413 | <a href="http://www.akldesignerkitchens.com.au">www.akldesignerkitchens.com.au</a>         | 141          |
| ARCH:10                         | 03 9530 4910 | <a href="http://www.arch10.com.au">www.arch10.com.au</a>                                   | 67           |
| ATKINSON PONTIFEX               | 03 9585 1165 | <a href="http://www.atkinsonpontifex.com.au">www.atkinsonpontifex.com.au</a>               | 59           |
| AUSTRAL BRICKS                  | 13 2742      | <a href="http://www.australbricks.com.au">www.australbricks.com.au</a>                     | 215          |
| AUSTRAL PIANO WORLD             | 03 9497 2616 | <a href="http://www.pianoworld.com.au">www.pianoworld.com.au</a>                           | 127          |
| BACK TO SLEEP                   | 1300 854 557 | <a href="http://www.backtosleep.com.au">www.backtosleep.com.au</a>                         | 119          |
| BELLEMORE HOMES                 | 03 9887 8984 | <a href="http://www.bellemorehomes.com.au">www.bellemorehomes.com.au</a>                   | 43           |
| BRIGHTON POOLS AND SPAS         | 03 9553 2011 | <a href="http://www.brightonpools.com.au">www.brightonpools.com.au</a>                     | 158          |
| BORAL                           | 13 15 40     | <a href="http://www.boral.com.au">www.boral.com.au</a>                                     | 165          |
| BUSBY HOMES                     | 03 9761 5444 | <a href="http://www.busbyhomes.com.au">www.busbyhomes.com.au</a>                           | 116          |
| COS DESIGN                      | 03 9889 3329 | <a href="http://www.cosdesign.com.au">www.cosdesign.com.au</a>                             | 166          |
| DANIEL ROBERTSON                | 03 9303 4750 | <a href="http://www.danielrobertson.com.au">www.danielrobertson.com.au</a>                 | 12           |
| DAVID REID HOMES                | 03 9558 9909 | <a href="http://www.drhme.com.au">www.drhme.com.au</a>                                     | 13           |
| DOMAYNE                         | 1800 366 296 | <a href="http://www.domayne.com.au">www.domayne.com.au</a>                                 | 2            |
| EKOLOGIX                        | 03 9639 7774 | <a href="http://www.ekologix.com.au">www.ekologix.com.au</a>                               | 26           |
| ENGLEHART HOMES                 | 03 9810 2800 | <a href="http://www.engleharthomes.com.au">www.engleharthomes.com.au</a>                   | 75           |
| ENGLISH TAPWARE COMPANY         | 03 9818 1403 | <a href="http://www.englishtapware.com.au">www.englishtapware.com.au</a>                   | 148          |
| ENTERPRISE CONSTRUCTIONS        | 03 9329 9611 | <a href="http://www.enterpriseconstructions.com.au">www.enterpriseconstructions.com.au</a> | 35           |
| GRAEME ALEXANDER HOMES          | 03 5975 4561 | <a href="http://www.gahomes.com.au">www.gahomes.com.au</a>                                 | 197          |
| HEDGER CONSTRUCTIONS            | 03 5772 2750 | <a href="http://www.hedgerconstructions.com.au">www.hedgerconstructions.com.au</a>         | 181          |
| HERMITAGE BESPOKE               | 03 9535 0513 | <a href="http://www.hermitagebespoke.com.au">www.hermitagebespoke.com.au</a>               | Inside cover |
| HOUSE OF CHANDELIERS            | 03 9809 4411 | -  | 126          |
| LAPEGE TILES                    | 03 9419 8777 | <a href="http://www.lapege.com.au">www.lapege.com.au</a>                                   | 136          |
| LIMESTONE AUSTRALIA             | 03 9773 5540 | <a href="http://www.limestoneaustralia.com.au">www.limestoneaustralia.com.au</a>           | 14           |
| LOOK ART                        | 0419 309 321 | <a href="http://www.lookart.net">www.lookart.net</a>                                       | 110          |
| LUCAS MORRIS HOMES              | 03 9810 2888 | <a href="http://www.lucasmorris.com.au">www.lucasmorris.com.au</a>                         | 20           |
| MICHAEL HIGGINS BUILDING DESIGN | 03 5255 3355 | <a href="http://www.mhbd.com.au">www.mhbd.com.au</a>                                       | 189          |
| MULTITEX CORPORATION            | 1300 333 331 | <a href="http://www.multitex.com.au">www.multitex.com.au</a>                               | 7            |
| NORTON BUILDERS                 | 03 9598 8464 | <a href="http://www.nortonbuilders.com.au">www.nortonbuilders.com.au</a>                   | 83           |
| PAR TAPS                        | 03 9484 0960 | <a href="http://www.partaps.com.au">www.partaps.com.au</a>                                 | 150          |
| POLYCLAD                        | 1300 333 334 | <a href="http://www.polyclad.com.au">www.polyclad.com.au</a>                               | 6            |
| REAL FLAME                      | 03 9428 4443 | <a href="http://www.realflame.com.au">www.realflame.com.au</a>                             | 1            |
| RYCON BUILDING GROUP            | 03 9894 1500 | <a href="http://www.ryconbg.com.au">www.ryconbg.com.au</a>                                 | 91           |
| SOVEREIGN INTERIORS             | 07 5592 0161 | <a href="http://www.overeigninteriors.com.au">www.overeigninteriors.com.au</a>             | 10, 108      |
| STEVEN HANSON ARCHITECT         | 03 5964 9211 | <a href="http://www.stevhansondesign.com.au">www.stevhansondesign.com.au</a>               | 98           |
| STONEHENGE                      | 03 9696 2522 | <a href="http://www.stonehenge.com.au">www.stonehenge.com.au</a>                           | 51           |
| SCULPTURA                       | 03 9824 5555 | <a href="http://www.sculptura.com">www.sculptura.com</a>                                   | 128          |
| THE POOL ENCLOSURE COMPANY      | 1300 658 285 | <a href="http://www.thepoolenclosurecompany.com.au">www.thepoolenclosurecompany.com.au</a> | 164          |
| THERMACELL                      | 03 5977 7996 | <a href="http://www.thermacell.com.au">www.thermacell.com.au</a>                           | 208          |
| TIMELESS INTERIORS              | 1300 133 326 | <a href="http://www.timelessinteriors.com.au">www.timelessinteriors.com.au</a>             | 117          |
| ULTRACOURTS                     | 03 8870 5988 | <a href="http://www.ultracourts.com.au">www.ultracourts.com.au</a>                         | 173          |
| VITALE                          | 03 9427 9966 | <a href="http://www.vitale.com.au">www.vitale.com.au</a>                                   | 124          |
| ZOKK                            | 0403 638 848 | <a href="http://www.zokk.com.au">www.zokk.com.au</a>                                       | 112          |



**Elements bricks.**  
for a stylish and  
uncomplicated existence.



**bricks.**  
style with  
substance

**Our Elements brick range is uncomplicated and never boring.**

With over 100 years manufacturing experience to our name, we're transforming the humble brick into a versatile and creative design material. Our contemporary brick products are all about style, combining form and function in an extensive range of colours, shapes and textures. Austral Bricks make a design statement that stands the test of time.

image. **brick.** elements **colour.** zinc **size.** 230 x 110 x 76mm

**australbricks™**  
since 1908

13 BRICK (13 2742)  
[www.australbricks.com.au](http://www.australbricks.com.au)

# Art for a



**Enjoy stunning pieces of art with no capital outlay with our art rental options.**

Complement a water feature or create a dramatic impact indoors or out, in your luxury home, corporate foyer or lavish development. Whether you're an architect, interior designer, developer, landscape designer or simply have a passion for beautiful objets d'art, you'll appreciate the way our unique pieces can transform a space.