

CUSTOM HOMES

2014



10TH ANNIVERSARY EDITION - LUXURY HOMES YEARBOOK

Beautiful and Award Winning Homes by WA's Premier Luxury Home Builders
Designer Kitchens and Bathrooms • Award Winning Pools • Stylish Interiors & Finishes



BENTLEY
Chellingworth

97-99 Stirling Highway
Nedlands WA 6909
08 9273 3131

www.chellingworth.bentleymotors.com



PORSCHE
Chellingworth

97-99 Stirling Highway
Nedlands WA 6909
08 9273 3131

www.chellingworthporsche.com



Horizon Roof Tiles - Sophisticated & Prestigious. Like the company we keep.

The sleek, sophisticated lines of the Horizon roof tile are designed to deliver a streamlined roof that integrates seamlessly with beautifully crafted homes of today.

monierprime™ are proud to supply roof tiles to builders of bespoke, prestige homes throughout Perth. Their stunning designs can be found in these pages.



A. DI BUCCI & SON
MASTER BUILDERS



RIVERSTONE
CUSTOM HOMES | EST. 1995



monierprime™

monierprime.com.au
08 9408 2400

La Escandella Ceramica.

ceramic roof tiles

Want to bring some Spanish flair to your new home?

Let your home revel in Spanish style & vibrance. La Escandella Ceramica is known for its rich colours and distinctive finishes, the stand-out in style against all other terracotta tiles in the Australian market.

Available in a variety of profiles and bold colours, La Escandella Ceramica offers a complete range of options to best suit your designer needs.



Phone 1300 274 784
www.bristilerooting.com.au

Indulgence. clay bricks

Savour every moment with the refreshingly rich and neutral tones of Indulgence.

Immerse yourself in Indulgence, a sophisticated new brick collection that will ignite your senses and leave you craving more. With five signature colours to pick from, the smooth and creamy tones of Indulgence offer an irresistible pallet of luxury and distinction.



Phone 13-BRICK (13 2742)
www.australbricks.com.au



Showcasing the largest range of window, door and glass options in WA. This fantastic resource for builders, designers and home owners offers the perfect place to select windows and doors that provide exceptional security, comfort from the elements and an alfresco lifestyle.



31 Sheffield Road (cnr Dampier Road) Welshpool Ph: 9351 3400
Opening Hours - Mon to Fri 8:00am - 5:00pm Sat 9:00am - 12:00pm

www.jasonwindows.com.au

The first door you should choose is the entrance to WA's largest Showroom and Selection Centre



**Open to the
public and trade
Monday-Friday
...and Saturday
'till noon!**



OUR LIFTS, JUST LIKE SOME PEOPLE'S PASTIMES, NEVER AGE

When you're the Big Kahuna, Grant Elevators will ensure your style will reign for a lifetime.

With 50 years of work in the industry, Grant has the experience to provide a custom-designed elevator to suit the individual specifications you and your home require.

Your unique style paired with a Grant elevator will make a statement as big as your first Malibu but you'll be glad to know the price won't.

Grant's dedication to personal service extends to our after-sales care that will keep your elevator in perfect condition – as you reach new levels of your home and new eras in life.

Our commitment to crafting, manufacturing, installing and servicing elevators has spanned a lifetime. With a Grant elevator, you'll find that your individual style can too.

To see our collection of customised elevators, visit grantelevators.com.au or call 08 9379 3465.

GRANT
ELEVATORS

Lift your style

AUSTRALIA'S PREMIER SUPPLIER O



- Imported Italian Furniture
- Lighting
- Sculptures
- Artwork
- Glassware
- Accessories
- Window Treatments

F EXQUISITE ITALIAN FURNITURE



www.sovereigninteriors.com.au

DELIVERY AUSTRALIA WIDE

Sovereign
INTERIORS



WA CUSTOM HOMES

Editor

Kandi Revian kandi@vipmarketing.net.au

Advertising Sales

Jennifer Preston jennifer@vipmarketing.net.au

Kristi Welyk kristi@vipmarketing.net.au

Administration & Accounts

Sharon Kullancherry sharon@vipmarketing.net.au

Assistant Editor

Bruce Kaplan

Graphic Design

Murray Jongeling

Cover Image

Cutting edge contemporary home design by
Maughan Building Company

WA Custom Homes

ABN: 52 759 917 462

Contact Us:

Ph 08 6270 6337

Fax 08 6311 7410

info@vipmarketing.net.au

www.vipmarketing.net.au

WA Custom Homes magazine is supported by the following leading building portals:

www.wacustomhomes.com.au

www.perthcustombuilders.com.au

www.perthbuilderdirectory.com.au

www.countrybuilderswa.com.au

Custom Homes publications include:



WA Custom Homes • Sydney Custom Homes • Melbourne Custom Homes
For more information see www.vipmarketing.net.au

DISCLAIMER:

WA Custom Homes magazine is subject to copyright, and the contents may not be reproduced in whole or in part without the express permission of the publisher. Although every effort has been made to ensure that the information contained within is accurate at the time of going to print the publisher accepts no liability for any errors or omissions or the consequences of any reliance upon these. The views and opinions contained within are not necessarily those of the publisher.

The Range



Real Flame are the industry leaders in fireplace design and manufacture. Conceived, designed, researched, developed and built in Australia. All of our products have been meticulously finished using only the highest quality materials, with style ranging from classic to contemporary. We have a fireplace that will add value, warmth and ambience to any home.

Head Office
1340 Ferntree Gully
Road Scoresby
T 03 8706 2000
F 03 8706 2001

Richmond VIC
300 Swan Street
T 03 9428 4443
F 03 9428 4445

Geelong VIC
2a Gordon Avenue
T 03 5229 0844

Chatswood NSW
654 Pacific Highway
T 02 8905 0189

Miranda NSW
36 Kareena Road
T 02 8513 6202

Dandenong VIC
9 Lonsdale Street
T 03 9791 9285

Norwood SA
173 Magill Road
T 08 8132 0371

Milton QLD
46 Douglas Street
T 07 3368 2011

Osborne Park WA
47-53 McDonald Steet East
T 08 9444 9900

Fyshwick ACT
88 Wollongong Street
T 02 6280 5522



www.realflame.com.au

real flame
the hearth of australia

**Leaders in
Gas Fireplace
Technology**

*Always
stylish...*



*...exciting
and inspiring*

Great Lighting Can Transform Your Home...
From Ordinary to Extraordinary



LIGHTINGALES

269 Stirling Highway Claremont 9383 1099

www.lightingales.com.au

Thank you from the Editor

This publishing game is hard, not too dissimilar to the building industry really.

There's a lot of competition and the only way to survive is to ensure that you have a consistently good product, keep in touch with industry trends and of course value your clients.

With that said, we are very proud to present you with our 10th annual edition of WA Custom Homes (previously InStyle) - an annual yearbook, showcasing stunning custom built homes by leading West Australian builders.

For this achievement we must give credit and thanks to our regular advertisers, many of which have featured in the magazine every year, which stands as a testament to their own businesses, having endured the recent tough economic times.

Of course we wouldn't still be here without you - our readers. So we'd also like to thank you, by continuing to bring to you each year the best building and design products to both excite and inspire you on your path to building the luxury home of your dreams.

*Kandi*_x





Look at you, all grown up.

Monte was found on a wet Sunday in the back of a Leura antiques store. He looked lonely, she felt sorry for him, so home Monte came (of course he was still called Horsey at that stage). The carpet covering the floor of his rather comfortable new stable is Galet, a chunky loop from our exclusive designer Bremworth Collection; 100% felted New Zealand wool and unbelievably soft. You can see the full Bremworth Collection product range at www.cavbrem.com.au or phone 1800 251 172 for store locations.



Luxury New Zealand wool carpet

Contents

Our 10th Anniversary series of 10

10 Award Winning Pools	pg 228
10 Fabulous Rugs	pg 174
10 Beautiful Baths	pg 210
10 Decorative Cushions	pg 180

Feature Custom Builders

Luxus Homes	pg 33
Pirone Builders	pg 41
Weststyle	pg 49
Spadaccini Homes	pg 57
A.Di Bucci & Son	pg 65
Maughan Building Co	pg 73
RiverStone Custom Homes	pg 83
Kensington Design	pg 91
Design & Construct	pg 99
Atrium Homes	pg 107
Zorzi Builders	pg 115
Zorzi South	pg 141
Tallwood	pg 149
Quaine Constructions	pg 157

WIN Designer Bathroom Products worth \$7500	pg 24
---	-------

Dream Location – Port Coogee	pg 134
------------------------------	--------



Add a touch more personality
to your home.



Meet Midland Brick's
Handmade range.



We call the deep rustic textures found on each brick in our Handmade range, 'character lines'. And that's just what they are. Every brick is individually formed, giving it its own unique personality. With distinctive colour blends to choose from, they're a perfect way to add character to any building.

Whether you're building a Colonial style home, a country retreat or a contemporary city apartment, our unique Handmade range

can help create a timeless and individual look. Plus, with all the qualities of natural clay brick, you can feel assured knowing the look will last from generation to generation.

For more inspiration and information about our unique Handmade range of bricks and pavers, call Midland Brick on **13 15 40**, visit us online at www.midlandbrick.com.au or drop into a Midland Brick Centre.

A **BORAL** COMPANY

Midland Brick

yael K

AWARD WINNING DESIGNER

Yael K Designs

BUILDING DESIGN | INTERIORS

Yael Kurlansky



WWW.YAELK.COM.AU

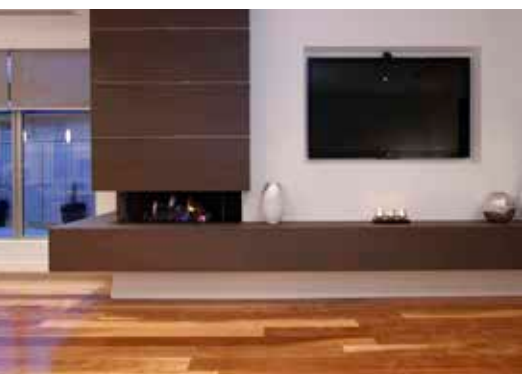
08 9381 5111 info@yaelk.com.au

A Fusion of Furniture & Art



The team at ARQ is passionate about helping you live life your way, by understanding your individual needs, desires and personal style.

With this in mind, we work with you to create custom furniture and unique artworks that are an expression of who you are and the way you live.



FINE LUXURY HOMES



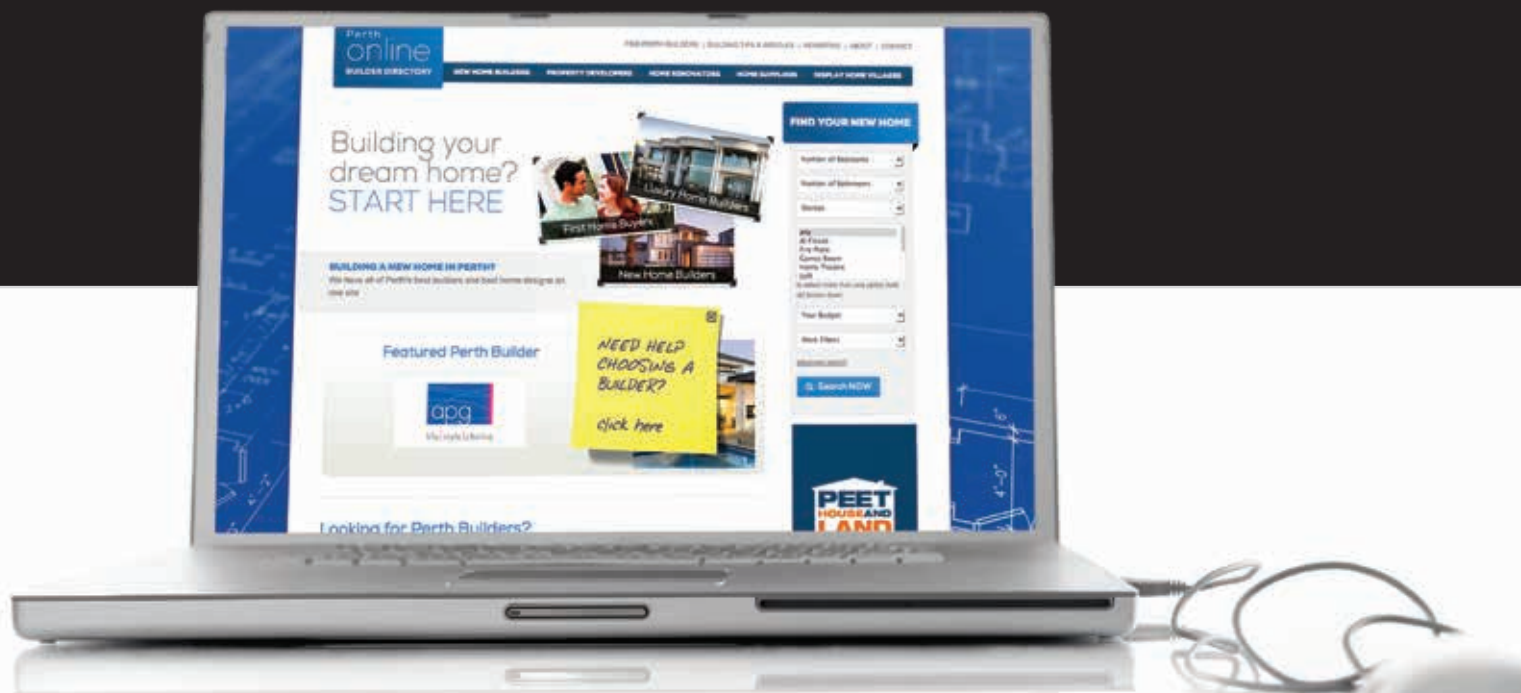


M E R E N D I N O

H O M E S Pty Ltd
Reg: 12187

PO Box 4111, Myaree BC WA 6960 • Ph/fax: 9317 7105
admin@merendinohomes.com.au • www.merendinohomes.com.au

Whether you're moving on up,
moving on out, first homing,
second homing, custom
designing a home, empty
nesting, investing, sea changing,
or room changing...



Perth
online
BUILDER DIRECTORY

find what you need on the all new
perthbuilderdirectory.com.au

Your new home or addition can be as individual as you are...



- Personal Design
- Sustainable Building
- Quality Craftmanship



Enjoy the flexibility of building with a family run business.

1300 048 531 www.corewa.com.au

WIN

We want to hear about your building plans...

So much so we're giving away a stunning Victoria & Albert Bath & Basin set and Designer Tapware from the English Tapware Co **valued at \$7500.**

Just complete our 2 minute questionnaire at www.wacustomhomes.com.au to enter the draw.



*see website for terms and conditions

victoria ⊕ albert®

— THE —
ENGLISH
TAPWARE
— COMPANY —

**DESIGN,
BUILD &
SAVE!**



RESIDENTIAL BUILDING BROKERS

DO YOU HAVE BUILDING PLANS AND DON'T KNOW WHERE TO START OR WHO TO TRUST ?

Speak to us here at Residential Building Brokers, we will source you the best construction price through one of our award winning builders.

Our unique tendering system allows us to negotiate the best building prices on your behalf, this is made possible via the volume of work presented to our builders. Call us now to see how we can help build your dream home.

T. 1300 769 976 E. INFO@RESIDENTIALBROKERS.COM.AU W. WWW.RESIDENTIALBROKERS.COM.AU



“BEST OF ALL,
OUR SERVICE IS
COMPLETELY
COMPLIMENTARY
IF YOU CHOOSE TO
BUILD THROUGH US”

FOR ENQUIRIES CALL US ON:
1300 769 976

Builders of Luxury Homes, Renovations, Commercial Fit Outs and Multi-Residential Developments and now building in the metropolitan area for selected clients.



Bunbury Unit 2, 27 Bonnefoi Boulevard
Perth Unit 3, 3 Pamment Street, North Fremantle

TALLWOOD CONSTRUCTIONS



Winner of 3 State and 21 South West HIA Awards in the last four years including,



- 2013 Renovation/Addition Project \$500,001 and Over
- 2013 Renovation/Addition Project \$500,001 and Over
- 2013 Renovation/Additional Project of the Year
- 2013 Special Purpose Housing Project of the Year
- 2013 Outdoor Project of the Year
- 2013 Renovation/Additional Project of the Year
- 2013 Special Purpose Housing Project of the Year
- 2013 Outdoor Project of the Year
- 2011 State Country Home of the Year
- 2011 State and South West Innovation in Housing Project of the Year
- 2011 South West Home of the Year
- 2011 South West Renovation of the Year
- 2011 South West Outdoor Project of the Year

Alex 0427 568 214
alex.c@tallwood.com.au
www.tallwood.com.au

Thinking of building or renovating? **Think Cassari...**



With 30 years combined experience in the building industry we know our reputation is built on quality workmanship and exceptional customer service.

Whether a small renovation or luxury custom built home we treat each project we undertake as though it were our own, providing you with a 100% commitment to deliver an outcome we are all proud of.

Our experienced team love challenging projects, we thrive on complex designs and difficult blocks.

**We look forward to discussing your unique project requirements with you.
Call us today on (08) 9203 9006**



Quality workmanship



Fair pricing



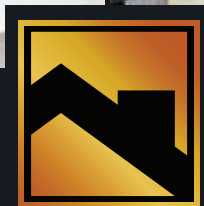
Superior face to face customer service



Timely construction



100% commitment



CASSARI GROUP
NEW VISION OLD VALUES

Ph: (08) 9203 9006

Fax: (08) 9243 5004

info@cassarigroup.com.au

P.O.Box 1267, West Leederville, WA 6901

www.cassarigroup.com.au

Cassari Group Pty Ltd

more than your average builder...



Big on style.
High on performance.



Large format pavers,
by Midland Brick.



When you're after quality, style and outstanding value, our large format masonry pavers are an easy choice.

Predominantly 300 x 300mm, each paver offers clean contemporary lines in a variety of styles and finishes. So when it comes to matching the right paver to your project, the possibilities are endless.

Be sure to check out the newest addition to our range – Granite Pave.

It cleverly combines the contemporary look of exposed aggregate with the advantages of paving – including impressive uniformity and consistency of colour and texture.

For more information about our Large Format Masonry Pavers, or any other product from our extensive range of bricks, blocks, pavers and retaining walls, call Midland Brick on **13 15 40** or visit us online at www.midlandbrick.com.au

A **BORAL** COMPANY

Midland Brick



image courtesy of Grandwood by Zorzi

A modern, multi-story house at night. The house features large glass windows and a balcony with a glass railing. The interior lights are on, and the balcony is illuminated. In the foreground, there is a swimming pool with a blue mosaic tile border. The sky is a deep blue, and the overall scene is lit with warm, ambient lighting.

Perth Custom Builder Features

A showcase of stunning homes from some of Perth's most prestigious and award winning custom home builders.

The smart way to build

Make big savings on building and energy costs while doing your bit for the environment with this remarkable building system

The Thermacell system is an exceptionally strong system, with fantastic insulation properties. Our blocks have been cyclone rated, and have been used for new houses, high wind areas, load bearing walls, multi-storey buildings and factories.

Visit the Thermacell website to learn more about the product that's revolutionising the building industry and letting Australian ownerbuilders create the homes of their dreams.



THE ORIGINAL AND THE BEST

PO Box 447
Somerville VIC 3912
Phone: 03 5977 7996
Geoff Bennett: 0414 664 500
David Bennett: 0412 577 431
Email: info@thermacell.com.au
Website: www.thermacell.com.au

LUXUS
HOMES



Sophistication and Luxury

In an unmistakable celebration of innovative architecture and design this state of the art contemporary home by Luxus Homes is a showcase of sleek aesthetics infused with timeless modern elegance.

Constructed to fit the specifications of a narrow site, this superior residence epitomises sophistication and represents the upper echelons of luxury.

The home displays an extraordinary array of breath taking features and architectural points of difference, which can only be offered in a home of this calibre.





The Dalkeith residence makes a style statement from the outset with feature limestone cladding on both sides of the front façade, a brushed stainless steel fascia over porch and balcony, Koi ponds wrapping around under the entry and large granite stepping stones delivering you to the beautifully crafted timber pivot door.

The limestone entrance continues seamlessly through the home into the main living area which features an open plan kitchen, dining and living area. The kitchen cabinetry showcases a combination of the timeless, natural beauty of new age veneer and pure white lacquer, and all cupboards and drawers are fitted with premium soft close hardware and recessed satin metal finger pull grips for a sleek and streamline appearance.



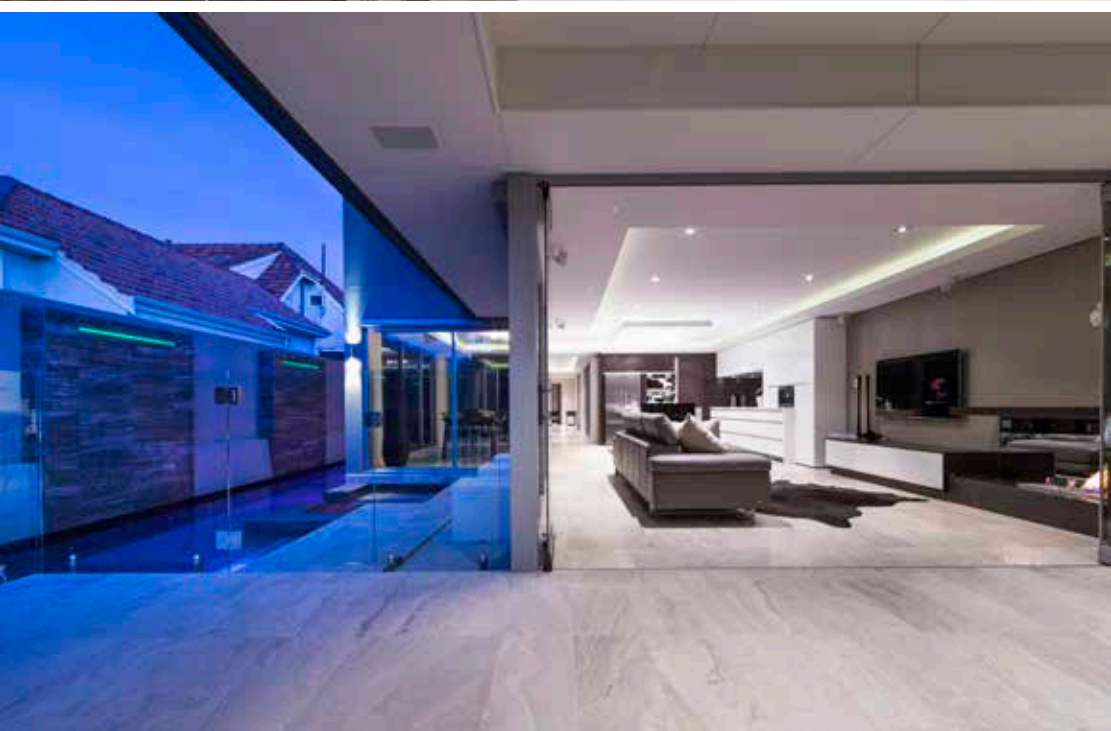


The striking central island bench is topped with classic white Caesarstone and the kitchen is completed by a suite of first rate European appliances.

The new age veneer continues into the living area and the eco-smart fire atop a stone plinth provides a sense of warmth and raw beauty. The use of frameless bi-fold doors further extends the open plan layout into the outdoor alfresco again transitioning seamlessly with the external sandblasted limestone tiling.

Outside, the finish of the 20m long resort inspired lap pool and spa is exemplary, with five soothing water blades adding to the tranquility and large pool and spa steps feature sandblasted limestone while the pool itself has been finished using a dark brown metallic mosaic tile.





Upstairs in the home, a frameless glass wall and cavity sliding door separates the master bedroom and ensuite in the home. The feature tiling resolute free-standing stone bath hides the shower and toilet and the two single vanities are beautifully finished with stone, lacquer and stainless sanitary ware.

The custom designed 1100 bottle capacity cellar features a combination of both front and side facing wine racks, a huge sliding 3-door bar fridge and the mirrored and textured laminate panels finish the room impeccably and provide a sense of grandeur to the room.

Next to the cellar is the theatre which features a cantilevered wall cabinet complete with a 100 inch screen and stadium seating perfect for entertaining guests or having the night in.



The team at Luxus Homes is dedicated to achieving an exceptional finish in every residence by focusing their time and energy on each individual project and by using only the highest quality trades and materials.

Led by director and registered builder Russell Manger, the Luxus Homes executive team have over 60 years collective experience.

It is the team's unyielding commitment, absolute integrity and proven track record that has established Luxus Homes as a highly reputable builder of unmistakably opulent homes.



Suite 23, 513 Hay Street
Subiaco WA 6008

P 9388 8812

F 9388 8824

luxushomes.com.au

info@luxushomes.com.au

PIRONE

BUILDERS

A REPUTATION BUILT ON QUALITY

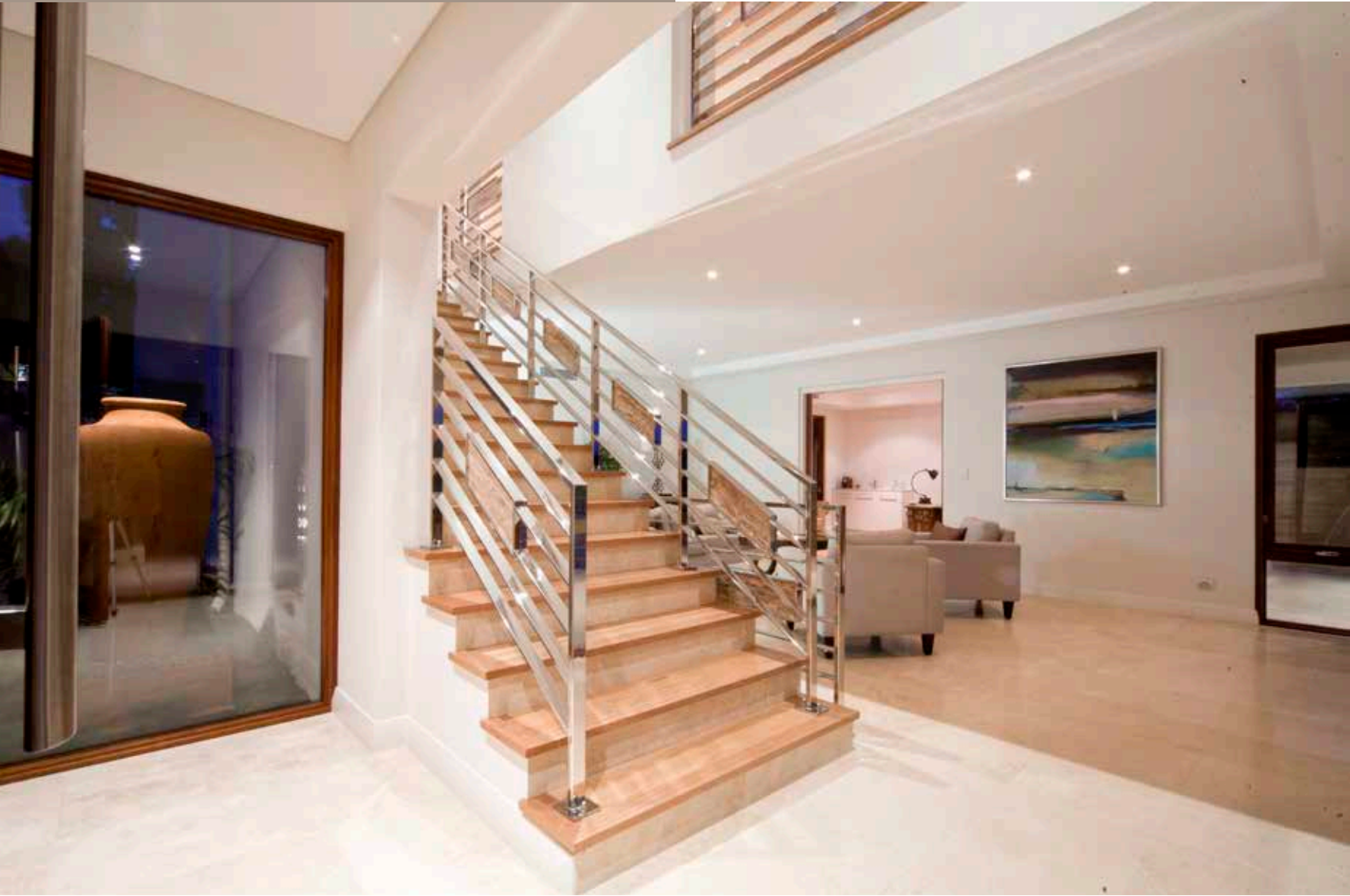




Dazzling Duo

Their reputation as one of WA's most prestigious luxury home builders rewarded Pirone Builders with the contract to build these two stunning residences in Mosman Park by Prestige Property Group.

Architect-designed, built to the highest quality specifications, and featuring a carefully selected blend of exotic timbers and imported marble, every luxury has been catered for in these elegant homes. Located side by side in an elevated position, both homes take in stunning panoramic views of the Swan River.



This sophisticated contemporary home presents a lifestyle opportunity reserved for the select few.

Impressive in both style and finish, the home offers picturesque 180 degree river views. Once again, the line between indoor and outdoor living is blurred by opening the glass stacker doors between the living areas and the spacious upper terrace where the views dominate the entire space.

The gourmet custom-made Effetti kitchen is an entertainer's dream, complete with integrated Gaggenau appliances including induction cook top, oven, steamer, microwave, two dishwashers, dual sinks and motorised drawers. The separate scullery area includes personalised carved drawers for the pots, pans, knife set and utensils.





A large pivot door opens to the master bedroom, giving the impression of entering a luxury hotel suite. The stunning adjoining ensuite offers heated marble floors, Carrara Grigio marble benchtop and a tiled feature wall. The superb dressing room, with its immaculate fit out offering a large choice of storage options, is a fashion enthusiasts dream.

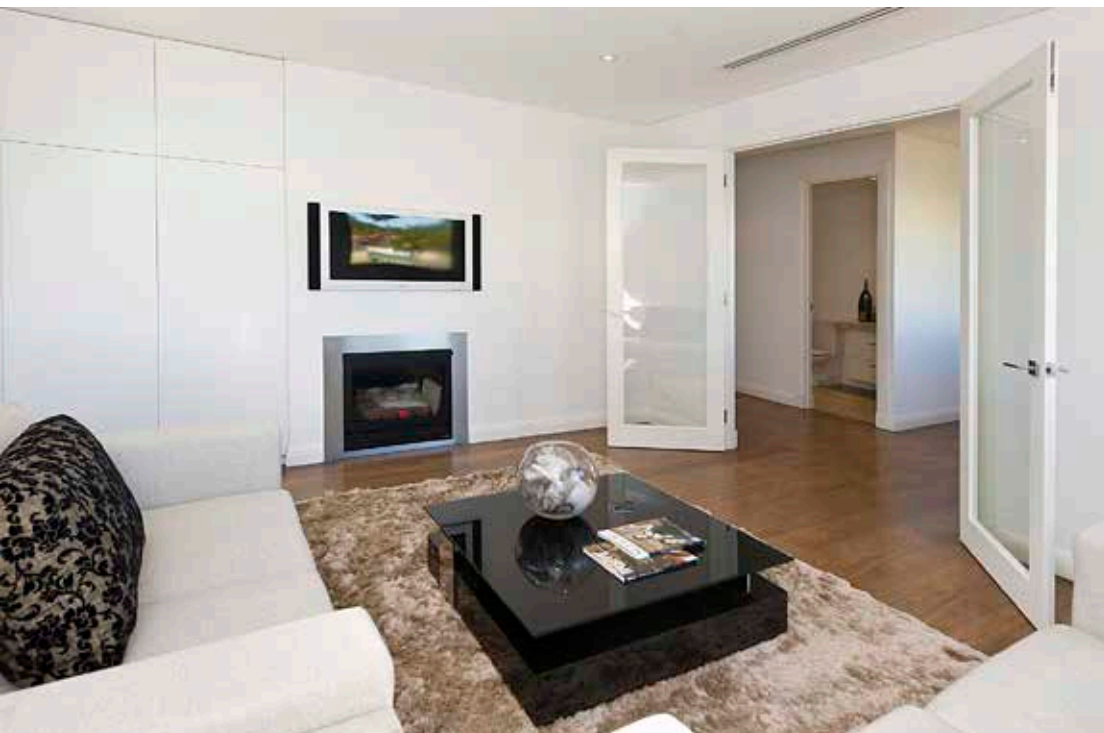
The views can be enjoyed from almost every room, including the home office. From here, there's direct access to the shady terrace which can also be accessed via the theatre room and fourth bedroom. Flowing down from the terrace is a private garden retreat where one can bask in the sun & once more enjoy the river views.

In total, the home includes a total of four bedrooms, each with ensuite bathroom, formal lounge with fireplace, family living room, lift, 4-6 car secure garaging, reverse-cycle air conditioning, security and ducted vacuum system.



Delivering the ultimate in luxury city living, this beautiful home has the welcoming ambience of an opulent retreat.

While huge floor-to-ceiling windows deliver spectacular river views as a stunning backdrop for the open plan living area, throw open the timber-framed bi-fold doors to the large balcony and a seamless flow between indoor and outdoor living is instantly created.



Custom-made in Italy, the large entertainer's kitchen features integrated European appliances, exquisite Carrara marble benchtops and quality timber cabinets with a vast array of storage options. Banks of wide timber drawers even include dedicated space which has been customised for the storage of knives and utensils.

The spacious, deluxe master bedroom adjoins a beautifully-appointed ensuite with an exquisite dual vanity, tiled feature wall and deep bath for relaxation.

On the lower floor, the home offers a lounge area outside the office, plus an activity room for extra family living space. There are a further three large bedrooms, all with ensuite bathrooms plus two powder rooms, all with top quality fittings. Extras include a lift, loggia, 4-car garage and reverse-cycle air conditioning throughout.



Pirone Builders specialise in luxury custom-built homes and commercial developments, constructing only a select few projects each year to ensure their exacting quality standards are always maintained. What sets them apart is the personalised involvement of Mario and Adrian Pirone, who together share a combined 65 years professional building experience. Mario and Adrian insist that attention to the finest details is paramount to their success.

PIRONE
BUILDERS
A REPUTATION BUILT ON QUALITY

Suite 1, Level 1, 8 Commerce Street
Malaga WA 6090

P 9248 6399

F 9248 5189

For personal service

please contact Adrian Pirone 0417 919 715

pironebuilders.com.au

adrian@pironebuilders.com



EST. 1968

WESTSTYLE
DESIGN & DEVELOPMENT

Top of the world

An easy-to-navigate, calm and relaxing house on a hill for a busy professional couple with three small children, sounds like an easy enough brief.

But with the chosen site having a 14.5 vertical drop, 40-degree sloping terrain, and a dune sand soil classification, things became more awkward.

Boutique design and building firm Weststyle met the clients on site, and discussed construction and design options. The result is a bold, modern home with clean lines that display both outstanding creativity and clarity of purpose in this challenging Wembley Downs location.

A dramatic cut was made into the site, with cranes used to obtain a workable platform as a canvas for the home. Significant terracing and retaining walls enabled the house to slot perfectly into the hillside, offering peaceful views over a valley of lush green treetops. It feels like being in an elaborate tree house, you feel as though you are on top of the world.

The top level provides the street entry point to the home – understated as the owners requested and respectful of the context it was built amongst. At the 'back' a lightweight portal frame cantilevers over the lower ground levels, protecting a spacious alfresco area, alongside a timber sun deck and seamless 13-metre infinity edge lap pool. A further landscaped garden and open grassed area designed for the children is also located on the lowest tier.

Strong, crisp lines both horizontal and vertical, showcase the bold upper level and which contrasts the textural features of limestone and render that blend the lower levels into the environment, providing visual softness for those who gaze up from below.





Inside, travertine flooring compliments this natural easy look in a light and fresh open-plan ground-floor living/dining/kitchen area. The kitchen benches are reconstituted stone. The cabinets are a combination of lacquer timber veneer, a consistent theme of materiality repeated throughout the home.

The stylish staircase leading to the upper level starts with a stone plinth before floating jarrah treads on a steel spine takeover. Additionally a handrail of moulded jarrah curves around a custom piece of freestanding glass.





The home has six bedrooms, three bathrooms and two powder rooms. Two bedrooms on the ground floor allow plenty of space for unexpected visitors or children's future 'sleepovers'.

At the top of the stairs, a sitting room is hidden behind a stylish white lacquer bookcase with an unexpected and striking red feature. It's a place to relax and enjoy life.

Given the site access difficulties the project took into consideration minimising future maintenance, including the use of Alucabond, traditionally a commercial material, to create a strong statement with its dark charcoal colour as external cladding to the home. Naturally a painted finish in this application would present as an expensive and inferior option years down the track.





The Future of Weststyle

Weststyle's future looks bright and exciting. Leaders with vision are driving its evolution into a boutique design and building firm.

Weststyle provides a comprehensive design and building service with in-house designers and interior architects to guide clients through the entire process from concept to completion.

Weststyle is relentless in its mission to create truly exceptional fully custom-designed homes that are innovative and designed for the owner.

WINNER - Small Lot Housing

FINALIST - Small Lot Home of the Year

FINALIST - Custom Built Home
(\$475,001 - \$625,000)

FINALIST - Custom Built Home
(\$1,000,001 - \$1,600,000)

FINALIST - Townhouse/Villa

FINALIST - Spec Home

FINALIST - Excellence in Service (Small Builder)



EST. 1968

WESTSTYLE
DESIGN & DEVELOPMENT

5/103 Erindale Rd
Balcatta, WA, 6021

P 9345 1565
F 9240 1103

weststyle.com.au
gavin@weststyle.com.au







When only the
best will do

Multi-award winning builders, Spadaccini Homes, have established an outstanding reputation as one of Perth's, and indeed, Australia's best boutique builders.

Their team are passionate about crafting distinctive, quality homes, finished with an immense sense of pride and meticulous attention to detail. It is this philosophy which draws discerning clients to Spadaccini, time and again.



The company recently constructed this superb split level architecturally-designed home in Perth's prestigious Peppermint Grove. Featuring clean contemporary lines, the home's imposing façade showcases a distinctive central stone-clad plinth and polished plaster feature wall.

Sleek and minimalist, this distinctive home offers stylish open plan living at its very best.

Alfresco entertaining is a clear priority, with large banks of bi-fold doors which open the rear of the home to the outdoors and allow for effortless entertaining by the pristine pool with its trickling water features. The spacious ironwood timber deck features an outdoor kitchen, complete with barbeque, and a remote louvered roof to make the most of all weather conditions.

Superior finishes throughout the home include pitched-face marble cladding, which is used extensively as a feature in the gate house, entry lobby, lounge and tennis court pavilion.

The over-sized master bedroom offers beautiful stone-clad feature walls offset by timber veneered cabinetry. Light floods into this peaceful sanctuary through the large double-glazed doors which open onto the private balcony.

In total, this outstanding contemporary home features four bedrooms, four bathrooms, a study, powder room, home theatre, games room, library and a large leafy courtyard.



Compact Luxury

Proving that size is no barrier to style and sophistication, Spadaccini Homes present this recently constructed Karrinyup property.

Set on a 550 square metre block, this home is a statement in quality, class and opulence.

Entertainers will adore the glossy lacquered designer kitchen which offers every convenience, including integrated European appliances, vast storage options and a walk-in pantry complete with copper wine racks extending along an entire wall.

Working from home would be an absolute pleasure in the magnificent office, with its stunning custom-made, book-matched veneer desk and cabinets.





A stylish contemporary tiled fireplace is the centrepiece of the sunken lounge room, while stepped cornices with feature lighting highlight the ceilings in this room, the family living area and sunken lounge room, as well as in the entry.

Precision skills were required to achieve the outstanding finish to the exquisite feature wall tiling in the ensuite. The amazing result is once again a testament to the craftsmanship the Spadaccini team is renowned for.

An attractive landscaped lap pool stands to the rear of the home, offering a refreshing dip to cool down on warm sunny days.

This elegant home consists of a total three bedrooms, two bathrooms, office, powder room, home gym, two living rooms and ducted air conditioning throughout.

Both clients were extremely happy with the results Spadaccini Homes were able to achieve through a process of close consultation, working tirelessly with sub-contractors and ensuring the highest level of quality workmanship were maintained at all times throughout the building process.





With a passion for superior quality in all their projects, the Spadaccini team believe that every house they build should be a home their Managing Director Rob Spadaccini would be proud to live in. They have a source of excellent, dedicated tradespeople at their fingertips, many of whom have been with the company since its inception in 1997.

It is this total dedication to craftsmanship that has seen the team reach the pinnacle of the industry, winning numerous industry awards from both the Masters Builders Association and the Housing Industry of Australia.



95 Guthrie Street Osborne Park WA 6017

P 9445 8888

F 9445 8877

spadaccinihomes.com.au

info@spadaccinihomes.com.au



A. DI BUCCI & SON
MASTER BUILDERS



Ocean Synergy

Optimising the stunning Indian Ocean views was a key objective in the completion of this unique and imposing two-storey residence in beachside Hilllarys by award winning builder A. Di Bucci and Son.

The home sits perfectly in synergy with its coastal location and maintains luxurious finishes throughout, from the front façade of grain-matched, stone clad walls, right through to the impressive rear entertaining area and shimmering swimming pool. The harmony with its environment can be attributed to a clever mix of neutral materials that provide the home with a light and airy ambience.

Wide stepping stones and washed aggregate adorn the entry walkway, reminiscent of the home's beachside surroundings. Horizontal and vertical aluminium joinery lines complement the sloping central bulkhead and stained plywood linings to provide this home with a distinctly contemporary feel.

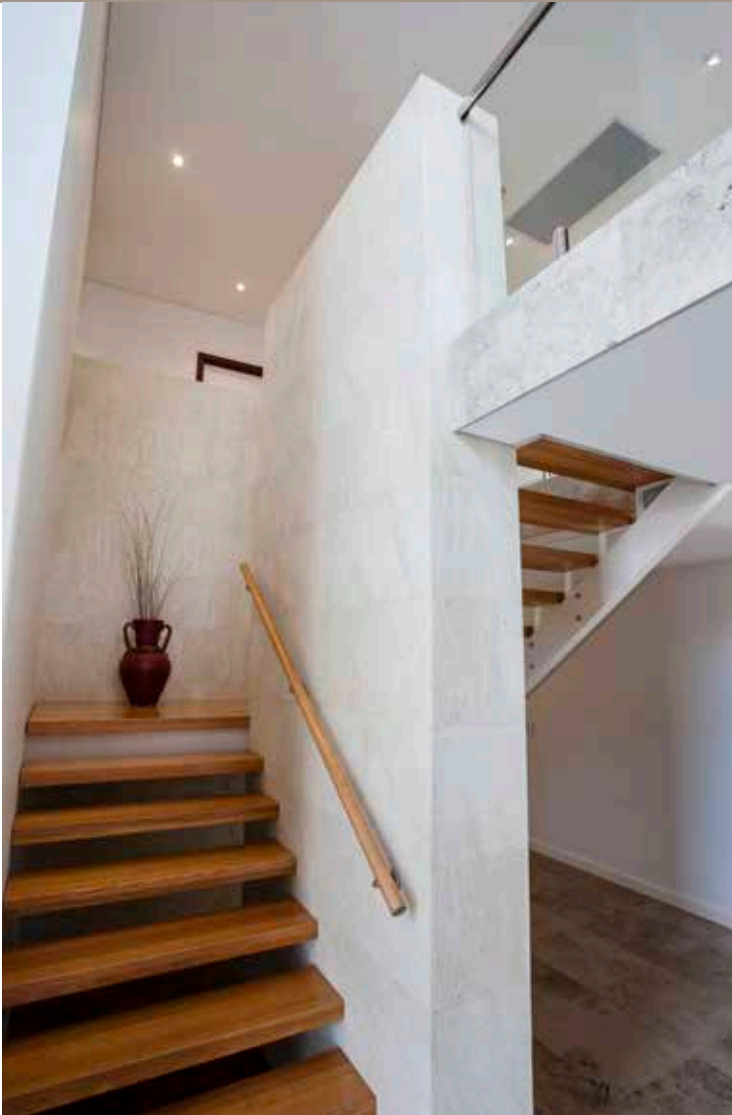






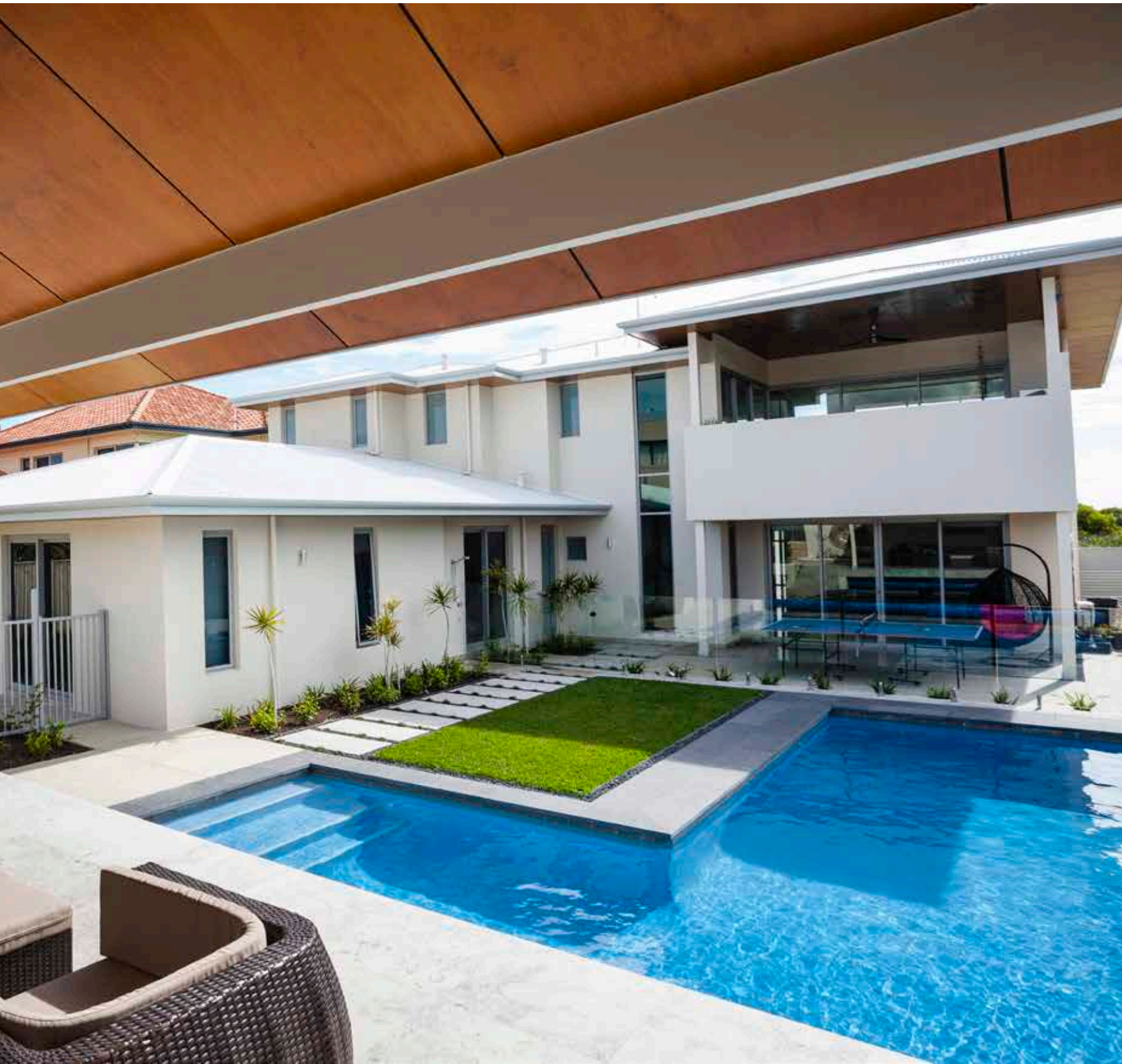
Superb natural patterned stone floors feature inside the entry, while open riser solid timber stairs invite guests to explore the upper level of the home.

The sleek modern kitchen, offering clean lines with crisp white cabinets and timber contrasts, is well-appointed with top quality appliances, including a floating stainless steel range hood. Raked ceilings over the dining area provide a feeling of space and light, while the eye is drawn towards the ocean views beyond by the extensive use of full-height windows. Stylish perforated ceilings and a chic wall-mounted fireplace feature in the adjoining family room.



The master bedroom offers special sound-proofed walls and includes an opulent open plan ensuite with elegant polished stone floors, a deep relaxing bath and floating timber vanity.

Beyond the frameless glass pool fence, alfresco entertaining is fully accommodated in the elevated pavilion, complete with outdoor kitchen offering a barbecue, stainless steel splashbacks and fridge. Functional yet stylish in its construction, the pavilion features negative-joint stained plywood ceilings.



Expert craftsmanship and attention to detail is evident throughout the home, including negative P50 cornices, a lift, glass balustrading, air conditioning and premium quality materials.

The unique blend of modern building materials, innovative construction techniques and state-of-the-art design has culminated in the ideal dream family home for the owners and an exceptional showpiece of construction for the builders.



With a combined 65 years industry experience, Amico (Mick) Di Bucci and son Greg have firmly established an unrivalled reputation for excellence, high quality craftsmanship and the finest luxury home construction, from classic designs to modern

masterpieces. Not just once, but seven times, the company has been awarded the Master Builder's Top Home of the Year in WA, providing clear testament to the enduring quality and master craftsmanship of the A. Di Bucci & Son team.



A. DI BUCCI & SON

MASTER BUILDERS

PO Box 479
Morley WA 6943

P 9275 2526
F 9375 1212

adibucci.com.au
dibucci@bigpond.net.au

MAUGHAN

Building Company

Let There Be Light

This cutting edge contemporary home showcases all the important elements of modern architectural design.

There is a combination of both strength and lightness in the structure, with clear angled horizontal lines and slim vertical lines drawing your eye towards the airy open plan living area.

A spherical opening on the upper level allows additional light to enter creating a connection to a daytime blue sky or luminous night sky.

This lightness in design is also reflected in the stunning glass windowed, mosaic swimming pool, that draws you in and invites you to enter into the luxurious and opulent interior of this spectacular home.





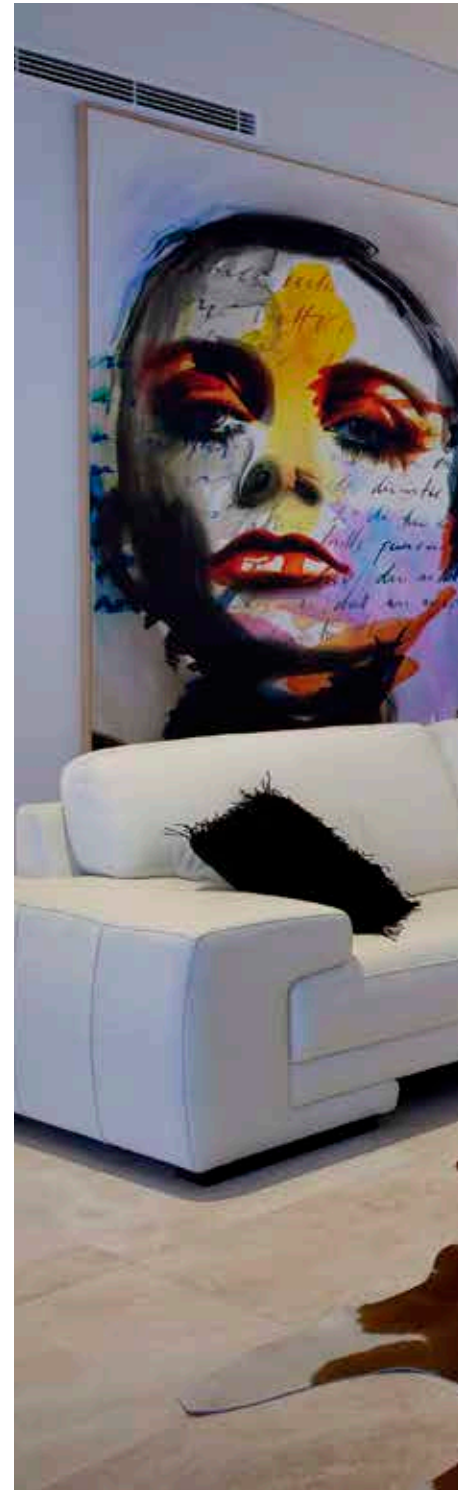
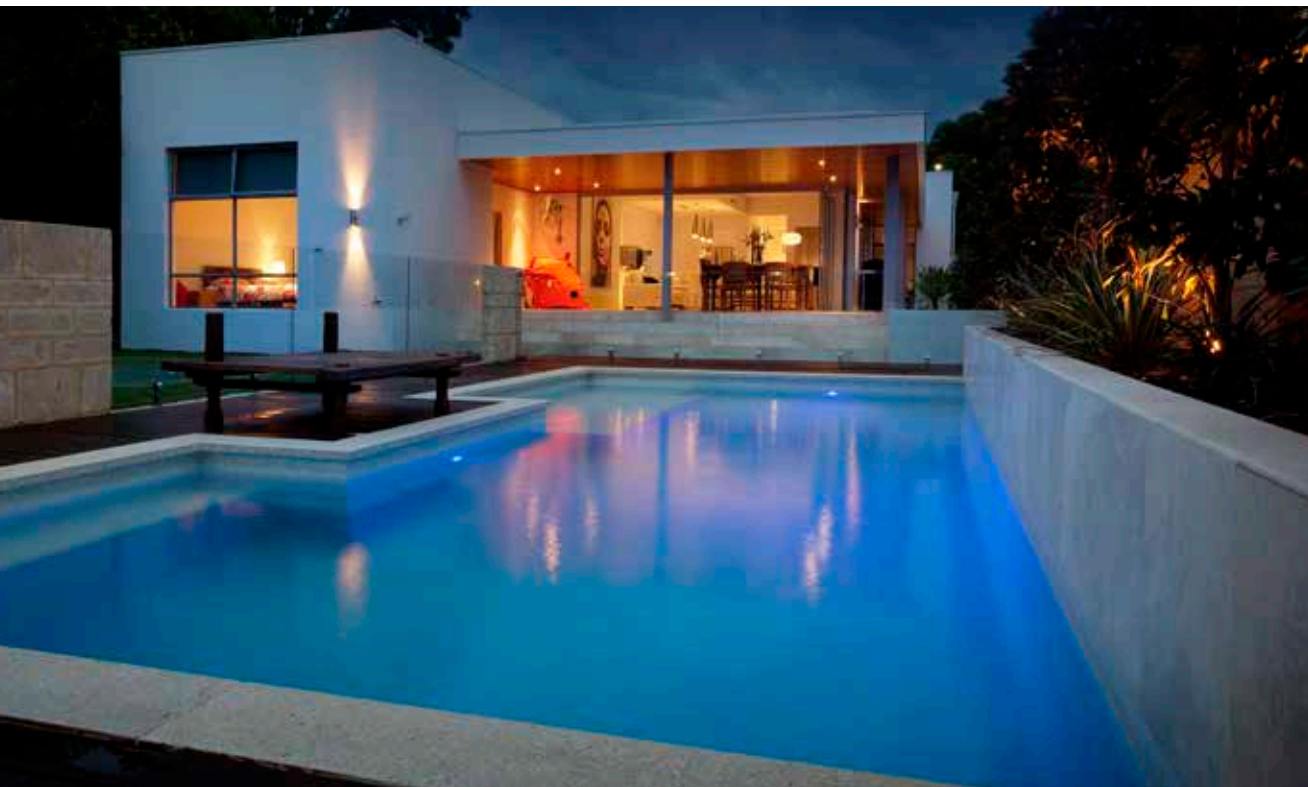




In signature MBC style, this home features a stunning front entry, that only hints at the opulence inside. Unique materials and finishes include a stone beam that leads you from the front entry right through to the rear of the open plan living area, positioned to take best advantage of the Northern aspect. Incredible 4 meter high stacking doors open the house onto an alfresco and pool area.

The impressive master suite boasts luxurious features including a freestanding bath tub which overlooks a second outdoor shower, perfect for those hot summer nights.

And, if that's not enough impressive features, this stylish home boasts an undercroft three car garage, plus a substantial storage area. The unique design allows you to turn your vehicle around and drive out forward rather than back up the steep driveway. Not that you'll want to leave this amazing home too often.



Built for a family with two growing children and a love of the outdoors, this Bicton home combines a sleek modern style, and innovative architectural features which not only awarded it a major Housing Industry Association Award but also won praise from judges as 'an exceptional home' ... 'with impeccable attention to detail'.

Sophisticated in their simplicity, the home incorporates a range of clever design principles such as living areas that make the most of northern light, minimising the use of artificial lighting, along with well-placed windows that provide natural ventilation, enhance the homes environmental efficiency.

Other clever design aspects include a commercial-grade flat roof concealed by sleek fascia's that allow solar panels for both pool and home to be incorporated without compromising design aesthetics.

From the sleek open plan living areas, glass bi-folding doors provide a seamless transition to the alfresco area that overlooks a stunning 10m swimming pool and compliments the families outdoor lifestyle.



Winner 2012 HIA Custom Built \$625,000 - \$800,000

HIA Finalist 2012 Perth Custom Built Home of the Year

HIA Finalist 2012 Peter Overman award for Perth Innovation in housing project of the year,





From the front timber decking that leads you past a stunning water feature, right through to the alfresco area, this cleverly designed home has all the elements of a modern luxury home without the burden of a massive carbon footprint.



Building your dream home is a personal experience which is why Rob Maughan is personally involved in each and every home built by Maughan Building Company, visualising and planning each individual detail with the client to ensure an exceptional outcome and 100% client satisfaction.

With initial plans of following his family roots in farming, Maughan built his first home, a mud brick dwelling, on his father's farm in the WA wheatbelt. This early experience led to his passion for building and may be the key to the environmental values he expresses with all his design and construction work.

An astute understanding of function and form, fuels his passion of combining energy efficiency and sustainability with cutting-edge architectural enhancements and contemporary design principles. Says Maughan, " I liken building design to poetry - you might start with the same material but it's the order and combination you put them in that creates something special"

Maughan is an official judge for the Housing Industry Association, and built a solid reputation working with other leading industry brands before forming Maughan Building Company.

The accolade's he's received to date are a testament to his skill and vision.



P0 Box 540, North Fremantle
Western Australia 6159

P 08 9335 5632
F 08 9335 3672

www.maughanbuilding.com.au
sales@maughanbuilding.com.au



Nothing beats the look of
a beautiful timber floor



Your timber flooring experts, providing quality workmanship & service excellence.



CLASSY TIMBER
FLOORING
WE COME TO YOU

www.classytimberflooring.com.au 0414 252 997



RIVERSTONE
CUSTOM HOMES | EST. 1995

BUILD WELL | LIVE WELL



WEST HAMPTONS
DISPLAY HOME
RIVERSTONE
10000 WEST HAMPTON TOWN

Enjoying Life's Moments

RiverStone understands that home really is where the heart is. That's why its individually designed homes, such as this stunning West Hamptons showcase in Swanbourne, are proving so popular.

Inspired by the warmth and casual sophistication of the Hamptons, this is a home to enjoy with family and friends. Suiting the relaxed West Australian lifestyle to a tee, it has a welcoming sense of style that starts outside with the weatherboards, mouldings and pretty porch. Inviting spaces and elegant detailing draw you in and before you know it you're feeling right at home.







Memories are made in living spaces such as these. The relaxed open-plan design encourages everyone to come together, whether your kids are toddlers, teens or older, and grandparents will love the fact there's plenty of space for energetic little visitors. At the same time, individual spaces feel intimate, comfortable and welcoming. From reading quietly or enjoying a glass of wine in front of the fire, to playing with the kids or chatting with friends, the West Hamptons appreciates the everyday moments you enjoy the most.

In the family room, a double-storey void and soaring chimneybreast emphasise the great sense of light, height and volume in this bespoke home, while beautiful timber panelling and built-in window seats reflect iconic Hamptons styling. Upstairs, the children's playroom or second sitting room

features a cleverly designed floor-to-ceiling bookcase with a clear Perspex backing to help keep the happy sounds of activity from filtering down to the living area below.

It may have been inspired by New York's ritzy summer playground, but this home has been designed to make the most of our wonderful Western Australian climate. Extra-tall sliding doors open up the living space to a shimmering blue pool and a stylish freestanding cabana for alfresco dining and general lounging around. And when it's time to call the kids in, they can come straight into the downstairs bathroom for a post-swim shower.

Even furry four-legged members of the family get a wash and brush-up at the dog-washing station in the laundry.



Capturing the artistry of Hamptons-style detailing, a gentle arch frames the heart-of-the-home kitchen. It's here that you'll enjoy your early-morning coffee in the breakfast nook, bake cookies with the kids at the vast island bench or rustle up a family roast. The simplified Shaker-style cabinetry is perfectly in tune with the home's glamorous beachside look, while the adjoining scullery is a must-have for today's busy families.

Chosen for both its performance and supreme good looks, the top-of-the-range engineered wood floor in Royal Oak is beautiful, hardwearing and easy to look after. It's the perfect complement to the crisp white mouldings, timber panelling, deep skirting boards and timber windowsills that help define the Hamptons style.



Three bedrooms and three bathrooms mean this is a house for the long-term, no matter how old the kids – or grandkids – get. An indulgent bathroom and fully-fitted dressing room are included in the master suite, while the landing has been neatly turned into a reading area complete with a stunning walk-through bookcase and a window seat that invites you to stop awhile and take time out.

The youngest members of the family have their own wing, with two generous bedrooms off the upstairs sitting room that's perfect for play, study or hanging out with friends. On the first floor, a large den is the place for hobbies or a home-based business and can quickly be turned into a fourth bedroom when guests come to stay. And they will want to stay.



Not only has RiverStone paired old-school detailing with modern living to create the West Hamptons, but the luxury homebuilder has also made sure it's as easy as possible to get the look you love. What you see really is what you get, with a long list of features included in the price, from the stunning fireplace surrounded by stone and white-painted wood, to the Quantum Quartz benchtops, timber flooring, wood panelling, bookcases and window seats.

Whether it's sophisticated beachside chic, uber-edgy urban or classic European, RiverStone brings an unerring eye for detail and quality to each and every project. And, like the West Hamptons, their homes can be designed as a complete package so that there's nothing more to do except move in.

Leaving you to enjoy life's moments.



Suite 44 Cottesloe Central Shopping Centre
460 Stirling Highway Peppermint Grove WA 6011

P Sales 9436 9696
P Office 9284 4866

riverstone.com.au
reception@riverstone.com.au





Small Block, Big Ideas

A gabled cottage built with an aesthetic mix of timber weatherboards and limestone walls. A 'secret garden' courtyard facing north that invites long afternoon conversations while drinking wine from your own cellar. These are just a few of the charms of this romantic house in Silas Street, East Fremantle.





The owners, two parents with two adult children downsized from a large home on acreage in the Perth Hills. Even though they chose to make this “city change”, they wanted to maintain elements of their rural lifestyle including an open interface with the outdoors and privacy from neighbours and street. And of course, four adults wanted some separation and privacy for themselves within the house. Then there was storage to consider, including a large wine collection.

The other challenge was an atypical, narrow triangular shaped block of only 285 square metres on a busy corner location.

The Kensington Design response is deceptively simple. The entire house is only one room wide with an ‘L’ leg at the wide end of the site and an upper story set back to minimize overshadowing. Yet this captivating compact house has the spacious feel and connectivity of a larger dwelling.

Upstairs are attic-style bedrooms, with a stairway at each end of the house providing independent access and the necessary privacy for everyone. A library-study adjacent to the sumptuous master suite ensures a quiet retreat for parents. French doors open to an enchanting Juliet balcony to catch the winter sun or to sit and enjoy a morning coffee. Downstairs there is a discreet guest powder room and bathroom for the children.



The ground floor central area is a friendly open-plan family space for all to share. Natural stone tiles on the floor and kitchen bench tops offer a timeless elegance, and whitewashed rough rendered walls and timber joinery enhance the country cottage feel.

There is ample dining room space for up to 14 people to sit at the regular formal tastings of wine brought up from the unique underground cellar with its curved brick vaulted ceiling.





The living areas open out to the secluded garden with its high limestone walls and arched gateway entry.

Passive solar design, low E glass and excellent cross-ventilation through doors and windows to take advantage of the cooling sea breeze also contribute to the liveability of this home. They are just some examples of the thoughtful environmental features that make up this little gem.

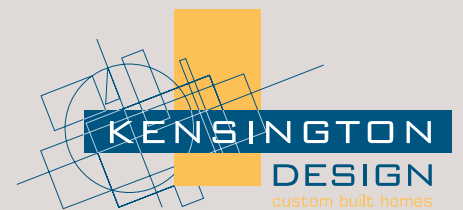
The home is completed with a boxroom for storage and a carefully detailed and cleverly oversized single integrated garage.



The five dedicated professionals that comprise Kensington Design are renowned for their creativity and their personalised and meticulous attention to detail. They undertake only a small number of projects a year with the object of providing the best possible service. In 2012 they won four Housing Industry Awards, including the

Western Australian Housing Award for the Special Purpose Housing Project of the year.

Since first entering awards competitions in 1992, the company has received more than 70 awards and citations for design and building confirming their ongoing commitment to produce great houses.



24 May Street East Fremantle WA 6158

P 9438 3288

F 9438 3299

kensingtondesign.com.au

kd@kensingtondesign.com.au



DESIGN & CONSTRUCT
RESIDENTIAL

The Choice is Yours

Eight years ago the now directors of Design & Construct could see that there was a new trend developing for the middle to upper range of new home clients.

Gone were the days where people settled for "off the shelf display home" even with those homes heavily modified they still did not satisfy client's every requirement.

The old idea of one size-fits-all was fast disappearing.

Recognising this fact Tom Brownbill identified a niche in the market place and formed Design & Construct which with his wealth of experience of 30 years in the building industry catered for a more sophisticated client wanting to celebrate their Individuality.

People required homes to live in that expressed who they were, their personality, interests and chosen lifestyle. They wanted easy homes that allowed their families to flourish. They wanted the best in design, materials, and craftsmanship. And some wanted their existing homes to take their place in today's world with a more contemporary look.

The result of Tom's foresight are beautifully proportioned luxury houses built by Design & Construct Residential that become gracious and lasting landmarks in their streets.









Step inside this sophisticated welcoming home and the delightful symmetry continues. There are clean angular lines and a seamless interaction between all living spaces. Natural stone and easy-to-maintain high-gloss porcelain blends with soft warm-toned timbers. Sunlight is captured with floor to ceiling glass and draws the eye to the outside view. Nothing dominates.

An expertly designed and engineered glass elevator fits into the home, both useful and continuing the theme of light and accessibility.

Everything is impeccable from the tiered ceilings that add a sense of spaciousness and interest to the fine crafted joinery throughout the home. Feature lights are carefully chosen to combine

elegance with efficiency and are the centrepiece of the living room. Recesses with subtle accent lighting provide spaces for treasured art objects. The inbuilt fireplace sits waiting. There is a feeling of concord and harmony throughout.

The highly efficient and stylish kitchen gleams with superior fixtures and finishes as well as providing an inviting casual approach.

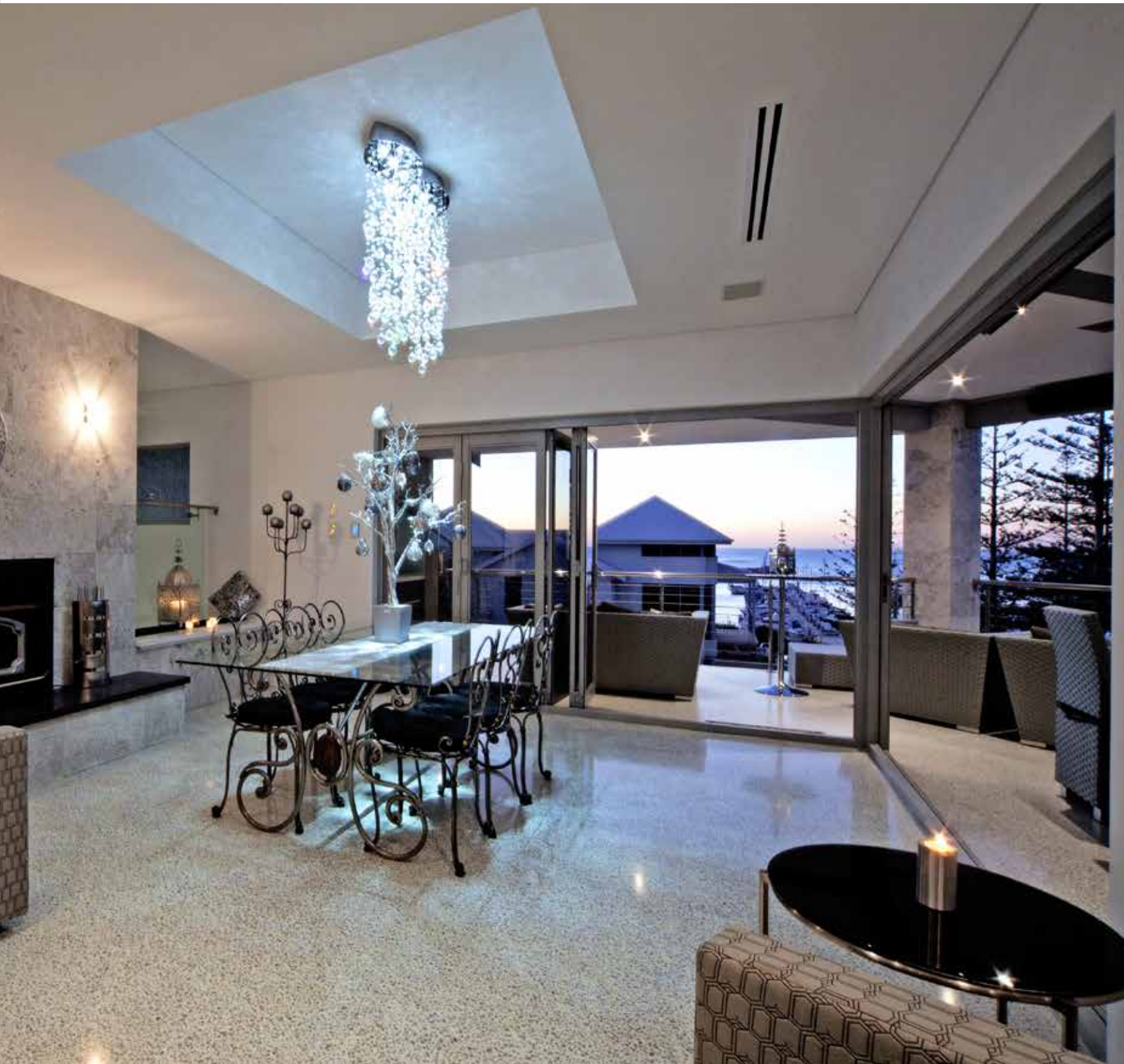
Cleverly designed and free-flowing upper floors in which to live and entertain has become the signature of Design & Construct Residential. A difficult block or a narrow lot only inspires the designers to become more innovative. They enjoy the challenge.



Design & Construct Residential is also proud of its unique three-step process, Design - Tender - Construct that builds in communication, co-operation and transparency throughout the project from start to finish.

Clients are invited to bring their ideas, plans, and most importantly, their wish list to the first cost-free meeting. The award-winning head designer devotes as much time as is necessary to talk this ideal house through. 3D concept drawings are used, every detail is attended to. Fittings and colour schemes are considered. Future needs are talked about. Only when everyone is satisfied are plans sent for approval and the best match sought between builder and client in an open tender process.







These houses are crafted and built especially for discerning home-lovers who have dreams they want to make real. These people want to be involved from beginning to end. They want to make a personal statement about who they are and what they care about in the architecture, design and interiors of their homes.



Suite 9 / 24 Walters Drive
Herdsman Business Park WA 6017

P 9244 2883

F 9244 4400

design-construct.com.au

tom@design-construct.com.au



An Investment in Quality

Quality & Distinction

For 25 years, Atrium Homes have been designing and building luxury homes of distinction.

With every new home constructed by Atrium, comes a commitment to building excellence, a standard that is achieved with the use of quality materials, exceptional attention to detail and pride in workmanship.

Atrium Homes' principles of uncompromising quality are at the heart of the business philosophy. An ethos which has ensured Atrium's enduring reputation over the past two and a half decades as one of WA's premier luxury home builders and seen them consistently recognised with leading building industry awards, most recently the 2013 MBA Display Home of the year.

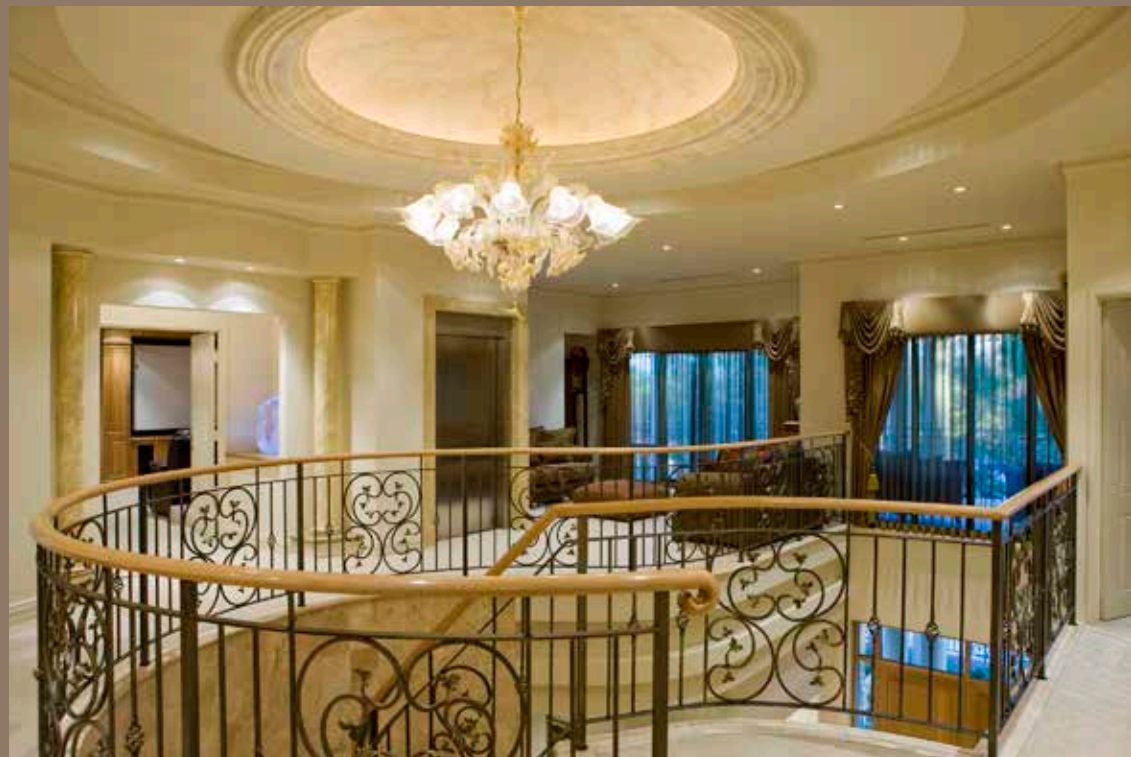






Atrium Homes are renowned for creating unique and personalised prestige homes for WA families.

In creating your dream home it's imperative to have a clear understanding about your expectations. Atrium's in-house Design Studio take the time to fully understand the function and features that you are seeking in your new home, ensuring your new home is designed to suit the way you live... perfectly.





Atrium's transparent building process also aims to ensure clients feel comfortable sharing their thoughts at every stage of the building process. Whether discussing plans or deciding on finishes their experienced team are there to both guide you and listen.





In order to maintain an exceptional standard with each and every home built, Atrium ensure that all the building components, hardware and materials used in the construction of their homes are obtained from only respected, quality manufacturers and suppliers.

Their hands on approach throughout the building process and strong attention to detail guarantees the quality of workmanship and a finish that has won them numerous awards



MBA Award winning best display home of the year 2013

Demonstrating that a narrow block is no obstacle in creating a luxury, sophisticated home, Atrium's new display home - "Blue Gum" defies small lot living.

Located in Molyeen Rd, Mt Pleasant, this superb home on only a 10m frontage demonstrates superb volume, light and space thanks to clever design, high ceilings, well-placed windows and perfectly proportioned rooms.

The sparkling granite kitchen, integrated alfresco area, and a luxurious master suite with walk in robe and balcony demonstrate luxury living without compromise.



An Investment in Quality

Ste 1/88 Catalano Circuit
Canning Vale WA 6155

P 08 9455 7888
F 08 9455 7588

www.atrium-homes.com.au
sales@atrium-homes.com.au



ZORZI
BUILDERS



GRANDWOOD
BY ZORZI

History

Since 1956, the name Zorzi has become synonymous with high quality, craftsman built homes Australia wide. Zorzi Builders was founded on an ethos of hard work, and inspired by a family passion and the never ending pursuit of excellence in delivering the highest quality design and construction of new homes.

Dating back over four generations, the Zorzi passion started when Corado Zorzi first saw the work of Andrea Palladio, while working in the family business in Italy in the early 1900's. Born in 1576, many consider Andrea Palladio to be the grandfather of residential Architecture, having created such iconic residences as the Villa Valmarana ai Nani near Vicenza, in 1670.

Quality, craftsmanship and design have always been the signature of Zorzi. From humble beginnings, providing house and land packages, to the exclusive, custom designed homes of today which have become the benchmark in residential quality construction.

Since their inception, Zorzi has always strived to lead the market with innovative, unique solutions. This pioneering spirit is underpinned by the timeless values of quality and craftsmanship, which are at the heart of every Zorzi home.

Elegant grandeur can only be achieved through considered design and the melding of quality materials with the highest standards of workmanship. Zorzi homes are distinguished by their contemporary designs and an attention to detail evident in every aspect of the home – from the concrete and brickwork through to the fixtures, fittings and finishes.

Grandwood by Zorzi

As the Zorzi brand grew so too did the value of the projects it undertook. With a growing brand and affluent clientele the importance of evolving into a multi-faceted building company was recognised. Grandwood by Zorzi was established in 1994 as a response to expanding client families looking to build at all different levels of style and budget, changing community tastes, trends and styles.

Grandwood quickly demonstrated the value of the Zorzi heritage by winning the HIA Golden Key for best display home in Perth with their first display home, and then the National award for building the best home in Australia, a few years later. This is an accolade many builders do not achieve in a lifetime, let alone the first years of operation.

Grandwood by Zorzi has been built on a reputation for producing outstanding homes that encapsulate the essence of individuality and style. Underpinned by the Zorzi master brand, Grandwood epitomises the Zorzi values in quality and craftsmanship, leveraging this to deliver a range of homes that are accessible across a broader range of price points by streamlining the process down to a seamless art form.

Grandwood Homes provides clients with flexible custom and customised solutions to suit individual needs, unique sites and a personalised service at every stage of the building process. This includes direct access to directors and a full time builder on site as well as a dedicated project manager, and interior design consultants.

Today Zorzi is a multigenerational builder focused on the design and construction of luxury family homes.

The Zorzi brand encompasses:

1. Zorzi, Estate Homes – Specialising in bespoke projects generally in excess of \$2.5 million to over \$20.0 million
2. Grandwood by Zorzi, Custom - Specialising in custom design and built homes generally between \$1.0 million and \$2.5million
3. Grandwood by Zorzi, Aspire - Specialising in a customisable selection of homes ranging from \$500,000 - \$1.0 million





Australian Home Builder of the Year

Zorzi Builders have been at the forefront of the home building industry for nearly 60 years. Over this time, Zorzi Builders have been recognised for their work as home builders of the highest quality, winning numerous national industry awards for construction excellence.

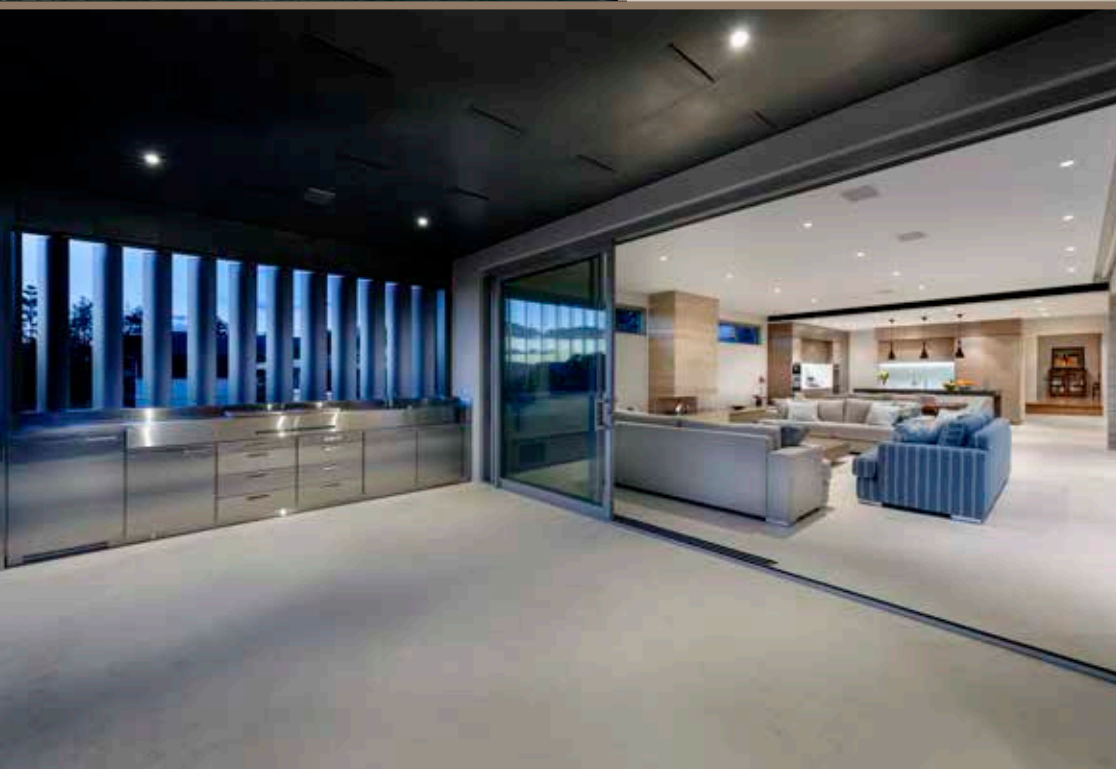


Coastal Modernism

Working hand in hand with an external architect, this Cottesloe home represents a new era in luxury home design.

The architect was able to successfully harness the vision of the client which was brought to life by Zorzi Builders. With nearly 60 years experience, constructing some of Western Australia's most pre-eminent homes, the superior level of construction that Zorzi is renowned for is clearly evident throughout this modern open-plan home.





Throughout the home, the architect and builder worked as one, selecting and presenting products to the client that were both sympathetic to the environment, as well as to the home's aesthetic appeal.

The zinc cladding to the external walls and fascia helped give the home an industrial appeal. At the same time, the polished, 316 marine grade custom balustrade - with high tensile frameless glass - gives the home a certain softness and elegance.

A centrepiece of the home is the lap pool, lined in Italian mosaics that wrap over an infinity waterfall edge at one end.

While this architecture has been described as minimal, there is nothing simple about the level of detail in this modern, coastal resort style home.

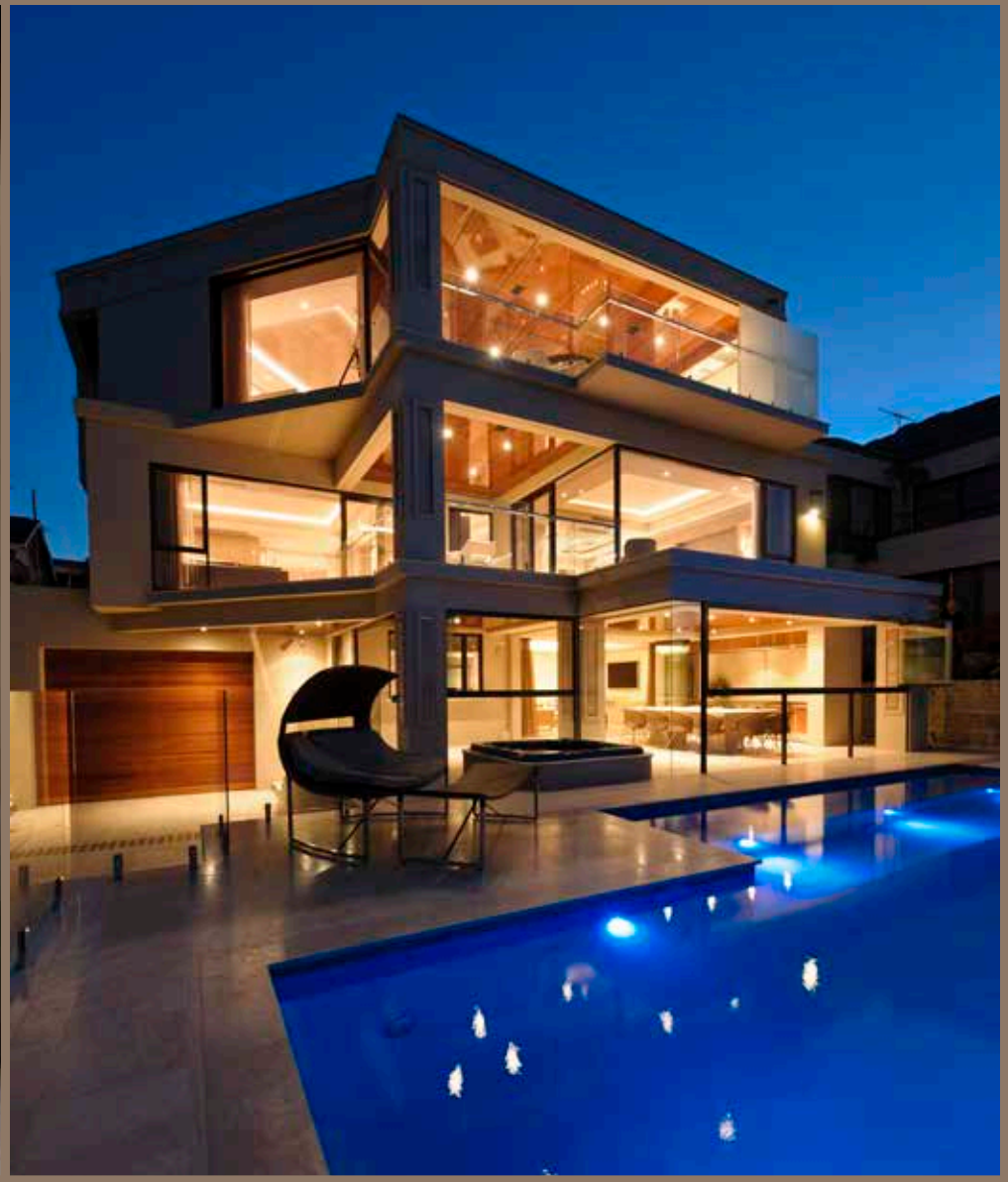


Riverfront Dream

After a lifetime of planning, this family's dream home, was finally brought to fruition in spectacular style by Zorzi Builders.

With the entry being some 16m above the boat-house below, this beautiful home has been built over four levels, accessible by a 12 person lift. The stunning city views afforded by its prime riverfront location, were harnessed in all aspects of the home via an open plan design and floor to ceiling windows. The quality finish and exceptional attention to detail is clearly evident throughout the home, and is a testament to the luxury and quality that has become synonymous with the Zorzi name.





From the moment you walk through the front doors it is clear this home is nothing short of opulent.

Utilising classic materials such as timber and stone in a modern application, Zorzi was diligent in listening to the client, to ensure they selected the best designer and interior designer to suit this client and project.

Walking through the home is a sensory journey. From the heated stone floors and the blend of satin and gloss timber finishes on the walls and ceilings, through to the leather and cotton clad feature panels in the various rooms.

Although the use of different materials is vast, they all blend to create a tapestry for the senses that just works.





Resort Style Renovation

A 23 year old Halls Head home receives a luxury renovation from Zorzi Builders.

Positioned on the canals at Halls Head, this family home was transformed into a stunning resort style estate that takes full advantage of its prime waterfront location.

With large floor to ceiling windows throughout, the internal living areas of the home are seamlessly connected to the extensive outdoor entertaining area. The master suite and bedrooms on the upper level can also be accessed from the outdoor area by separate staircases.

A split roof cabana houses built in cabinetry, barbeque and a wood fired pizza oven, along with glazed doors that provide protection from the weather, ensuring the area can be utilised at any time of the year.

Lush tropical gardens surround the stunning infinity edge pool that sits overlooking the canal and the newly constructed jetty.



The inside of the home has a rustic feel which is achieved with a mix of natural materials including acid-washed and wire brushed granite, stained American oak, stacked slate and polished plaster.

Large timber support beams salvaged from the original jetty have been used as a feature in the newly constructed temperature-controlled, underground wine cellar. The natural granite, solid timber wine racks and iron balustrading enhance the classic European feel.

From the moment you walk through the solid timber entry doors and are presented with the floor to ceiling windows, detailed ceiling and feature fire place of the entrance lobby, it's immediately apparent that you've just entered a truly exceptional home.

The open plan living spaces are enhanced by marble floor tiles throughout. The granite feature walls and timber add warmth and an understated elegance to the home, while not detracting from the stunning exterior views of the garden and canal.

True resort-style living.





Family Haven

This beautiful home in Shenton Park is the fourth home built by the Zorzi Group for this family.

Delivering traditional design elements, with a twist of contemporary flair, the family friendly layout features a children's wing, separate guest accommodation, and an open plan living area with bi-fold doors that lead to an impressive outdoor entertaining area.





Modern Classic

An unusual block with a 2m drop in the centre was no obstacle for the Zorzi design team in creating this Nedlands home that is full of warmth and character.

The owners were looking for a classic feel with a design ideal influenced by the style of American architect Frank Lloyd Wright. The Zorzi Design team addressed this with extensive use of natural elements such as stone and wood applied in a modern, sophisticated way in an open plan design.

Constructed by Grandwood by Zorzi, the attention to detail can be seen in the quality finish that is evident in every aspect of the home, from the under stair lighting to the built in solid timber cabinetry and shelving.

The skilful construction of the staircase leading to the upper level of the home, with solid timber treads suspended out of a granite clad wall, create an impressive feature at the entry of the home.





Complimenting the stylish front façade, the garden area at the front of the home features custom built stone and concrete planters.

The rear alfresco, which is accessed from the central open plan living area of the home also includes some unique design aspects such as a custom made barbeque structure and timber clad ceiling.

The alfresco looks out over the sparkling pool, as do several other rooms of the home including the office which incorporates a floor to ceiling window which cantilevers out over the pool.

The classic features combined with the modern design strategies seen throughout this home make it a stylish and functional family home.





The Marina

This stunning home from the Grandwood Aspire range, was awarded the HIA WA Golden Key Award for Display Home of the Year 2013.

The Aspire range offers design solutions for families who are interested in a luxury custom built home and are seeking reference points and ideas to enable the Zorzi design team to create their individual home.

Built on a 300 sqm narrow lot, The Marina is a modern classic stylised home, perfectly suited to beachside living.





Sophisticated design elements such as timber clad columns at the entry enable an open plan design yet with clear separation of living spaces.

Ponds along the side of the home provide a water feature that is visible from both the interior and alfresco area.

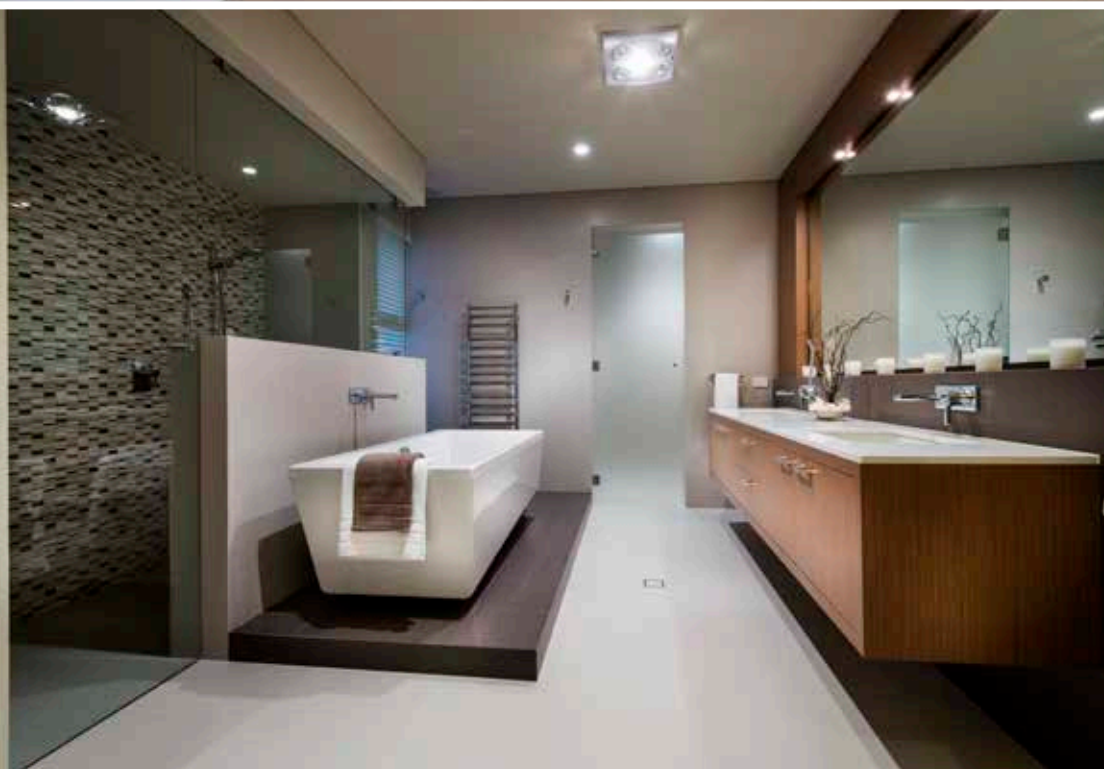
Upstairs the two children's bedrooms are separated from the spectacular hotel-style master suite - complete with ocean views a walk in robe and an enviable en-suite.

Display Location:

48 Pantheon Avenue, Port Coogee,
Open 2-5pm Wed, Sat, Sun or by Appointment







The Green

For those who in the past may have considered a Zorzi home inaccessible to them, the new Grandwood Aspire range of homes offers young families an aspirational starting point to their first luxury custom built home.

'The Green' display home in Churchlands showcases a design which takes full advantage of corner block sites. The home features 4 bedrooms plus study, 2 bathrooms and a powder room along with 3 internal living areas. The open plan design provides a seamless transition between indoor & outdoor living areas and the state of the art kitchen, which comes complete with a butlers kitchen.



The awards won by Zorzi Builders and Grandwood by Zorzi, recognize the level of detail required and the finishes achieved by the many artisans needed to complete a Zorzi home. In many cases, several specialist trades will collaborate on a particular piece of the design, strategy and sequence of work flow, in order to achieve just one of the fine details which can be found in Zorzi homes.

- 1998 MBA Australian Residential Builder of the Year
- 2004 MBA Australian home of the Year
- 2008 HIA Australian home of the year award
- 2009 HIA Australian Outdoor project of the year award
- 2011 HIA National Display home of the year award

Grandwood by Zorzi's most recent success came at this year's HIA WA Awards. The Marina by Grandwood Homes has won the HIA WA Golden Key Award for Display Home of the Year 2013. Grandwood has been the recipient of this most prestigious award on 2 previous occasions, being in 1996 and 2002.

In addition, Grandwood is also celebrating winning the award for HIA Speculative Home of the Year 2013.



GRANDWOOD
BY ZORZI

grandwood.com.au
P +61 8 9380 9811
newhome@grandwood.com.au



ZORZI
BUILDERS

zorzi.com.au
P +61 8 9382 4880
newhome@zorzi.com.au

Absolute style
Absolute beauty
Absolute safety



CALL US FOR A FREE QUOTE ON 08 9302 1947 OR VISIT OUR SHOWROOM:
73 INSPIRATION DRIVE, WANGARA, WESTERN AUSTRALIA

WWW.ABSAUS.COM.AU



**Absolute
Balustrades**

· BALUSTRADING · POOL FENCING · FENCING & GATES · SHUTTERS · AWNINGS · PRIVACY SCREENS

Dream Location for Dream Homes



Artist impression courtesy of Giorgi Exclusive Homes



If you're considering building your dream home, chances are you've been dreaming away for a while now.

You can visualise the chef's kitchen - with the enormous walk in pantry, the alfresco area where you'll be wining and dining friends throughout the summer, oh and of course the fabulous master suite with that dressing room, the one that would make the likes of Sarah Jessica Parker envious. It's possible though that the exact location of that stunning dream home is still a little unclear? If that's the case and you're still researching land options then there's one Perth location that should be at the top of your to view list.

PORT COOGEE

Just a few minutes south of Fremantle, this exclusive coastal neighbourhood offers one of the most unique opportunities to enjoy a waterfront lifestyle within the Perth metropolitan area.

Spanning more than 85 hectares and overlooking the stunning waters of Cockburn Sound, this \$2 billion residential project has won multiple awards including the 2012 National Awards for Environmental Excellence and Best Residential Development; 2013 Western Australia Award for Urban Water Excellence; and Winner of the Property Council of Australia Innovation & Excellence Awards 2013 for Best Master Planned Community.

Given the awards, it's no surprise that the demand for this waterfront property literally reached record highs. When 28 blocks on the Peninsula were first released in 2007 the auction yielded \$78million for developer Australand - believed to be the highest value ever achieved for a single project auction in Australia.

Attended by AFL footballers, local high flyers and international investors the 800 strong bidders, demonstrated the demand for this exclusive coastal neighbourhood. The most coveted block was a 509 sqm block on the corner of the Peninsula which offered panoramic ocean and island views and achieved an impressive sale price, just shy of \$4million.

At the heart of the design for the Port Coogee waterfront estate was the desire to develop a community that would offer a lifestyle in itself.

This luxurious neighbourhood incorporates parkland, family friendly beaches and continues the bike path that runs along the coast and extends to Woodman Point. This exclusive coastal estate will also one day bring together café's restaurants, shops, and a waterside amphitheatre.

Although the initial Peninsula lots were quickly snapped up, good news for those still interested in exclusive waterfront property is that lots are available on Seaspray Island.

Seaspray Island has been likened to the world-famous and award winning One°15 Marina Club in Singapore, one of Asia's finest marina clubs and it offers discriminating buyers an exclusive opportunity to be a part of this stunning coastal

community via a striking 24 metre bridge. Lots on Seaspray Island are currently available from \$1.775 million and include their own private boat mooring.



One°15 Marina Club in Singapore

Like your coffee with a view? The new Dome Café overlooking stunning Cockburn Sound at Port Coogee



Artist impression



If you're a boat lover, a sea lover or just want to retire to a coastal community that offers it all - Port Coogee has now been established at the forefront of waterfront developments, all in the heart of the Perth metropolitan region.

Whilst you're there, make sure you check out the stunning new award winning display home built by Grandwood by Zorzi - located at 48 Pantheon Ave, Port Coogee (sneak peak pg's 128-129)

PIRONE

BUILDERS

A REPUTATION BUILT ON QUALITY



PRESTIGE COMMERCIAL BUILDERS



Suite 1, Level 1, 8 Commerce Street Malaga, WA 6090 p. (+61 8) 9248 6399 m. 0417 919 715 f. (+61 8) 9248 5189
e. adrian@pironebuilders.com w. pironebuilders.com.au



image courtesy of Zorzi South

A photograph of a modern house at dusk. The house is on the left, with large windows and a balcony. The lawn is green and well-maintained. There are several trees, including a large one in the center and a row of smaller ones in the background. The sky is dark blue with some clouds. The overall mood is serene and luxurious.

South West Custom Builder Features

Stunning homes from some of the South West's most prestigious luxury home builders.

Sleep yourself healthier

Toxin Free Mattress with Stretch Effect

The bedroom is the most important room to keep free of health burdens and sources of irritation for the body because this is where we rest and regenerate. In the quest to create the healthiest sleeping environment, the Austrian Academy of Naturopath and Radiation Protection quickly realised mattresses were a big problem. 600 Different types were tested and all failed to meet the Academies criteria. So... we made our own.



Designed by Naturopaths and Orthopaedic surgeons, these mattresses address health concerns the mass produced mattress manufacturers ignore or are often totally ignorant to.

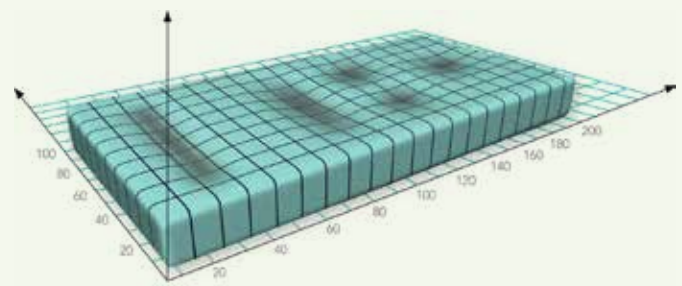
Our mattresses are very different:

- Stretch Effect: Downward pressure is converted in a gentle traction reducing pressure in the spine to aid regeneration.
- Metal Free: Metal attracts radiation from transmitters and propagates electric field radiation from internal wiring.
- Latex Free: Far beyond Allergy testing, is intolerance testing. We found Latex to be the worst and causes intolerance reactions in most people.
- Toxin Free: Instead of using chemical propellants in the production as other manufacturers do, we use toxin free processes.
- Anti-Static: Most mattresses build up a static charge which is not good for you.

- Anti-Fungal and Anti-Ageing: Due to the high air permeability of its design, fungi are repelled and great oxygenation is brought to the skin.
- Removable and Washable outer cover: Renew your mattress whenever you feel like it.

Also optionally available with total customisation to your body size and shape.

Contact us and order yours today.



PHYSIOLOGA[®]

Physiologa

Australia 03 9005 5020

New Zealand 09 887 0615

www.physiologa.com.au



ZORZI
— SOUTH —



Contemporary Beach Chic

The epitome of a sophisticated yet relaxed and casual modern Australian beach house, this home mixes urban chic with coastal cool. The high quality finish and clever combination of architectural elements is a testament to the skill of award winning builders, Zorzi South.



Set high on top of the sand dunes overlooking the beach at Eagle Bay, the location of this landmark home was inspirational in its design. The organic warmth of natural timbers contrasts perfectly with the more industrial feel of a polished concrete feature wall on the staircase and the matching polished plaster of the fireplace.

The home has an understated elegance, although comes complete with every convenience one could ask for, including a customised lift and a cool room.



While the entire exterior is vertically clad in Pacific teak, the interior of the home features recycled tallow wood floorboards, painted white cedar-lined ceilings and walls and solid cedar feature cabinets.

Natural light flows effortlessly into the huge open plan living and dining space, thanks to massive double-glazed sliding stacker doors, which blur the lines between indoors and out, and allow fresh sea breezes to float gently into the home.





The crisp white-lacquered entertainer's kitchen showcases a clean, streamlined aesthetic with a vast range of storage options, from the banks of wide drawers to the wall of overhead cabinets and the butler's pantry, keeping clutter to a minimum. Appliances include an Ilve stove, integrated dishwasher and microwave plus the all-important cool room. A smooth glacier white Corian benchtop features on the large central island bench.

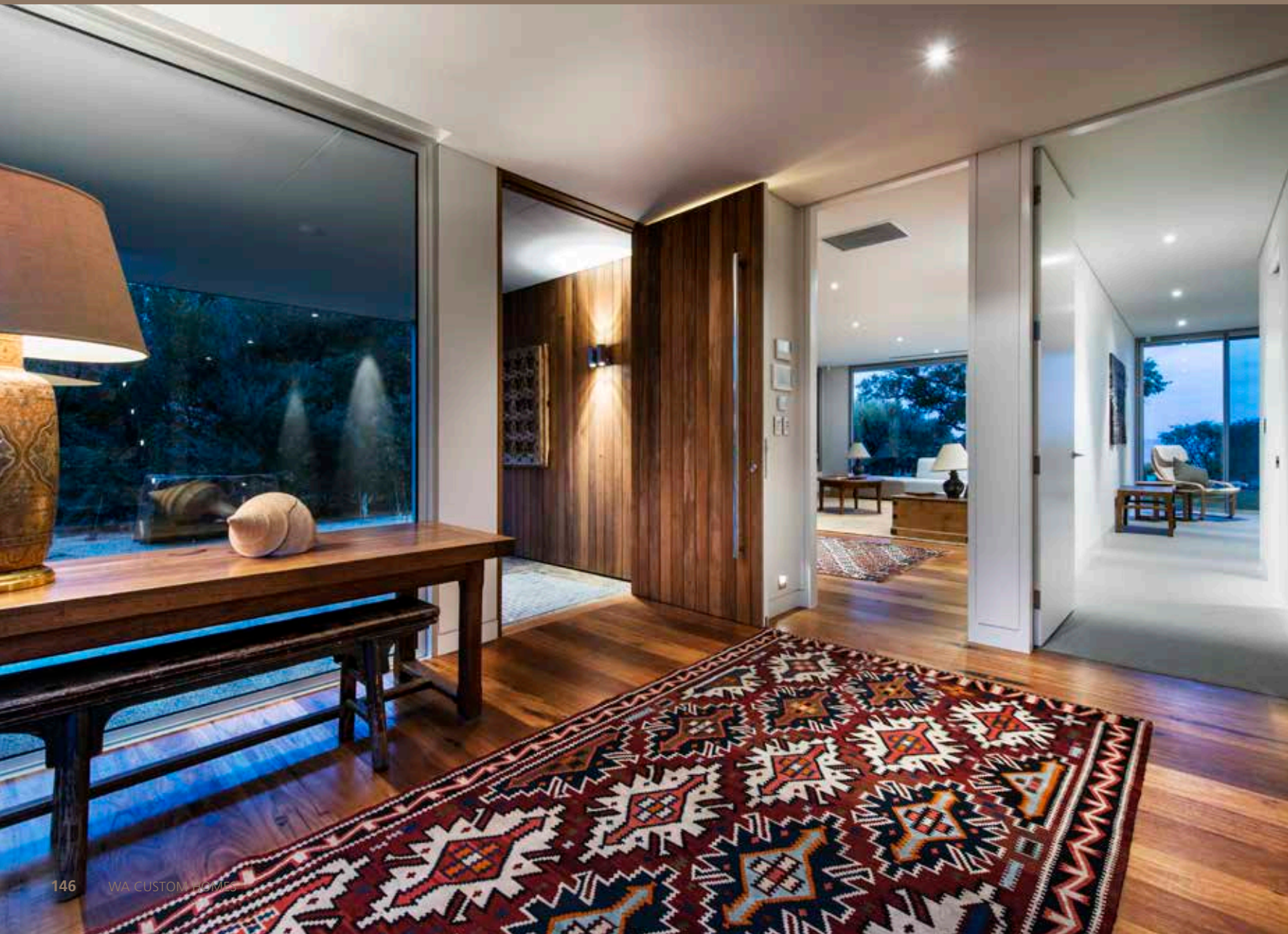
Wide hallways, together with the clever use of glass and carefully positioned lighting, enhance the sense of space throughout the home.

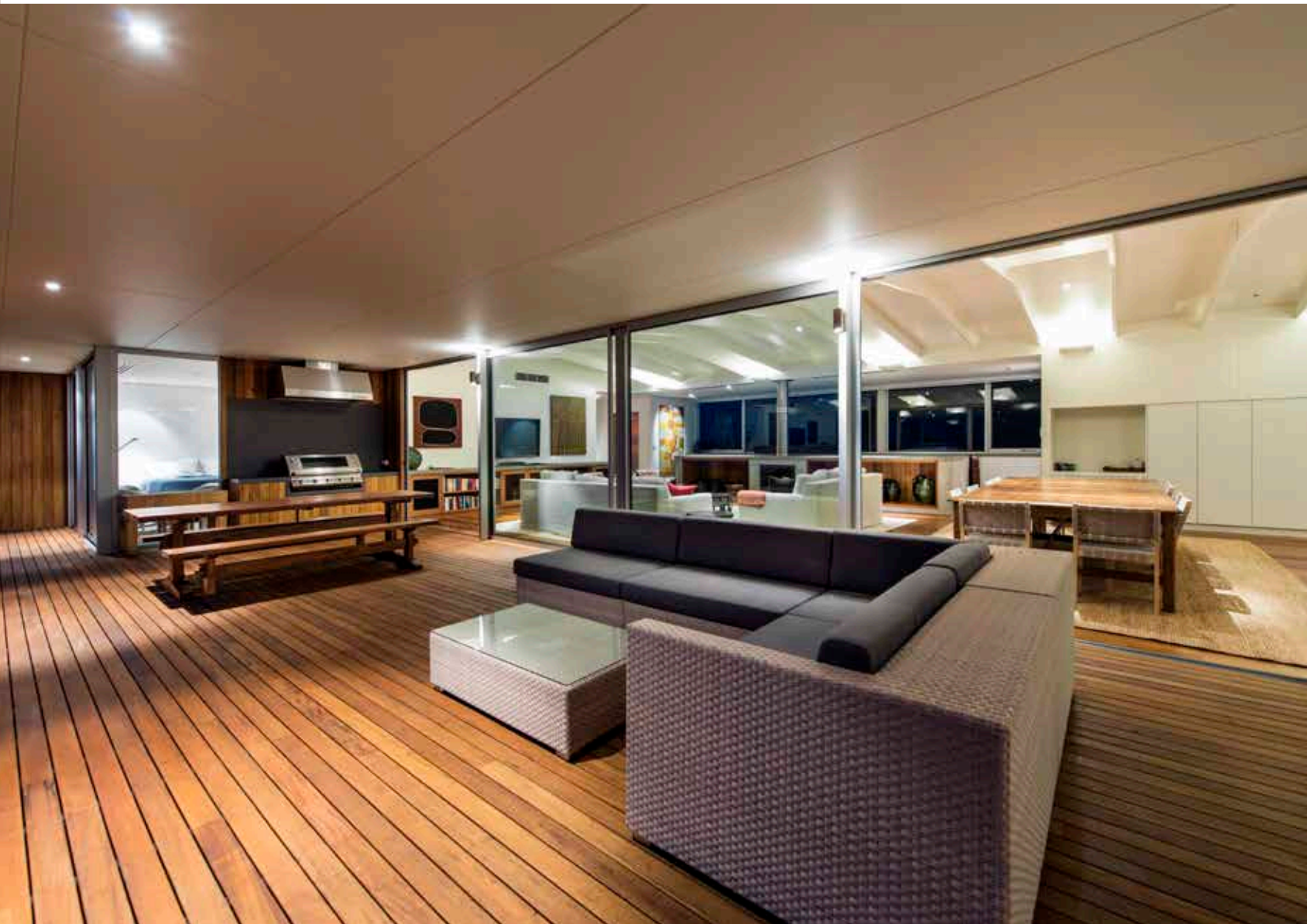




The master bedroom offers a dressing room plus a spacious and inviting open ensuite with Fontainebleau stone benchtops and floors, plus a sleek cedar wall-hung double vanity.

The teak motif is continued on the huge covered balcony, which is ideal for alfresco entertaining on a grand scale. Whether dining or lounging, point blank views of the pristine beach, wide blue ocean and rugged coastline provide the perfect backdrop.

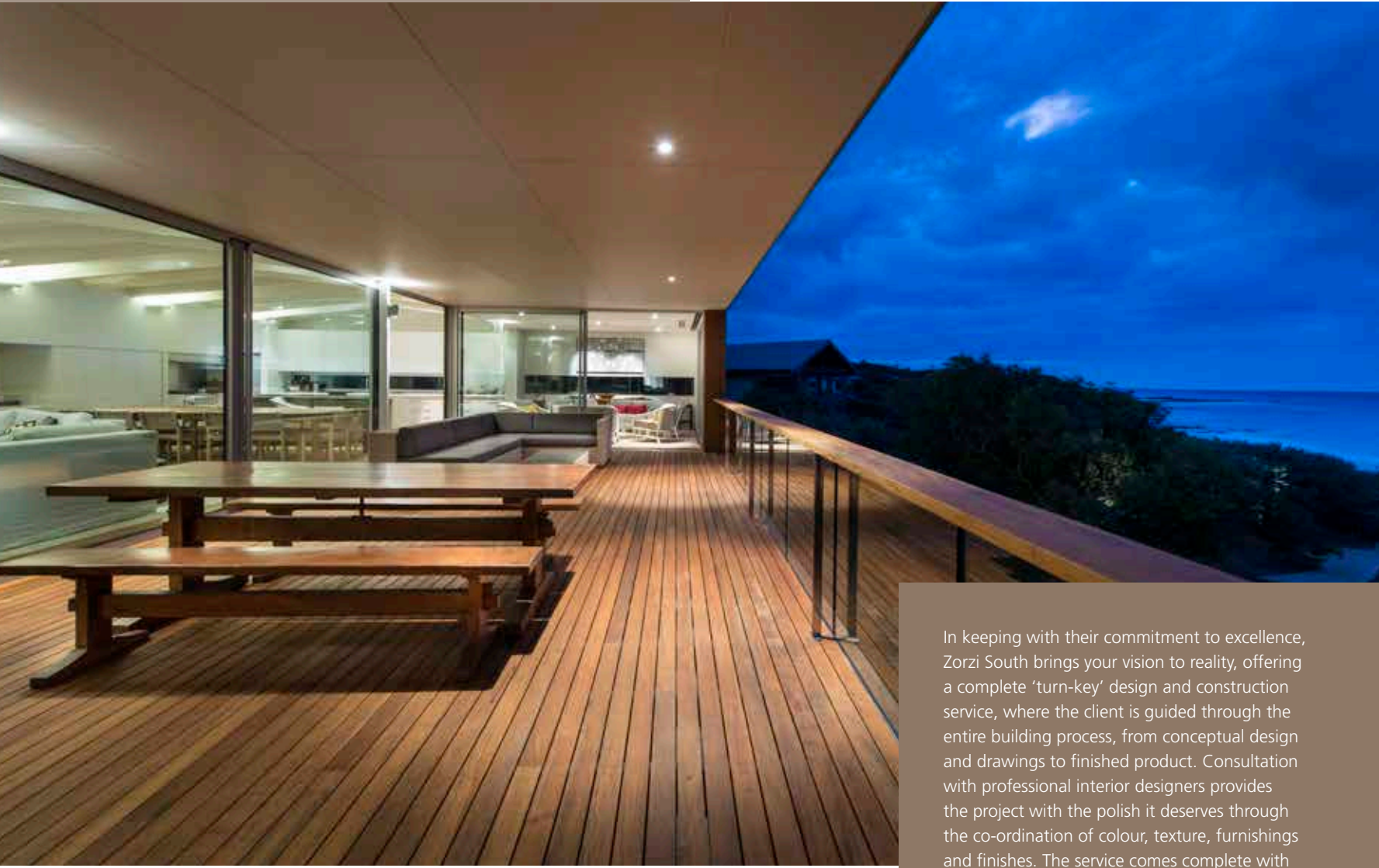




This latest addition to the impressive Zorzi South portfolio reinforces the company's reputation for building homes to the highest levels of craftsmanship.

Since its inception in 2006, Zorzi South has grown to become one of region's most sought-after residential and commercial builders. They have established a solid reputation for excellent workmanship and top quality standards in design and construction.





In keeping with their commitment to excellence, Zorzi South brings your vision to reality, offering a complete 'turn-key' design and construction service, where the client is guided through the entire building process, from conceptual design and drawings to finished product. Consultation with professional interior designers provides the project with the polish it deserves through the co-ordination of colour, texture, furnishings and finishes. The service comes complete with assistance to move in and install the finishing touches upon hand over of the new residence or place of business.



ZORZI
— SOUTH —

Suite 13, Bay View Centro
27 Dunn Bay Rd
Dunsborough, WA 6281

P 9756 7669

F 9756 7687

zorzisouth.com.au

adrianz@zorzisouth.com.au

TALLWOOD
CONSTRUCTIONS

Five-star sanctuary

Set over two prized beachfront blocks of land in Busselton, it's hard to believe this stunning landmark residence was previously a 1980's plain brick bungalow.

This luxury Tallwood home cleverly combines the highest quality construction and finishes with a relaxed and stylish ambience.







The brief given to Tallwood Constructions by their client was to keep the basic structure of the home but “bring it kicking and screaming into the 21st century,” and this goal has certainly been achieved.

The striking façade of this Mediterranean-inspired home features extensive use of Yallingup limestone cap rock cladding, which is contrasted with the grey Modwood decking and Ocean Blue cross-cut travertine floor tiles.



The home's new design showcases the smooth integration of indoor and outdoor living. There's no doubt the focus is firmly on those spectacular ocean views. Opening up the wide bi-fold doors which run across the front of the home brings the feeling of being right on the beach, looking straight out into

the vast Indian Ocean. The spacious ground floor living and dining areas are open plan with the option to segregate each space, thanks to a bank of glass concertina doors. This is especially handy during the winter months, when the stone-clad corner fireplace brings warmth to this area.



Each of the five large bedrooms have their own ensuite bathroom, with the master suite located on the first floor featuring floor-to-ceiling windows and commanding views across Geographe Bay, back to Dunsborough.

On the first floor, the home offers an additional living area with built-in study nook, a small second kitchen and large alfresco entertaining area, with ocean views of course, creating the option of a completely self-contained space.

The contemporary main kitchen is predominantly white gloss with walnut American black veneer feature cabinets, creating optimal storage space, plus quality integrated Siemens appliances including a floating stainless steel range hood above the central island bench.





Cedar linings have been used for external and internal ceilings to add warmth and complement the palette perfectly. While the fittings are top quality and luxurious, beautiful timber flooring and white shutters also feature throughout the home, enhancing the relaxed beach house atmosphere.

At the rear of the home, an outdoor beach shower is set within a stone feature grotto, providing a charming feature with a Mediterranean feel as well as a practical use. This area also offers a stone cascade water feature which is contrasted by Kimberley Stone and exposed aggregate paving.



Since 1998, under the leadership of Managing Director Alex Campbell, Tallwood Constructions has developed a strong reputation for quality constructions and design solutions in South-West WA and more recently in metro Perth and surrounds. It is Alex's philosophy that the successful 'bringing to life' of a client's dream home lies within one-to-one personalised service, a high level of supervision and fastidious quality control through all stages.

The results speak for themselves, with the company winning 21 HIA building awards since 2009.

TALLWOOD CONSTRUCTIONS

Bunbury Unit 2, 27 Bonnefoi Boulevard

Perth Unit 3, 3 Pamment Street, North Fremantle

P 9791 7776

F 9791 7889

www.tallwood.com.au

alex.c@tallwood.com.au



QUAINE CONSTRUCTIONS PTY
LTD

European Beauty

The 1000 square metre multi-level home in Eagle Bay stands out from its neighbours with its unusual form and the strong European influence in its design. Yet this house is still Australian with its clever understated elegance both within and without, and its excellent, well-thought out placement on a sloping block that offers breathtaking views of natural bushland, and the sparkling bay.







Huge local granite boulders, natural stone steps and magnificent stonework are incorporated throughout in the splendid design creating a sense of grandeur, and acknowledging our ancient land.

This unparalleled home has a guest suite with its own alfresco area for enjoyment or entertaining, and a master suite with both indoor and outdoor bathrooms. There are a total of five bathrooms and two more double bedrooms.

Superb living spaces and outdoor areas, with plenty of room to live and entertain, make this exciting residence one of unsurpassed luxury and sophisticated living.





Quaine Construction – is at the forefront of building highly distinctive, quality custom homes in both the Perth metropolitan and South West region.



QUAINE CONSTRUCTIONS PTY LTD

Reg 13123



South West Office

PO Box 922, Dunsborough 6281

Mobiles

Drew 0413 440 500

Belinda 0420 744 680

quaine.com.au

belinda@quaine.com.au

Building a Happy, Healthy Home



Health is one of the quality of life factors that are measured regularly in the Happiness Index, and part of the definition is a balance between mind and body and between people and the environment.

We know sleep, exercise and eating well are important, but what we often haven't paid enough attention to is the role our environment plays in our own and our family's health.

We cannot always control our external world, but now a growing body of research is focused on what is happening inside our homes, and a major concern is increasing radiation exposure.

Radiation is everywhere of course. Natural sources, including the sun, have been present since the earth was formed. But in the last 200 years, industrial and building technologies have increased the artificial human-produced sources of radiation.

Exposure to radiation, even at only a fraction of the 'safe' limits set by governments have links to cancer, fertility issues, blood pressure problems, leukaemia and lowered immunity, compromising our overall health and well being.

Patrick van der Burght – director of Geovital Academy Australia, a company that advises people on building strategies to minimise radiation in the home says,

“What is becoming much clearer is the role that radiation exposure in our own living and sleeping spaces plays on our health.

After all, if we think about it our home is where we spend most of our time and the bedroom is where we are supposed to rest and regenerate.”

Mr van der Burght says. “Most people would be very surprised to know that inside the wall of their home produces electric field exposure in about 95 per cent of people when we measure their body whilst lying in bed. Power cables along the street, even if underground, can produce low level radiation which can have many negative health effects.”

Mr Van der Burght became interested in this work after a family health scare encouraged him to make lifestyle changes and learn about natural therapies.

His research led him to Germany and to Geovital in Austria, a naturopathic health clinic involved in natural therapies for 30 years. Geovital is now a worldwide authority on radiation protection in the home. Its continuing research confirms co-relations between this constant exposure and ill health, and documents a significant improvement in many clients' health after intervention.

Although Geovital can implement strategies to minimise radiation exposure in existing homes, an optimum time to consider solutions is when a house is being built.

Mr Van der Burght explains Geovital's consultative role in the building process: “What we do is analyse the building plans and identify weaknesses in the design that may expose occupants to unnecessary levels of radiation. The changes we suggest essentially occur behind the scenes and have no visible impact in the home. As an example we may ask the electrician to run the wiring a little differently or install switches which will essentially cut power to an entire circuit when the use of electricity stops. This eliminates radiation that would normally be present in areas like bedrooms when you are sleeping. When, let's say a bedside light, is switched on, power is instantly returned.”

In addition to modifications to the electrical wiring design, other solutions that may be recommended by Geovital include a shielding mesh which is used inside the wall cavity. The mesh minimises the exposure from transmitters such as mobile towers, smart meters, and internal wiring. Alternatively a shielding paint can be used on the wall which can be painted and wallpapered over with similar effect.

They say you can't put a price on health, and yet surprisingly the cost to protect yourself and your family from excessive radiation exposure is relatively minimal in your overall building budget. It is in the bedroom where we all spend eight hours or more a night to rest and regenerate that protection is most important and protection of a single bedroom costs on average around \$3000 - not a lot to pay for that healthy and happy balance between mind, body and the environment.

In an ideal scenario however, the consultation process should start some time prior to the commencement of building, in fact prior to choosing your building site.



“We can help people who have not bought land as yet to measure for radiation exposure on a potential site”, says Mr Van der Burght.

“Unfortunately there is a rare type of radiation that cannot be shielded against and getting us involved early in the process could prevent potential disaster by avoiding the purchase of a site with serious and unfixable problems.”

And as for how the builders and architects view Geovital strategies? “To date no one we have worked with has had a problem implementing these changes. In fact most architects and tradespeople find it fascinating and are interested in learning more on the subject”. Says Van der Burght

We all want to live a happy and healthy life filled with vitality. We also want to enjoy the benefits of modern design and technological development.

Making our homes environmentally safer and free from invisible radiation contributes to this, and lays the foundation for a happy, healthy future.

Geovital has an Australia-wide network of trained professionals who can offer home assessments to detect how much radiation is in your current living environment and if needed recommend solutions.

Geovital also runs workshops and training for builders, architects, and other professionals to educate them about radiation, and available solutions.

Mr Van der Burght is a popular speaker on the subject of radiation exposure and the effects on your health.

Building for the future



mondoexclusive.com.au

39 Herbert Street, Doubleview, WA 6018 • Ph 08 9244 3160



Mondo Exclusive Homes specialise in designing and building new single or double storey luxury homes.

Each new home project is undertaken by Mondo Exclusive Homes with an uncompromising commitment to quality and client satisfaction.

Our desire to innovate, to exceed your expectations and to provide you with the very best service is the

cornerstone of our ongoing success.

We continue to grow our business through referrals from delighted clients, who value our superior craftsmanship, attention to detail and open and clear communication channels.

With a strong focus on sustainable building, we use the very latest in modern building techniques, materials and technology to maximise the energy efficiency of your new home.

To discuss your next building project contact Ray Kershaw on 0421 223 831.



mondo
EXCLUSIVE homes

A Blend of Old & New

The challenge for many people is whether to renovate or build. The owners of this Claremont home decided that additions and alterations were the way to go, and transformed their existing home into a contemporary dwelling that shines as an example of a truly successful renovation.

The challenge for architect Gerard McCann and builders Quaine Constructions, was to maintain the charm and appearance of the heritage-style, which still displayed its gracious past and timeless character whilst updating it with all the modern luxuries and conveniences needed for today's lifestyle.

A major obstacle for Quaine was to retain the front façade because the wall was failing. This necessitated the removal of the northern boundary wall and the concrete underpinning of the existing limestone foundations. All was complicated further by limited site access however in the end this home has been stunningly rejuvenated and restored to its absolute former glory. It is authentic and luxurious in every detail from the restoration and re-use of beautiful feature items such as the historic stained glass windows and the excellent and quality finishes used throughout the house.



 **HIA Awards winner**
Category of Renovation
\$750,000 +





A total of 208 square meters of floor space, including an extra level has been added to the original residence. This includes three bedrooms, a granny flat, and two bathrooms. The transition between the old residence and the new is seamless and such is the design expertise and workmanship that this house is the winner of the HIA Awards \$750,000 + upwards Renovation Project, 2013.



WINNER

\$750,000 + upwards
Renovation Project
HIA Awards 2013

FINALIST

\$350,001 to \$500,000
Renovation Project
HIA Awards 2013

FINALIST

RENOVATIONS/ADDITIONS PROJECT
\$650,000 and over
MBA Awards 2011 South West



QUAINE CONSTRUCTIONS PTY LTD



Reg 13123
Suite 1, 107 Stirling Highway,
North Fremantle WA 6159
P: 08 9335 8891 F: 08 9430 6110
M: 0413 440 500
www.quaine.com.au

Speaking your language, building your dream



—
YOU'RE ONE OF A KIND.
YOUR HOME SHOULD BE TOO.
—

CUSTOM HOMES | CUSTOM DEVELOPMENTS | DEMOLISH & BUILD



**Every home we build is unique.
We design and build to suit you and your lifestyle.**

That's why we limit the number of projects we tackle – to ensure we're able to give you the time, care and attention you deserve. It means we're able to focus intently on you, your aspirations and inspiration, ensuring we maintain the highest quality service and craftsmanship at every stage. No compromises. Just the home you've always dreamed of.

Visit cicirellohomes.com.au
or call **6267 5136** to find out more.

CICIRELLO
HOMES

Did you know a few small changes in the building process can create a **home that supports your health as well as your lifestyle?**



What do you expect from your own 4 walls?

Should your home only be a safe haven against bad weather and burglars? Or should it also protect your health?

Did you know?

The way most homes are built exposes you and your family to radiation from internal wiring and external sources like power cables, phone towers and smart meters.

Did you know?

That solar panels are great for the planet but can be detrimental to your health unless well placed and potentially shielding is put in place.

Did you know?

Some building sites have unfixable radiation exposure that even at 250 times BELOW the government allowable limit has been linked to cancer, leukaemia, low immune systems and fertility issues.

Living healthy is vitally important. People who live healthy fight disease more effectively and replenish their life's energy reserves.

Your Geovital Academy radiation specialist works with you and your architect to uncover the weak points in your new home design which would burden you and your family due to undesirable radiation levels. We then develop a strategy to improve this by implementing materials and small (behind the scenes) design changes that will have a significant impact on the level of exposure to you and your family.



The cost is insignificant in consideration of the value of your new home and is a great investment in your families health.

Safe guarding your well-being is the most important function your new home should have.

Contact us, or one of our consultants near you for further information ideally before a site/land purchase.

Are you an Architect or Builder?



Geovital trains doctors, therapists, architects and builders about living and building radiation free. Join our team and learn to incorporate healthier living into your designs.

Join us on



Consulting across Australia and New Zealand
National Numbers
Australia 03 9020 1330
New Zealand 09 887 0515
www.geovital.com.au www.geovital.co.nz

GEOVITAL
RADIATION FREE LIVING

10

Beautiful Rugs





1. Arcadia - Easton Pearson for Designer Rugs 2. Corfu - Greg Natale for Designer Rugs 3. Garden Party - Catherine Martin for Designer Rugs 4. Rhapsody - Catherine Martin for Designer Rugs 5. Vintage Lace - Georgia Chapman for Designer Rugs 6. Tempera - Christian Lacroix for Designers Guild 7. Kashgar Jade - Designers Guild 8. Cabochon Chalk - Designers Guild 9. Octavia Linen Rug - Designers Guild 10. Paseo Jais - Christian Lacroix for Designers Guild

Designers Guild - available from Heather Levi Interiors, 439 Hay St, Subiaco WA, 9388 2788 www.heatherlevi.com.au
Designer Rugs - WA Office Suite 7, 272 Hay Street, Subiaco WA 6008 Ph: 0421 287 378 www.designerrugs.com.au

solid timber doors

*Make your first
impression last*



windows



stackers



bifolds



pivots



gates

...suppliers of joinery & lining to
HIA WINNER 2013
PERTH HOME OF THE YEAR

...by **GIORGI**
exclusive homes

Cedar West

t 08 9257 9500

e sales@cedarwest.com.au

...ask about our AS2047
compliant joinery

cedarwest.com.au

Pure

Crafted with a unique blend of Alpaca wool.
Using 100% undyed fibre; as nature intended.



CARPET: CAPULET, COLOUR: BLANCO



[velieris.com](https://www.velieris.com)

Velieris



Our 25 years of experience creating stylish and functional wardrobes and home offices and regular repeat business **speaks for itself.**



U7/4 Achievement Way, Wangara
call for an appointment to see our showroom
t. 08 9302 2881 f. 08 9302 4881
e. info@academyhomeoffices.com.au
www.academyhomeoffices.com.au

10 Gorgeous Cushions





2



3



4



5



6



7



8



9



10

1. Newline Cushions - Heather Levi Interiors 2. Chaneti moss - shaded satin embroidered cushion - Heather Levi Interiors 3. Isabella Diamante Cushion - Heather Levi Interiors 4. Kashgar Platinum Cushion - Heather Levi Interiors 5. Paseo Doble Jais by Christian Lacroix - Heather Levi Interiors 6. Miss Muffet Magenta Cushion - Heather Levi Interiors 7. Tokyo Geisha Multicolore - digitally printed cotton cushion - Heather Levi Interiors 8. Royal Collection Verity Emerald Cushion - Heather Levi Interiors 9. Inline cushion - Rockefeller Grape - Heather Levi Interiors 10. Moser Wedgwood cushion - Heather Levi Interiors

Cushions - available from Heather Levi Interiors , 439 Hay St, Subiaco WA, 9388 2788 www.heatherlevi.com.au



For discerning tastes...

Dumet
House of Fine Furniture™



Exclusive Jarrah and Marri furniture, custom built to your requirements.



Finely crafted furniture made in WA.

Jamel House of Fine Furniture is Western Australia's premier designer and manufacturer of timeless Australian made furniture.

Visit our new showroom at 64-68 Achievement Way, Wangara WA 6065
T +61 (08) 9302 33 11 E jamel@jamel.com.au W www.jamel.com.au



... timeless sophistication

Dannel
House of Fine Furniture™



Jamel combines the unsurpassed beauty of wood with exceptional craftsmanship to create quality investment pieces that last a lifetime.



Finely crafted furniture made in WA.

Jamel House of Fine Furniture is Western Australia's premier designer and manufacturer of timeless Australian made furniture.

Visit our new showroom at 64-68 Achievement Way, Wangara WA 6065
T +61 (08) 9302 33 11 E jamel@jamel.com.au W www.jamel.com.au

Where will you find human skulls the size of a room, ferocious oversized bulldogs, furniture covered in reptiles and erotic naked women? Welcome to the world of French sculptor Christian Maas...

Known somewhat for his eccentricities, Christian Maas has been labelled as one of the great contemporary sculptors of the 21st Century. Maas works in a traditional way in both bronze and aluminium to produce pieces that are truly unique. Humorous, bizarre and often erotic his works include animalia, life size 'Bond' girls, and celebrity representations including those of Grace Jones, Michael Jackson and more recently Kate Moss.

Since coming to the world's attention in the 1980s, Maas has won multiple awards and exhibited his symbolic and fantastic sculptures in New York, London, and the Middle East as well as his own galleries in Monaco and St Tropez. Maas has also been commissioned for over 100 public monuments, including de formula 1, a tribute to the Grand Prix found in Monaco.

Given the uniqueness of his work it's no surprise Maas has developed somewhat of a celebrity following, with friends and collectors such as Bridget Bardot and Prince Albert of Monaco.

In Australia, Christian Maas work is available exclusively through Melbourne art dealer, Sculptura based in High Street, Armadale.

According to gallery owner Sean Basset, Maas's profile is also now increasing in Australia. "We have several serious collectors now in both Sydney and Melbourne who love Christian's work and view him as one of the most significant sculpture artists of this time".

A new exhibition is planned for early 2014, additional information can be found at www.christianmaas.com.au





Planet Maaas

Art for a



Enjoy stunning pieces of art with no capital outlay with our art rental options.

Complement a water feature or create a dramatic impact indoors or out, in your luxury home, corporate foyer or lavish development. Whether you're an architect, interior designer, developer, landscape designer or simply have a passion for beautiful objets d'art, you'll appreciate the way our unique pieces can transform a space.

rt's sake



SCULPTURA®

For further details call +(61) 3 9824 5555 or visit our website for national stockists or to view further pieces
www.sculptura.com

Art Space

Ever walked into a room and been awestruck by a stunning piece of art?

An artwork can not only enhance a room as an aesthetic accompaniment to your soft furnishings and furniture but set the mood and act as the central showpiece of a space.

If you're an art lover and the proud owner of an existing art collection, then where and how to display your art in your new home is likely to be something that you will discuss at lengths with your architect, if however you've not previously invested in original art the design phase is an opportune time to consider how you might incorporate art in your new home.

The key to successfully displaying original art, is to achieve a balance of extracting the atmosphere from a unique piece while simultaneously maintaining the space as an area for work, entertainment, or rest. Considering the placement of art in the initial home design phase allows you to determine where art might best be placed, in the same manner you might discuss the ideal position for the lounge or television.

Large bare walls are obvious options for wall art, but there are a myriad of other considerations that can ensure your artwork is optimally displayed rather than it being an afterthought in the decorating process.

Wall recesses provide dedicated areas in which to hang art and lighting can be unobtrusively positioned within the recess to highlight the art.



The textural change in this wall creates a perfect blank canvas for feature art. Image courtesy Zorzi South



The wall that divides this room becomes a floating platform for feature art (Image courtesy of Hedger constructions)



Original art is a dominant feature in the stunning home built by Tallwood Constructions with the use of recessed walls painted stark white to highlight the art and feature lighting.



Recess for sculpture or objets d'art has been cleverly built into storage in this home built by Weststyle

How to collect art for pleasure and value

The good news is that you don't need deep pockets or specialist knowledge to get started.

Several of my clients began their increasingly valuable collections with just one well-informed purchasing decision.

Which is where I come in.

As a professional art advisor, buyer's advocate and recognised valuer, I can guide you into building a collection that's both an asset and a source of enjoyment.

I have been in the art industry for over 15 years, initially as a fine art dealer specialising in the Australian Secondary (auction) Market.

I have personal relationships with leading galleries, auction houses, collectors and artists all over Australia. Accordingly, I can source artworks of interest for you, take you to arts events, and give you access to private viewing and buying opportunities.

I then negotiate prices, provide independent valuations and condition reports, and take care of logistics such as transport, hanging and insurance.

In short, I help you make the right buying decisions at the right time to maximise the value of your art asset.

With Primary (gallery) artworks you won't be charged a fee as I make my money via standard gallery sales commissions. And when I act as an auction advocate a 5% fee on the hammer price only applies upon successful acquisition. Up until that point all of the consultation process is free of charge.

Let's get together to discuss an art-buying strategy that suits your taste and budget.

Paul Auckett

0419 309 321
paul@lookart.net

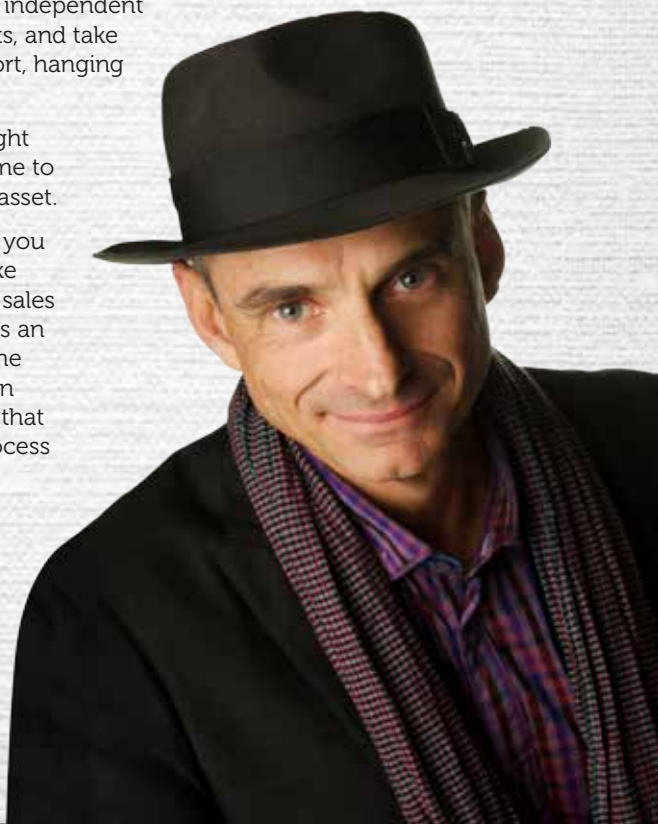


photo courtesy of cherrymdme.com



Offering art advice and
service for over 15 years



Paul Auckett - Look Art Consulting

paulauckett.com
paul@lookart.net
+61 419 309 321





Into the Mystic with David Giles

With 42 solo exhibitions, and dozens of art awards under his belt you'd be excused for expecting David Giles to be one of those stereotypical, somewhat affected 'artiste' types. However, nothing could be further from the truth for this passionate artist & gallery owner, who despite being heralded as one of Australia's most exciting contemporary painters, chooses to give back to the art community that he so loves.

Crediting his twenty year career to a near death drowning experience, the abstract work that has followed has been consistent in its appeal; largely

due to David's ability to create visually entrancing works with a spiritual depth that seem to permeate the ambience of the room.

The unique qualities of David's work are more easily understood when you hear David talk about the experience that came to define his work. In the ABC documentary titled "How Art Changed My Life: David Giles," Giles recalls the event,

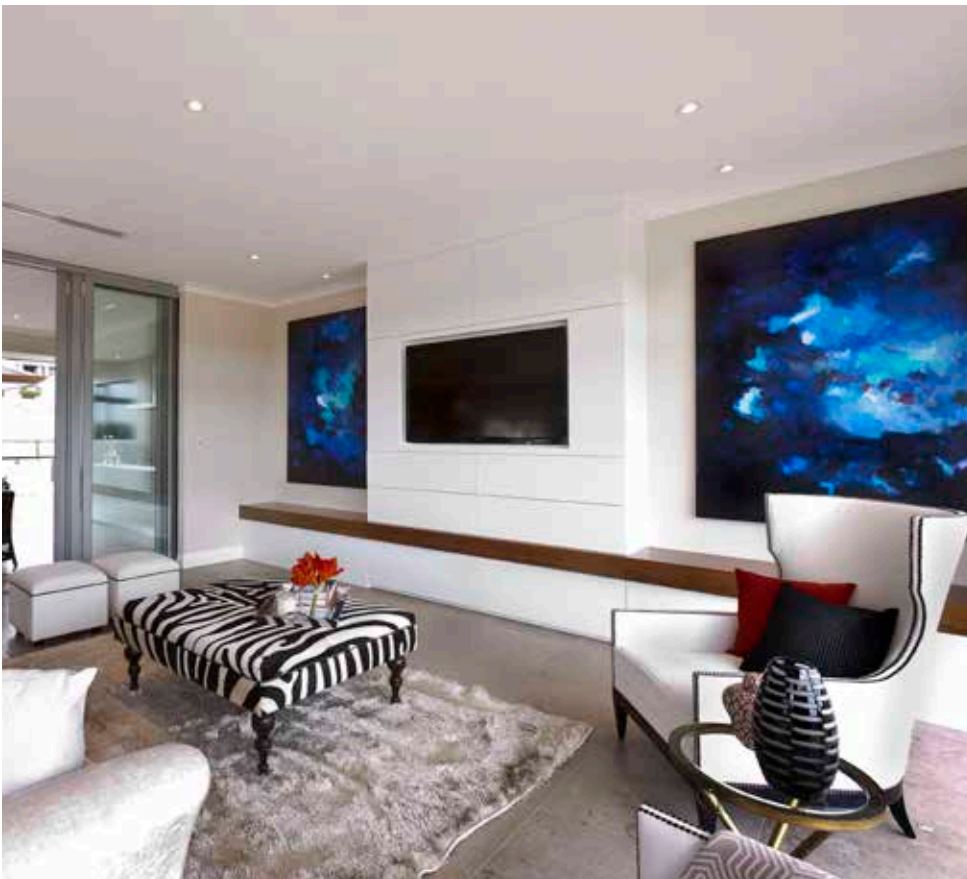
"In 1993 I was swimming and got taken out by a rip, getting tumbled by the big breakers off the Southern Ocean...I was in a full blown panic, at first, and then

I just had this thought that if I don't relax into this I will stay in this same sense of panic forever. So, I totally relaxed into it and it became a really beautiful, mystical, revelation-ary experience."

The artwork that has followed seems to have recaptured that mystical experience with a spiritual tranquility that continues to be a major theme in his art twenty years later. The eternally meditative mood present in Giles' work has seen his paintings grace the walls of corporate lobbies, hotels and private collections across the globe.



Top left: David Giles Cosmos 100 x 85cm
 Top Right: David Giles Approaching Storm 52 x 52cm
 Middle Right: David Giles Forest Lake 85 x 85cm
 Left: Oceanic 1 and Oceanic 2, each 180 x 120cm, installed in RiverStone Display Home



Giles now aims to give back to the art community that has supported him throughout his 20 year career via an educational endeavor called “The Freedom School of Painting”. Based at the David Giles Art Gallery in High St, Fremantle, The Freedom School works to empower individuals to follow their artistic passion and provides an outlet for artists to display their work.

The Freedom School is a place for artistic development where he mentors upwards of 32 students. Seven students from the program have so far gone on to become award-winning artists themselves.

A collection of David Giles work can be seen at the David Giles Art Gallery, 49b High St, Fremantle.

David also works on a commission basis for both residential and commercial projects.

www.davidgilesartistudios.com.au

Designer Colour

LIGHTING • SCULPTURES • INTERIOR DESIGN SERVICE
EXCLUSIVE ITALIAN FURNITURE • ACCESSORIES



www.sovereigninteriors.com.au

DELIVERY AUSTRALIA WIDE

Sovereign
INTERIORS






Spiral Cellars is the established expert in wine storage for the home, specialising in unique premium wine cellars and bespoke wine rooms which not only meet a highly functional need, but also look stunning.

After leading the way in luxurious large-scale wine storage for more than 30 years, with thousands of cellars built for discerning clients across the UK and Europe, Spiral Cellars are now available in Western Australia.

Aside from offering the ideal conditions, wine cellars and wine rooms in the home also enable the owner to grow their collection over many years with easy access to monitor the ageing process.

Whether an extension of the kitchen, a statement piece of the entrance hallway or the focal point of the entertaining space, when designed and finished to the highest standards wine storage can become a spectacular feature that sits at the centre of the interior design scheme.





Choosing the best wines to cellar

Many custom-designed homes are now incorporating built-in wine cellars. There are great pleasures to be had from starting your own wine cellar, but a few pitfalls to be wary of, too. The Wine Society's Adam Booth explains how to avoid the latter and see more of the former.

Wine improves with age. We've all heard it, but as anyone knows who has ever been disappointed by that special bottle that's been hiding under the bed, there is a little bit more to it than that. The choice of cellaring location is critical, but no more so than the wine itself

Winemakers know that the majority of what they produce (as much as 90% according to some market research) will be consumed within 24 hours of purchase, so they make wines accordingly. Put these wines in your cellar and you'll only be storing up disappointment. There are plenty of varieties too that are simply better suited to early drinking (think sauvignon blanc, for one very popular example). Lay them down for a period of years and all you'll do is see the vibrant flavours fade and die.

As a result, there is a sea of wines that should be enjoyed while young and fresh and only a relative handful that will reward our patience. But it is in that handful of wines that the real magic lies. Wines that are made to age – and that have the qualities to match these lofty ambitions – deliver a more complex and interesting experience. It is an experience that develops over time, with each bottle opened showcasing its qualities at that particular moment, and asking the wine lover to assess whether the wine has hit its peak.

The challenge is to sort out the sprinters from the marathon runners. When starting a brand new cellar, how can you know which wines have the staying power?

There are never any guarantees of course – variation from vintage to vintage, even from bottle to bottle, ensures that; but there is plenty you can do to turn your cellar into a treasure trove rather than a graveyard for lifeless wines that have long since given up the ghost.



Let The Wine Society help you start your cellar!

The blind tastings conducted by our tasting panel make us Australia's only truly independent wine selectors. Combine this with 67 years of experience – and a not-for-profit co-operative status that allows us to focus solely on sourcing the best wines for our members and you'll find no one better to guide you on the next stage of your wine journey.

Our friendly wine advisers are the best in the business and their brief is simple – to match the right wines with the right people. See what they can do for you and learn more about Wine Society membership by calling 1300 723 723 or visiting www.winesociety.com.au.

Ask about our Cellaring Six Pack, a wine plan specially designed to help you build your cellar!

the **wine**society 

Most wine lovers start by cellaring red wines and there is good sense in this. The tannins that are found (in varying quantities) in red wines are key factors in their potential longevity. Tannins, which in a young wine may be quite off-putting, provide the structure that allows the wine to age gracefully. As they break down, the wine gradually softens to reveal the complex and exciting secondary flavours that make aged wine so exciting. When selecting reds, look for wines with firm tannins as well as intense fruit flavours and good acidity.

White wines don't contain the tannins of their red counterparts, so acidity, which acts as a natural preservative, is much more important, keeping the wine in perfect condition as the secondary flavours begin to develop. Of course, you cannot simply pick the most acidic wines and hope for the best; the acidity must be in balance with the rest of the wine's flavour profile.

Balance should be at the forefront of your mind when choosing any wines for your cellar. Lay down an unbalanced wine for a few years and all you'll end up with is an older unbalanced wine. If anything, its youthful faults are likely to be exaggerated with age.

With these simple principles in mind, you can begin to make your selections with confidence. Big, bold red varieties that are naturally high in tannins, such as cabernet sauvignon and shiraz, are a great place to start and it's no surprise that these varieties dominate many Australian wine cellars. Some pinot noirs will age well too, but success varies, so while it is definitely a variety worth including in your collection, it is worth taking advice if this is an area on which you wish to focus.

A good cellar will be varied, with wines for all occasions, so it is important that whites are not neglected. Rieslings live long and exciting lives, gradually taking on rich, toasty and oily characters that beautifully complement the citrus notes of their youth. Chardonnay too has potential, but comes with the same caveat as pinot noir, so should be treated with caution. There is, though, another white wine that deserves space in every Australian wine cellar.

Hunter Valley semillon is one of Australia's great contributions to wine. Unique in style, no other Australian wine speaks as clearly of its place of origin – and it ages beautifully too. Naturally high in acidity, it is a wine with two distinct personalities. For the first couple of years after bottling, it is typically light and crisp and pale in the glass, with lemon and lime aromas and flavours. Then after a period of two or three years in hibernation, when it can appear dull and lifeless, it emerges with a whole new layer of complexity. Colour, texture and flavour all become deeper and richer, with honey and toasty notes enhancing the citrus palate.

It can be a stunning transformation and a wonderful demonstration of the joys of cellaring wine, as you follow the wine from frisky youth, through its sullen teenage years to fully-fledged adulthood. Just make sure you buy at least a few bottles of each wine you wish to cellar, so that you can follow its development and still have some to enjoy when you're satisfied that it has reached its peak.







Kitchens & Bathrooms



JAMEL
DESIGNER KITCHENS
Commercial | Residential | Custom



Designers & makers of fine cabinetry & furniture

Visit our new showroom at 64-68 Achievement Way, Wangara WA 6065
T +61 (08) 9302 33 11 E kitchens@jamel.com.au W www.jamel.com.au



JAMMEL
DESIGNER KITCHENS
Commercial | Residential | Custom



Designers & makers of fine cabinetry & furniture

Visit our new showroom at 64-68 Achievement Way, Wangara WA 6065
T +61 (08) 9302 33 11 E kitchens@jamel.com.au W www.jamel.com.au



So much more to choose from...

Glass Mosaics ■ Stone ■ Ceramic Tiles



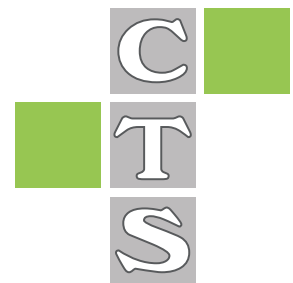
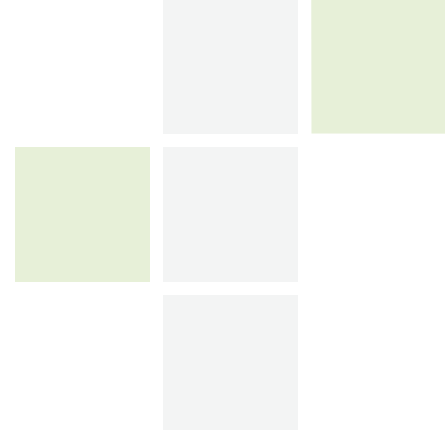
Archistone Grafite



Extró white, black



Crown Metropol



CERAMIC TILE SUPPLIES PTY. LTD.

NORTHERN SUBURBS
17 Buckingham Drive, Wangara
(08) 9409 9311

SOUTHERN SUBURBS
Unit 1, 70 Norma Road, Myaree
(08) 9317 4200

www.ctsupplies.com.au

10

Beautiful Baths



1



1. Oman Bath In Nero – Apaiser 2. Fiore Tub – Apaiser 3. Amelie – Roger Seller 4. Falper Scoop – Roger Seller 5. Custom Made Lunar Petal In Mother Of Pearl Finish – Apaiser 6. Maya Freestanding Bath – Dado Australia 7. Lunar In Rattan Finish – Apaiser 8. Haven Bath In Teak Finish – Apaiser 9. Custom Made Round Tub – Apaiser 10. Custom Made Haven Bath – Apaiser

Apaiser stone bathware -
the ultimate reclaimed marble
www.apaiser.com

DADO AUSTRALIA
www.dadoaustralia.com.au

Roger Seller
153 Broadway, Nedlands WA 6009
P 08 6389 1366
www.rogerseller.com.au

victoria ⊕ albert®

volcanic limestone baths

Victoria + Albert are at the forefront of freestanding bath design and innovation. We are 100% committed to pushing the boundaries of excellence through developing inspirational products that range from authentic period classics through to the latest contemporary models.

Every Victoria + Albert bath and basin is made from QUARRYCAST®, a naturally white composite material comprising of finely ground volcanic limestone and high-performance resins. Created at the dedicated Victoria + Albert factory in South Africa, each bath and basin is cast – making them 100% solid – and then hand finished by skilled craftsmen. Every model is packed with desirable properties including excellent scratch and stain resistance, high insulation and solid, easy to clean internal surfaces. Also thanks to the UV stability of the material, a popular option is to install product outside.



Amalfi

The **Amalfi** with its stunning good looks, a modern interpretation of a Victorian slipper bath, features softly contoured sides flowing gracefully to the floor. Its extended backrest provides full head support; essential for those long luxurious soaks.



Ravello

The stunning **Ravello** bath and matching **Ravello 60** basins combine classical elegance with contemporary sophistication. Bold straight lines combine effortlessly with gentle curves, reflecting the latest trend in interior design. The bath is 1,743mm long and the Ravello 60 basin 600mm, making it ideal for striking 'his and hers' countertop applications.



Napoli

Low slung and with a shallow height of 495mm, the asymmetric **Napoli** bath fuses cutting edge design with ergonomic appeal for an indulgent bathing experience. Entirely rimless, the Napoli's clean lines will make a contemporary statement in any bathroom.



Unit 2/37, Osborne Park, Western Australia 6017
t: 08 9446 3288 | f: 08 9244 2257
gro@myoffice.net.au | www.groagencies.com.au

victoria ⊕ albert®

volcanic limestone baths

Barcelona

passionate design




Premium Collection

 rich in
volcanic
limestone

Contemporary double-ended bath & basin

Deep, opulent and curvaceous - escape with the Barcelona collection, the latest in freestanding design from Victoria + Albert.

Like every Victoria + Albert...

- » Made from QUARRYCAST®
 - One piece casting of volcanic limestone and resin
 - Harder and more durable than acrylic
- » Easy clean high gloss finish
- » Exterior can be painted
- » 25 year guarantee

Original design. Superior craftsmanship. Enduring quality.



PERRIN & ROWE
MAYFAIR LONDON

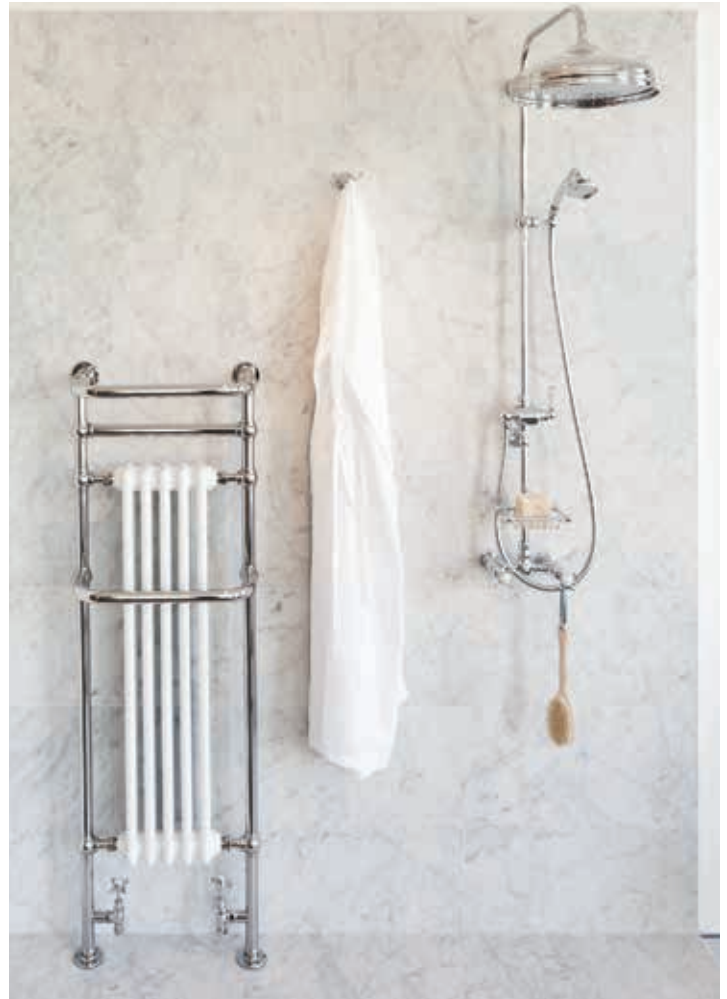
Hawthorn Hill

— THE —
**ENGLISH
TAPWARE**
— COMPANY —

The English Tapware Company Ltd is a boutique company dedicated to providing the world's best kitchen & bathroom tapware, fireclay sinks, bathroom accessories, towel warmers and bathroomware to builders, architects, interior designers and everyone who loves their home.

We offer in WA the luxurious Perrin & Rowe and Hawthorn Hill brands.

We offer peace of mind by guaranteeing the quality of our products and offering a high level of service before, during and after completion of the project. All our products are made to fit the local plumbing regulations and certified to comply with Australian Plumbing Standards. This is our assurance that we are selling a product which you can legally and happily install. We provide a minimum five year warranty against any manufacturing defects.



We are fastidious about which products we sell and if we would not have them in our own homes, we would not expect you to put them into yours.

Our close relationship with our suppliers enables us to provide a bespoke service to our customers. *Let us know what you need and we will do what we can to turn your dreams into reality.*

Visit NEW comprehensive displays in WA at:

Bathroom Boutique

323 Great Eastern Highway, Midland,
WA 6056, Tel (08) 9250 5099

Sea of White

205 Main Street, Osborne Park,
Perth, WA 6017, Tel (08) 9344 1500

www.englishtapware.com.au



westerncabinets

Since 1982 Western Cabinets have specialised in designing and manufacturing custom-designed high-quality cabinetry.

A family owned and operated business, Western Cabinets take great pride in their impeccable personal service, competitive pricing, and excellent standard of workmanship. To date, the company has been awarded with over 100 Housing Industry Awards and Furniture Industry of Australia Awards.

The Western Cabinets design team are one of the most creative and experienced design teams

in Australia. Able to meet you on-site, or at your home, the designers will discuss with you the important aspects of your project. From the designer's measurements taken, or from house plans supplied, Western Cabinets will work closely with you to come up with the best plan given your budget and any design constraints stipulated.

This beautiful kitchen, winner of the 2011 HIA Kitchen Design of the Year, for Renovated Kitchen Project of the Year, and Renovated Kitchen Project over \$50,000, adds sophisticated and style to this luxury apartment overlooking the city.

American Oak and Elm Burl door panelling contrast with Caesarstone Buttermilk benchtops, an Autumn Perle Metaline splashback, and the pre-existing travertine marble floor to create a visually stunning kitchen. Integrated into the design are state-of-the-art Siemens stainless steel appliances, including an aCool refrigerator, wine cooler, oven, steam oven, and dishwasher. A separate scullery, combined with innovative storage solutions make this kitchen clutter-free, leaving plenty of room for preparation and serving and, of course, admiring.





This stunning, contemporary kitchen was the result of a design brief for a family home needing to upgrade from the original small, closed in kitchen to a new, highly functional and open plan kitchen, with ample storage and bench space.

The design focussed on integrating the kitchen, dining area, living room, alfresco and garden, so that the kitchen area became the central hub of the home. A standout feature of the design is the island cabinet, complete with waterfall stone benchtop ends and decorative feature mirror panels.

Sufficient storage was also a major consideration for the design of this kitchen. The pantry is equipped with pullout drawers, cut out shelving, and LED sensor lights for visibility. An additional pantry with shallow shelving adds more storage space.

“ At Western Cabinets, we understand that you are busy, which is why we offer the complete kitchen solution from the initial design through to a beautifully finished kitchen. More than just cabinetry, our expert designers can guide and advise you on a beautiful and inspiring range of benchtops, splashbacks and top brand appliances. ”





This beautiful French traditional style kitchen was designed by Penka Kolevova and manufactured by Western Cabinets. The kitchen space was large and irregular in shape, with high 3m ceilings. The owners were seeking a living kitchen, more furniture than cabinetry, and a finish of exceptional craftsmanship.

Featuring prominently on the design is the empirical faux chimney and mantle, complete with acanthus leaf corbels. Sitting underneath, a large live upright stove, undermount and Qasair rangehood. The kitchen doors and panels are solid American Oak, and hand painted pistachio green. Imported porcelain cabinet handles and gold gilt finishing adds definition and class.

The other prominent feature of this kitchen is the contrasting solid Makore timber island bench with Crema Marfil marble benchtop. The suspended pot hanger is hand crafted, with curved cabinetry ends, fish tail pattern detail to the sides, LED lighting to the underside and decorative custom wrought iron hangers.





Working many years abroad on the beautiful island of Bali was the design inspiration for this sleek and modern kitchen and bathroom. Though large and grand in appearance, the kitchen is simple in form and understated.





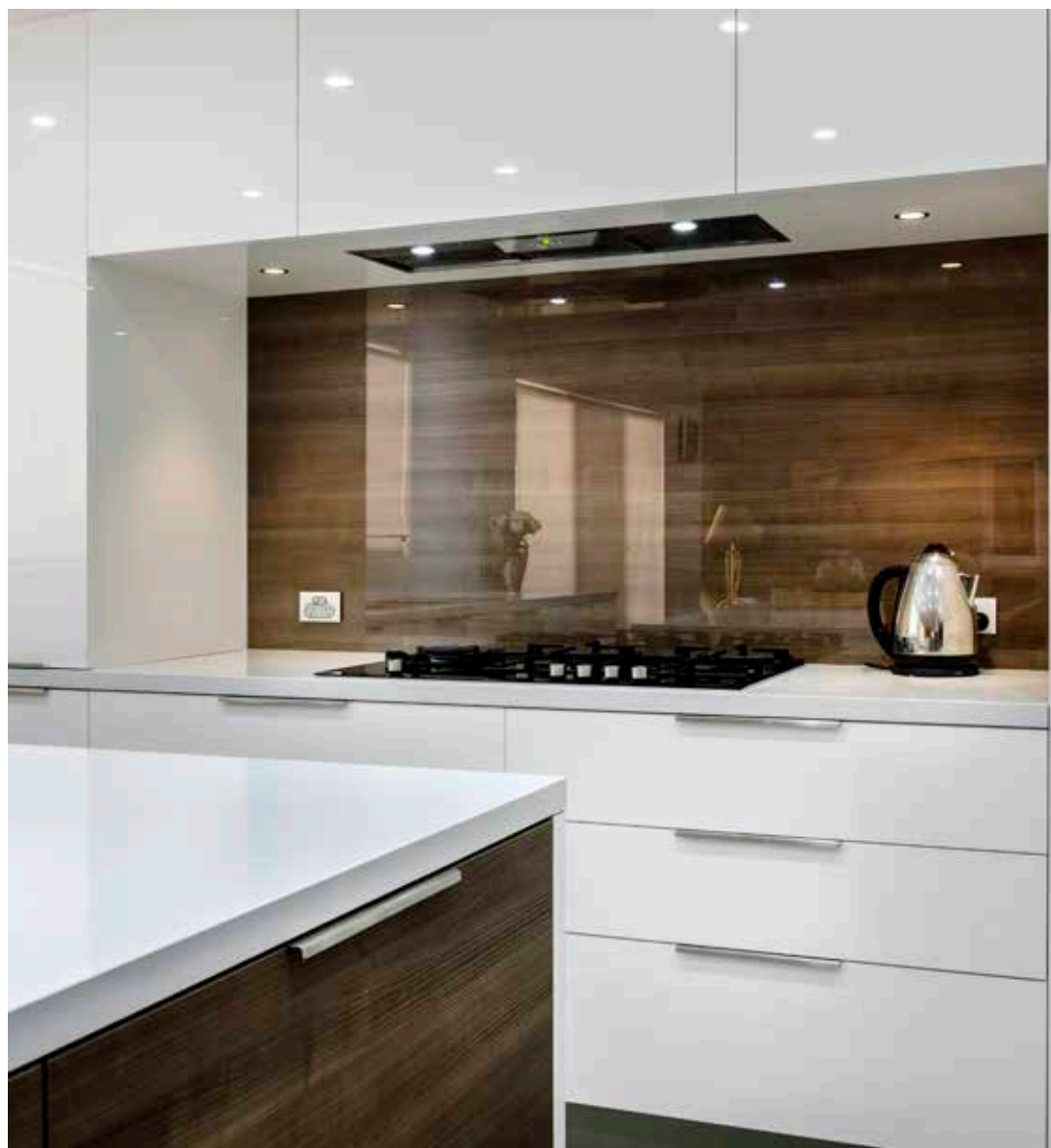
Engaged to revitalise tired and dated kitchen and bathroom areas, Kia Douglas and Western Cabinets have designed and built new and contemporary living spaces for the delighted owners.

Undoubtedly, the striking feature of this kitchen is the beautiful timber splashback. In stark contrast to the white panelling, the timber adds a focal point to the kitchen.

Twin Siemens ovens and an undermount Schweigen rangehood were chosen to create a clean and uncluttered appearance.

The kitchen is now highly functional and uncluttered, with ample bench space and storage. Innovative storage solutions, soft closing drawers and a hidden bifold appliance cabinet

The bathroom has a custom lit splashback which creates an abundance of light whilst also providing a beautiful feature. Suspended cabinetry along with a custom lift up mirror provide plenty of storage, whilst keeping the room light and uncluttered.







This multi-zoned European styled kitchen is both highly functional and beautiful. The kitchen's island benchtop forms the main cooking and serving zone, and is replete with hot plate, rangehood and storage. The rear bench allows landing space for cooking appliances and food preparation, and the sink area has a large inbuilt Hafele double waste bin, plus a fully integrated dishwasher, all hidden behind doors.

A large suspended custom built stainless steel Qasair rangehood creates a bold and sculptural statement. The island cabinetry appears suspended, mounted on a simple stainless steel leg and a low height drawer unit.

Navlam Grey Oak veneer in a sandblasted finish doors complement travertine marble floor tiles. Royal Oyster high gloss acrylic doors contrast with the textural, matt effect of the sand blasted veneer. Caesarstone White shimmer has been used to the underside of the benchtop. Pietra Grigia marble with honed finish forms a bold, natural and warm statement for the kitchen splashback.

HIA Kitchen and Bathroom Awards 2012

Excellence in Showroom Display

Best Kitchen in a Display Home of the Year

Best Kitchen in a Display Home \$500,001 +

Best Bathroom in a Display Home \$500,001 +

Renovated Kitchen Project \$30,001 - \$40,000

New Bathroom Project \$10,001 - \$20,000



The Western Cabinets showroom in Osborne Park showcases an inspiring collection of contemporary, elegant and cutting edge kitchens.

Across the showroom are many design consultation meeting spaces, where you can comfortably sit and work through your designs and plans with our consultants. There is also a fully equipped selection centre containing the latest door finishes, handles and benchtops. This also doubles up as a concept kitchen with appliances hidden behind beautiful, yet subtly patterned doors so that all is concealed and out of sight.

The showroom also displays our latest range in quality kitchen appliances and sinks, including Siemens appliances, Liebherr integrated fridge/freezers, the Fisher and Paykel Izona range, Fagor appliances, Elica rangehoods and Franke Sinks.

Having won the HIA Excellence in Showroom Display award for the last two years, the showroom offers excellent examples of Western Cabinets capabilities, and is a great starting point for inspiration and ideas for your project.



westerncabinets

Unit 1, 9 Sundercombe Street
Osborne Park WA 6017

P 9445 2677

F 9445 2497

westerncabinets.com.au

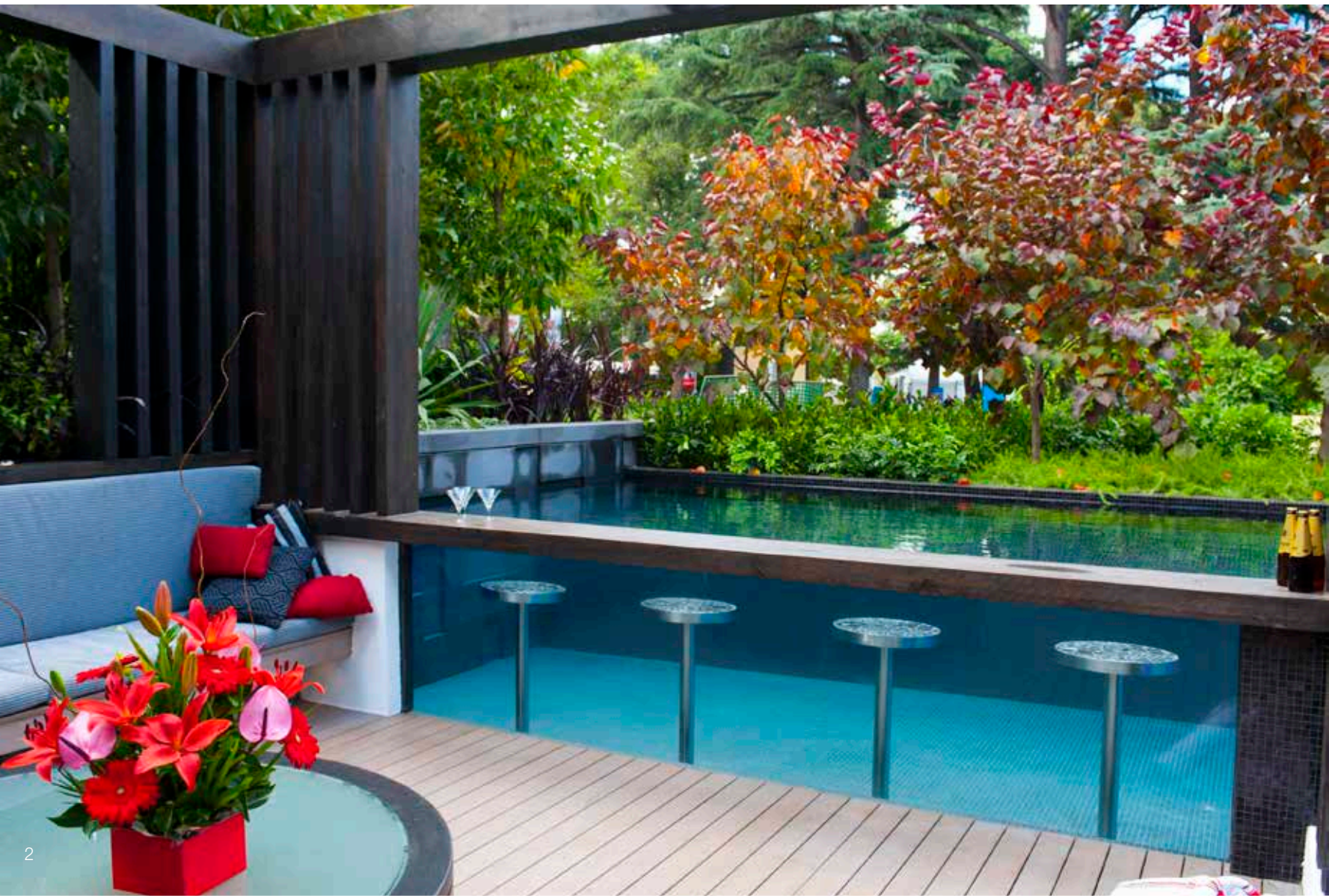


10

Award Winning Pools



1 SPASA award winning laptop from the multi-award winning - Aloha Pools, Victoria



2

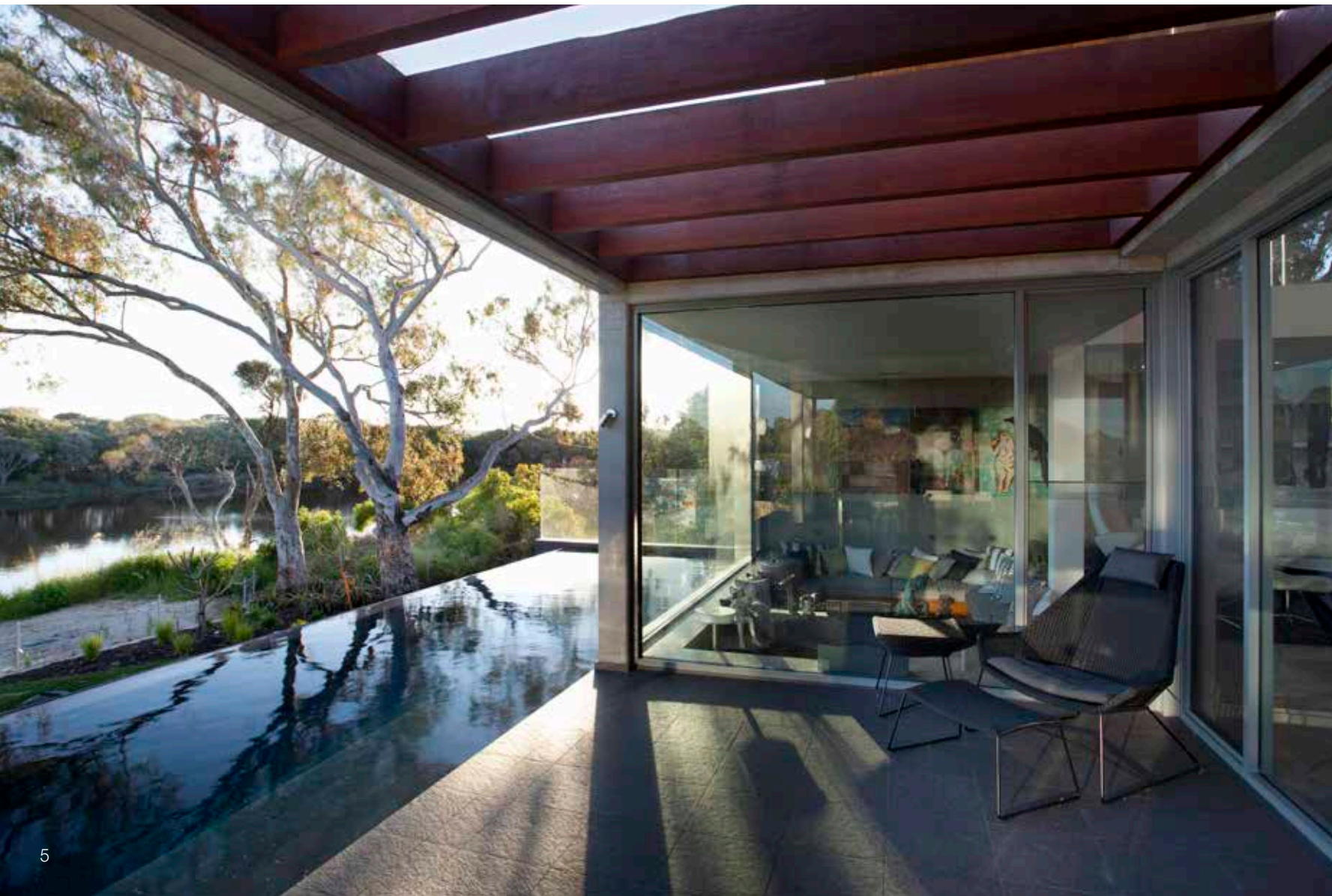


3



4

2. Chelsea Flower Show 2011 Gold Winner - TLC Pools Melbourne 3. Quality Dolphin Pools 4. Future Pools



5. Exclusive Pools 6. Aloha Pools, Victoria 7. Sunset Pools



8



9



10

8. Boardwalk Pool 9. Brighton Pools, Victoria 10. Aloha Pools, Victoria

Don't let a narrow block be an obstacle to luxury.



Pirone Builders excel at designing stunning, luxury homes suitable for small frontage lots.

Call us today on 08 9248 6399



PIRONE
BUILDERS
A REPUTATION BUILT ON QUALITY

Suite 1, Level 1, 8 Commerce Street Malaga, WA 6090
p. (+61 8) 9248 6399 m. 0417 919 715 f. (+61 8) 9248 5189
e. pironebuilders@iinet.net.au w. pironebuilders.com.au



THE ORIGINAL AND THE BEST



perfect for multi-storey homes



curved walls are possible



pouring concrete into blocks



completed structure before render



overlaid with natural rock

Thermacell is the smartest, safest, easiest and most cost-effective way to build a home.

Brought to Australia in 1980, and used in Europe since 1932, the Thermacell system is so easy to assemble that any handy person can build with it. So impressed was Geoff Bennett, he not only built his own home with Thermacell blocks, but also bought the company. Geoff's home in Somerville houses the head office and storage facility for the company.

"We are happy to show customers our home and introduce them to all facets of our system. We can refer them to contractors if they wish to have their buildings built for them, or we can oversee owner builders at their sites."

This level of personal service from Geoff and son David Bennett, combined with the reduced costs, ease of construction, environmental and costs saving factors, means you can't go past Thermacell when building. Thermacell is also virtually maintenance free, with an end cost comparable to brick veneer, but that's where the comparison ends. Thermacell is stronger, and has superior acoustic and insulation qualities. The walls don't expand or contract, meaning no expansion joints are necessary, and no cracks ever appear on the interior walls.

Thermacell by definition is a smart insulated concrete form, or ICF technology, engineered using polystyrene to form a strong fire-retardant formwork, used to cast concrete wall and floor structures. The blocks are dry-stacked without mortar, and have keyways top and bottom which push together like Lego blocks. The hollow blocks are then filled with concrete.

Customers choose Thermacell for the quality of our product and our personal service. We believe that we make the finest ICF systems in Australia, and our system stands alone for speed of build, accuracy and quality.

The simplicity of our system also makes it attractive to owner-builders who have little building experience, as well as professional builders who choose our system because it is so quick and easy to use. Our company website at www.thermacell.com.au for more information about Thermacell.





"We have a house that is structurally very sound and will save us even more money by not requiring much heating or cooling. It also means we are doing our bit for the environment. Building with Thermacell has been a very positive experience and we are more than happy to endorse the product."

Steve Ryan - owner builder

"A lot of people don't like to think outside the square, they're a little bit scared I think, set in their building practices, whereas, especially with the utility costs in this day and age, they keep rising, and you've got to look at avenues to save on power usage, heating and cooling - and you can't go wrong using this product".

Michael Pratt - Pratt Builders



THE ORIGINAL AND THE BEST

PO Box 447, Somerville VIC 3912

Geoff Bennett: 0414 664 500

David Bennett: 0412 577 431

p. 03 5977 7996

info@thermacell.com.au | thermacell.com.au

WIN

We want to hear about your building plans...

So much so we're giving away a stunning Victoria & Albert Bath & Basin set and Designer Tapware from the English Tapware Co **valued at \$7500.**

Just complete our 2 minute questionnaire at www.wacustomhomes.com.au to enter the draw.



*see website for terms and conditions

victoria ⊕ albert®

— THE —
ENGLISH
TAPWARE
— COMPANY —

WA CUSTOM HOMES

Advertisers index

ADVERTISER	Page
A. DI BUCCI & SON	65
ABSOLUTE BALLUSTRADES	133
ACADEMY HOME OFFICES	178
ARQ DESIGNS	18
ATRIUM HOMES	107
AUSTRAL	3
BRISTILE	2
CASSARI GROUP	28
CAVALIER BREMWORTH	15
CEDAR WEST	176
CERAMIC TILE SUPPLIES	208
CHELLINGWORTH	IFC
CICERELLO	170
CLASSY TIMBER FLOORING	82
CORE DEVELOPMENTS	23
DESIGN & CONSTRUCT	99
ENGLISH TAPWARE CO	216
GEOVITAL	172-173
GRANT ELEVATORS	6-7
GRO INDUSTRIES	212
JAMEL FURNITURE	182
JAMEL KITCHENS	204
JASON WINDOWS	4
KENSINGTON DESIGN	91
LIGHTINGALES	12
LUXUS HOMES	33, 238
MAUGHAN BUILDING CO	73
MERENDINO HOMES	20
MIDLAND BRICK	17, 29
MONDO EXCLUSIVE HOMES	164-165
MONIER PRIME	1
PAUL AUCKETT	192-193
PIRONE BUILDERS	41
PIRONE COMMERCIAL	233
PHYSIOLOGIA	140
QUAINE CONSTRUCTIONS	157, 166
REAL FLAME	11
RESIDENTIAL BUILDING BROKERS	25
RIVERSTONE CUSTOM HOMES	83
SCULPTURA	188, 240
SOVEREIGN INTERIORS	8, 197
SPADACCINI HOMES	57-64
SPIRAL CELLARS	198
TALLWOOD CONSTRUCTIONS	26, 149
THERMACELL	32, 234
VELIERIS	177
WESTERN CABINETS	218
WESTSTYLE	49
ZORZI BUILDERS	115
ZORZI SOUTH	141

'Built to Perfection'



Absolute Balustrade Systems proudly introduces SureSafe lockable aluminium plantation shutters exclusively to Western Australia



Absolute style
Absolute beauty
Absolute safety

CALL US FOR A FREE QUOTE ON 08 9302 1947 OR VISIT OUR SHOWROOM:
73 INSPIRATION DRIVE, WANGARA, WESTERN AUSTRALIA

WWW.ABSAUS.COM.AU



Absolute
Balustrades

· BALUSTRADING · POOL FENCING · FENCING & GATES · SHUTTERS · AWNINGS · PRIVACY SCREENS